



**STONE MARTIN
BUILDERS**



Sutherland

Home Plan

Starting at \$500,799

SQ FT: 3,172

Beds: 4

Baths: 3.5

Garage: 2 Standard



ELEVATION E



Elevation F

ABOUT THIS PLAN

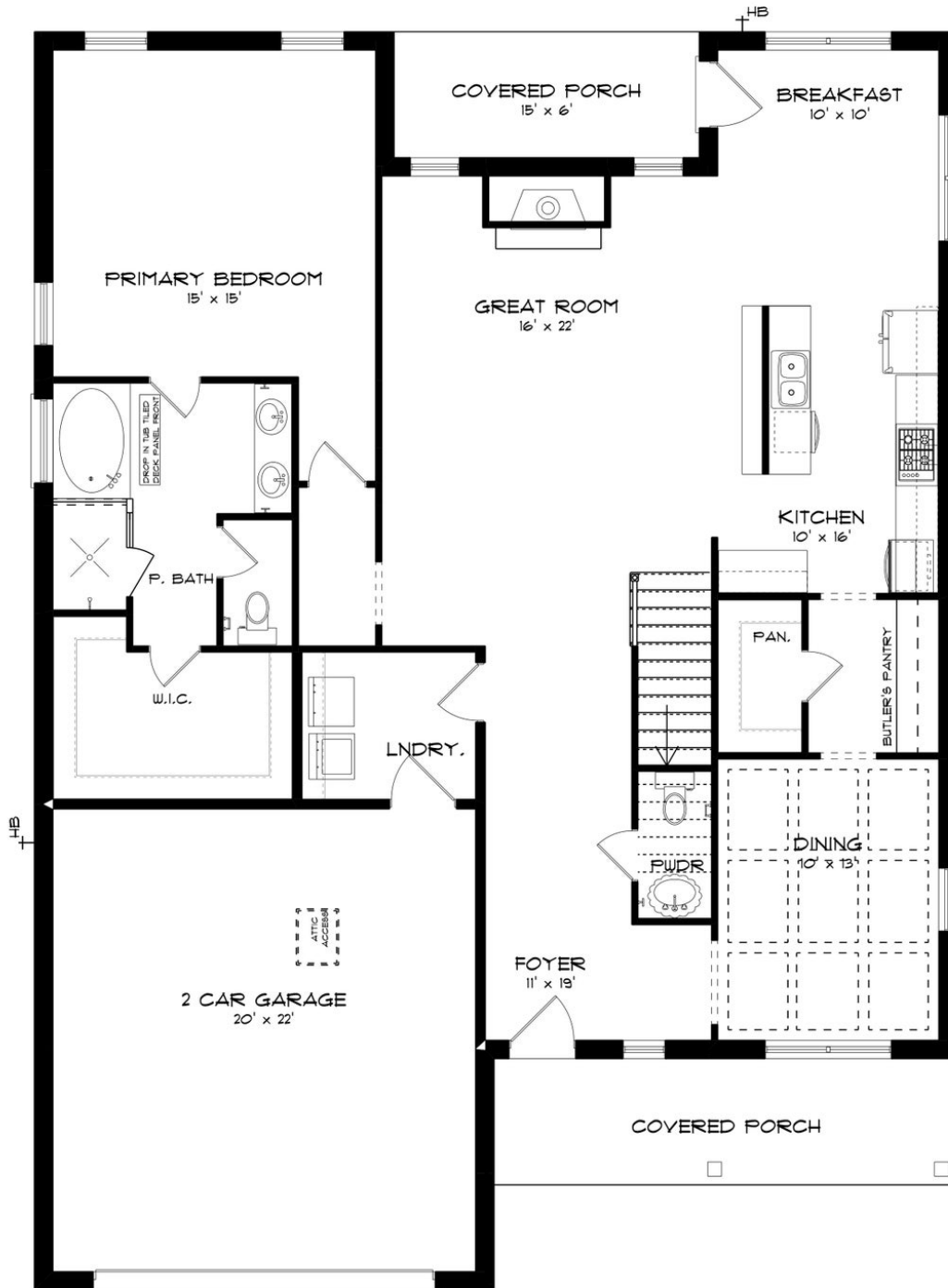
Unveil modern charm in the Sutherland floorplan, ideal for entertaining. Step into a spacious great room with a cozy fireplace, seamlessly connected to an open kitchen featuring granite countertops across the large island. The dining room, accessible through a large butler's pantry, sets the stage for elegant gatherings. Retreat to a private primary suite on the first floor, while upstairs offers a bright loft area and three large bedrooms. Embrace outdoor living with a covered front porch and back patio, completing this inviting abode.

...Read More Online

Prices, plans, dimensions, features, specifications, materials, and availability of homes or communities are subject to change without notice or obligation. Illustrations are artists depictions only and may differ from completed improvements. All prices subject to change without notice. Please contact your sales associate before writing an offer.

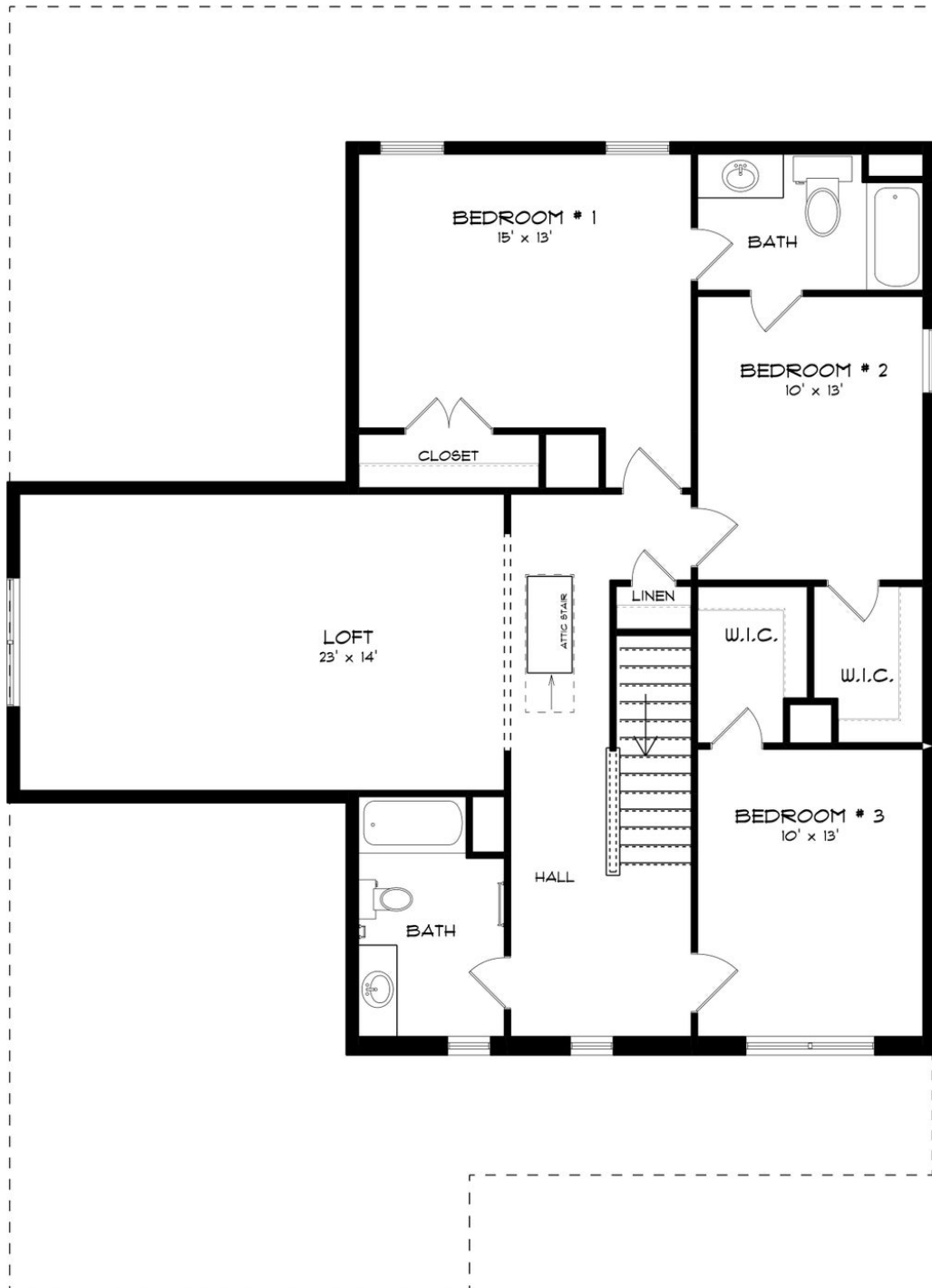


FIRST FLOOR (E)





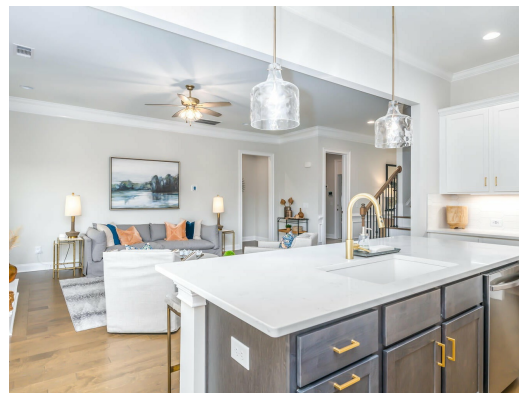
SECOND FLOOR (E)





**STONE MARTIN
BUILDERS**

PLAN GALLERY



Prices, plans, dimensions, features, specifications, materials, and availability of homes or communities are subject to change without notice or obligation. Illustrations are artists depictions only and may differ from completed improvements. All prices subject to change without notice. Please contact your sales associate before writing an offer.