



**STONE MARTIN  
BUILDERS**



**349 Pedric Drive  
Wetumpka, AL 36093  
The Haven At Fox Chase**

**Plan:** Rosewood  
**SQ FT:** 2,751  
**Beds:** 4  
**Baths:** 3.0  
**Garage:** 2

## ABOUT THIS HOUSE

The Rosewood is a well-planned floor plan that is budding with four bedrooms, plus a bonus room, and three full bathrooms. The foyer opens into an expansive kitchen with a great island, granite countertops, and a pantry. The spacious kitchen flows into its own convenient breakfast area opening to a great room perfect for entertaining and comfortable living. Off the great room, bedrooms two, three, and four reside with spacious closets and a great hall connecting the bedrooms to the bath with a double vanity. Secluded at the corner of the home, the primary suite is a dream, with a huge walk in closet, spacious bedroom, and a bathroom with a soaking tub and large tiled shower. The first floor is complete with a covered porch and a two -car garage. Up the stairs, a bonus room with a walk-in closet and a full bath, is ready to serve a wide variety of purposes for your family. This plan is sure to suit the needs of your growing family.

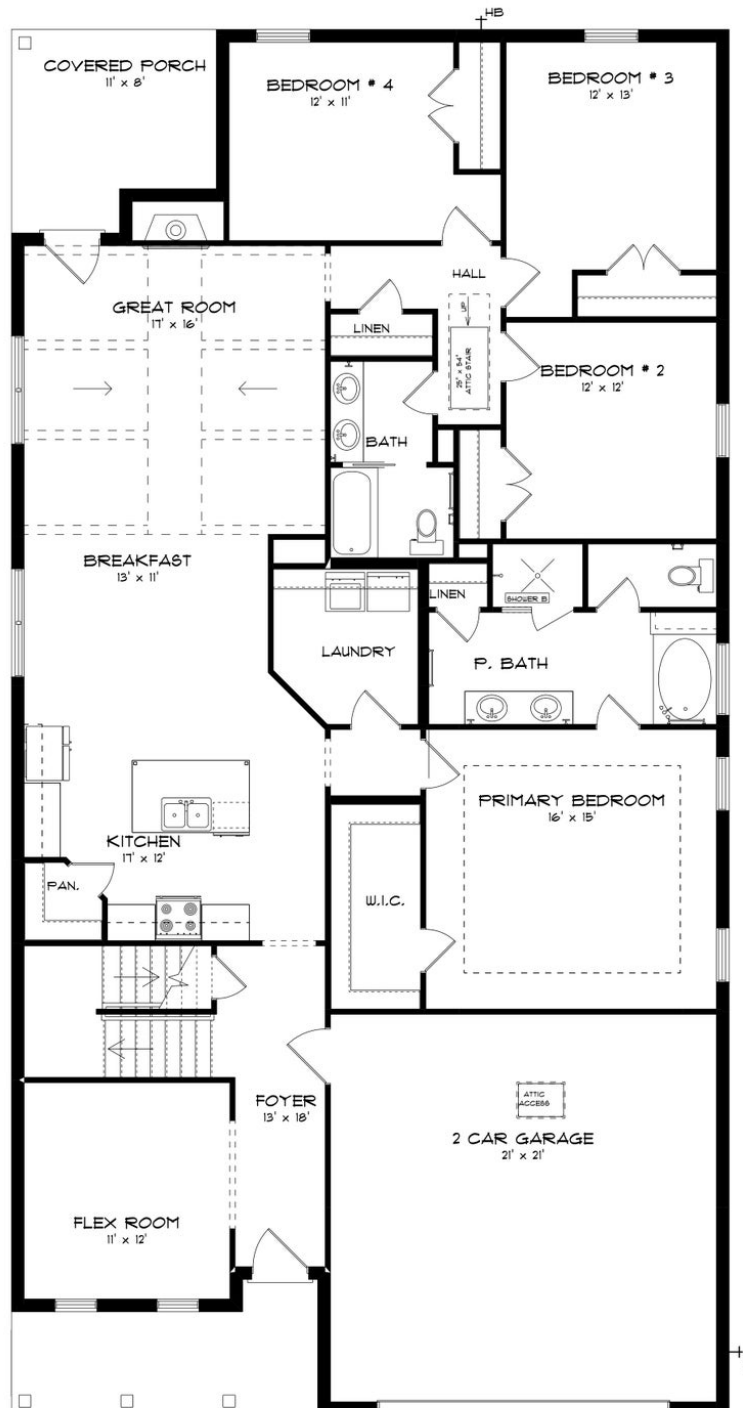
## ABOUT THE HAVEN AT FOX CHASE

Nestled in the sought-after Redland school district, this community is minutes away from both the elementary and middle school. The Haven at Fox Chase seamlessly blends southern charm with modern living, offering a haven of tranquility while remaining conveniently close to Montgomery, Prattville, Millbrook, and the local military bases—Gunter Air Force Base and Maxwell Air Force Base. Step into homes designed with southern charm, featuring spacious floorplans that provide the perfect canvas for your dream lifestyle. The thoughtful design details throughout each residence reflect Stone Martin Builders' commitment to high-quality construction, ensuring enduring value and comfort for years to come. Embrace the heart of your home in the gourmet kitchens, where functionality meets elegance. These culinary spaces are meticulously crafted to be both practical and stylish, ensuring they become the epicenter of your family's daily life. Experience the pinnacle of modern living with integrated smart home connectivity seamlessly woven into the fabric of your home. From climate control to security features, these smart technologies enhance your daily living experience, making your home both efficient and intelligent. Ready to experience the Stone Martin Builders difference? Schedule a visit to The Haven at Fox Chase and consult with our knowledgeable Sales Professionals. Explore available homes, envision your future, and embark on the journey to find your dream home in Wetumpka, AL.

Prices, plans, dimensions, features, specifications, materials, and availability of homes or communities are subject to change without notice or obligation. Illustrations are artists depictions only and may differ from completed improvements. All prices subject to change without notice. Please contact your sales associate before writing an offer.

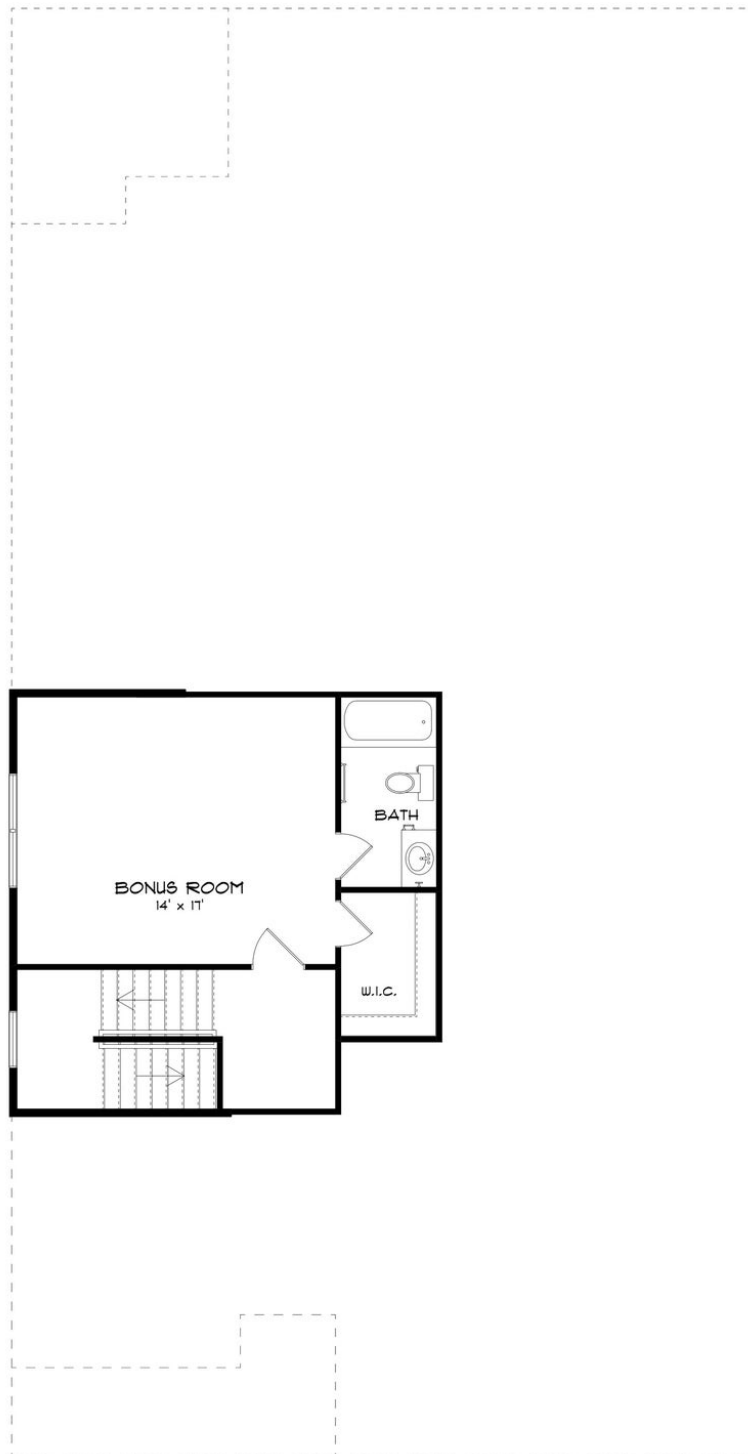


## FIRST FLOOR (F)





## SECOND FLOOR (F)



Prices, plans, dimensions, features, specifications, materials, and availability of homes or communities are subject to change without notice or obligation. Illustrations are artists depictions only and may differ from completed improvements. All prices subject to change without notice. Please contact your sales associate before writing an offer.