



**STONE MARTIN
BUILDERS**



**1021 Dozier Road
Wetumpka, AL 36093**

Fox Chase

Plan: Kinkade

SQ FT: 2,383

Beds: 3

Baths: 2.5

Garage: 2

ABOUT THIS HOUSE

Constant appeal and elegant definitions are found in the "Kinkade" plan for those calling for luxury and comfort. A vaulted beamed ceiling in the huge great room accentuates the space along with excellent finishes. The custom fireplace allows an even greater level of amenities while offering sheer enjoyment of an evening fire on those cooler nights. The huge kitchen's attention to custom cabinetry, upgraded stainless steel appliances, and granite counter tops, are sure to enhance cooking and eating experiences. Retire to the primary suite that exudes privacy and use of space and take advantage of the well thought out primary bath with every amenity for speedy starts for the day. From something as simple as a laundry room that does not abut any bedroom or the bonus room located upstairs along with a half bath that can be used as an office space, entertainment room, or even another bedroom; this plan provides plenty of comfort.

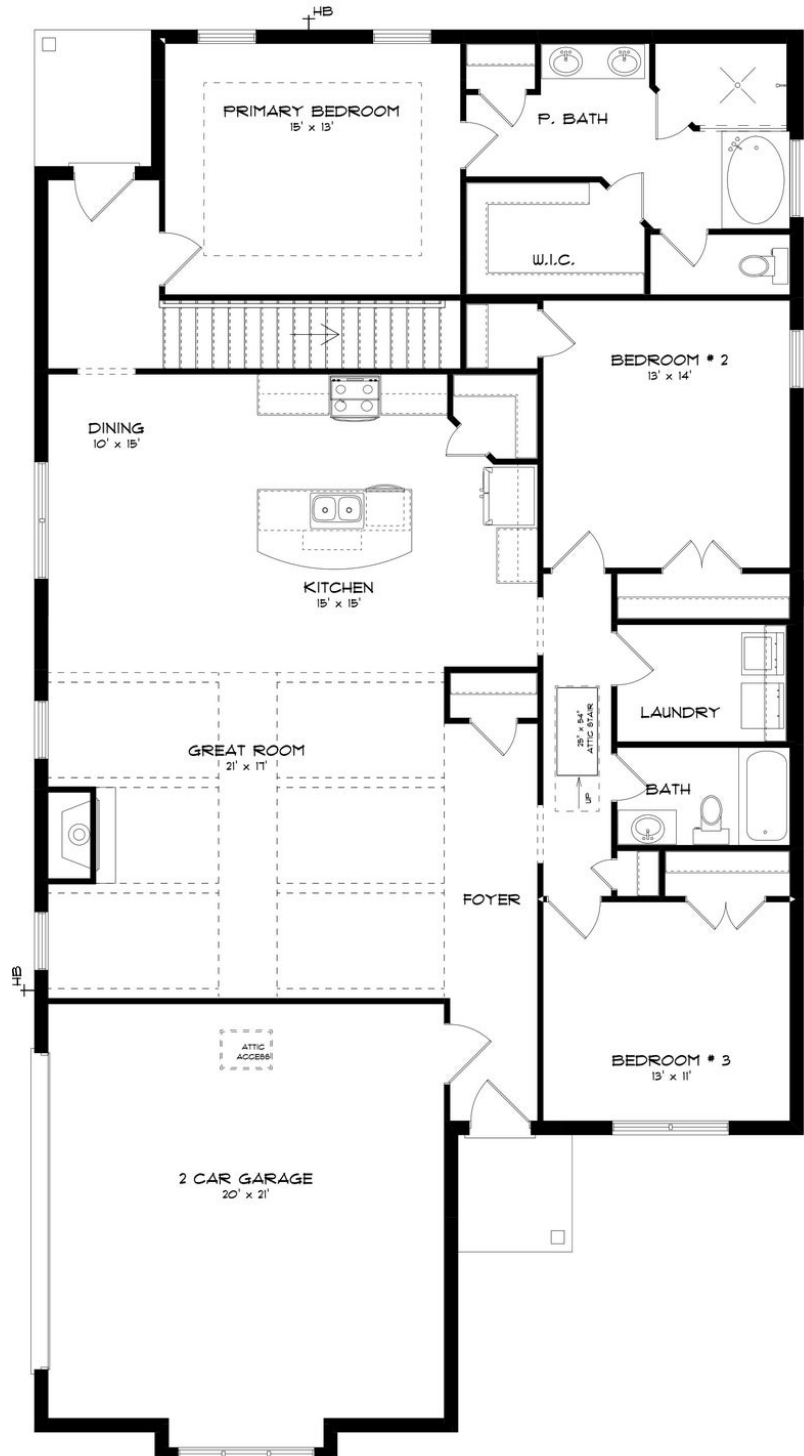
ABOUT FOX CHASE

Nestled in the sought-after Redland school district, this community is minutes away from both the elementary and middle school. Fox Chase seamlessly blends southern charm with modern living, offering a haven of tranquility while remaining conveniently close to Montgomery, Prattville, Millbrook, and the local military bases—Gunter Air Force Base and Maxwell Air Force Base. Step into homes designed with southern charm, featuring spacious floorplans that provide the perfect canvas for your dream lifestyle. Nestled within the sought-after Redland School District and mere minutes from local schools, Fox Chase seamlessly blends countryside tranquility with urban convenience. With Fox Chase, every detail is meticulously crafted to elevate your living experience. Explore our spacious floorplans, thoughtfully designed to maximize comfort and functionality. From gourmet kitchens to integrated smart home connectivity, our homes are crafted with the highest standards of quality and energy efficiency in mind. Ready to experience the Stone Martin Builders difference? Schedule a visit to Fox Chase and meet with our knowledgeable Sales Professionals. Explore available homes and embark on the journey to find your personal oasis in Wetumpka, AL.

Prices, plans, dimensions, features, specifications, materials, and availability of homes or communities are subject to change without notice or obligation. Illustrations are artists depictions only and may differ from completed improvements. All prices subject to change without notice. Please contact your sales associate before writing an offer.



FIRST FLOOR (F)





SECOND FLOOR (F)

