



**STONE MARTIN
BUILDERS**



**967 Alston Drive
Wetumpka, AL 36093
Coventry**

\$562,889

Plan: Summerville

SQ FT: 4,275

Beds: 5

Baths: 3.5

Garage: 2

ABOUT THIS HOUSE

Experience the "Summerville" floorplan – a harmonious blend of space, elegance, and comfort that exudes old-world charm while boasting high-end amenities. Step stunning foyer that is open to the dining area with a coffered ceiling, and into the great room. As you explore further, you'll be captivated by the impressive staircase at the rear of the home. With ten-foot ceilings enhancing the downstairs space, you'll find a gourmet kitchen complete with a butler's pantry and an oversized pantry, along with the perfect granite island for hosting family and friends. The laundry room is not just practical but also spacious enough for a freezer or any cleaning apparatus you might need. The grand primary suite is a sanctuary unto itself, leaving no detail overlooked. It features a cozy sitting area, a massive closet, and a luxurious primary bath with double granite vanities, a separate full tile shower with a heavy glass door, and a soaking tub. Upstairs, there's room for everyone, with three generously sized bedrooms and a bonus/media room that offers versatile living options. And when it comes to closet space, rest assured it's unsurpassed, ready to accommodate all your storage needs. The "Summerville" floorplan is truly a cut above, providing you with a multitude of living possibilities in a space designed for the ultimate in comfort and style. Welcome home!

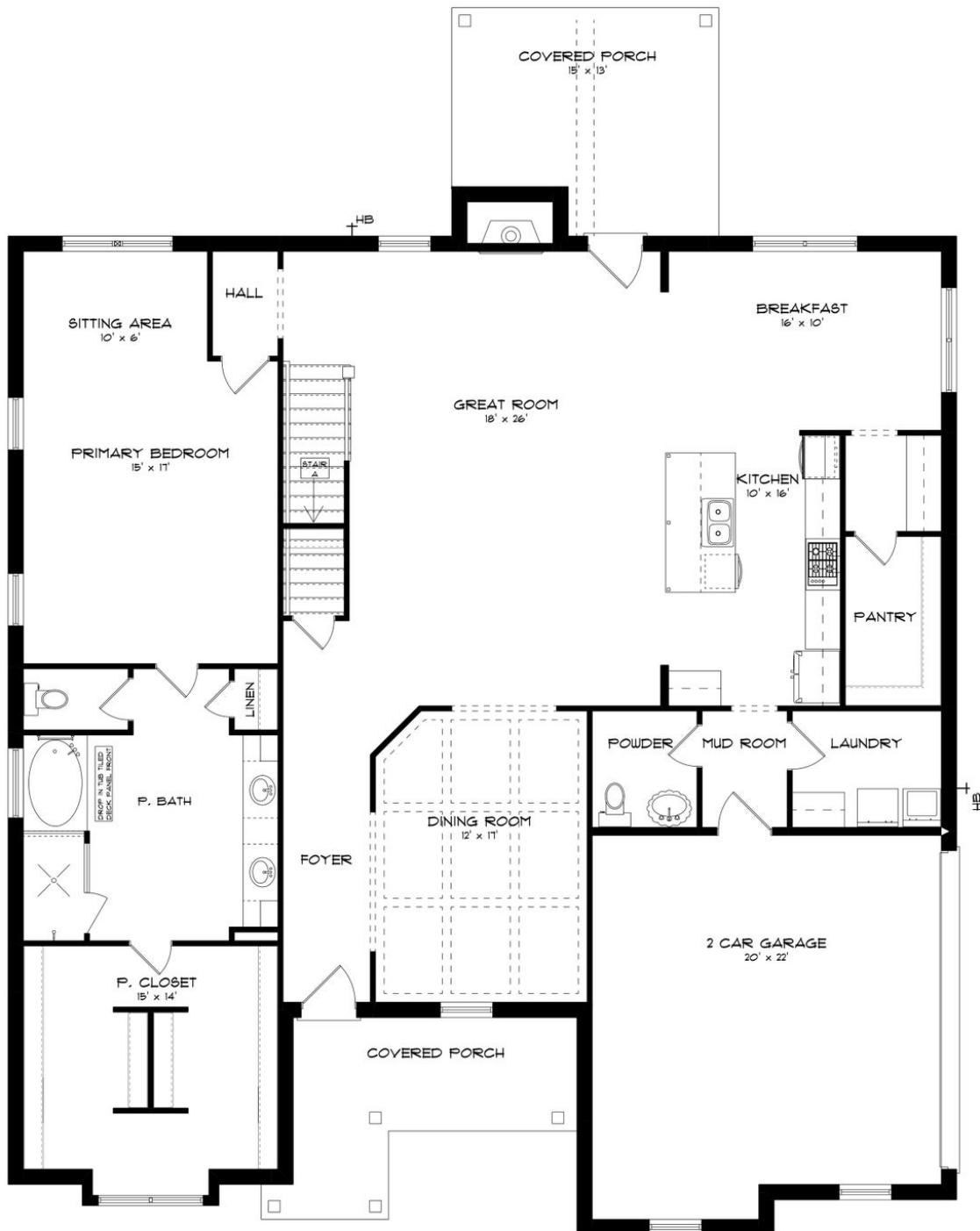
ABOUT COVENTRY

Welcome to Coventry, Stone Martin Builders' premier subdivision in the scenic Wetumpka, Alabama. Nestled in the highly sought-after Redland School District, this vibrant community offers a tranquil country setting with easy access to nearby amenities and major military bases. Discover the epitome of modern living at Coventry, where spacious floorplans and thoughtful design details await. Each home boasts gourmet kitchens equipped with top-of-the-line appliances, integrated smart home connectivity, and high-quality construction for lasting durability. Experience the essence of community living with our included amenities, including a sparkling community pool, inviting resident clubhouse, pickleball court, and a playground for endless fun. Connect with neighbors and forge lasting friendships in this welcoming environment. With its convenient location near Montgomery, Prattville, and local military bases, Coventry offers the perfect blend of peaceful countryside living and urban convenience. Ready to experience the Stone Martin Builders difference? Schedule a visit to Coventry and meet with our knowledgeable Sales Professionals. Explore available homes and embark on the journey to find your personal oasis in Wetumpka, AL.

Prices, plans, dimensions, features, specifications, materials, and availability of homes or communities are subject to change without notice or obligation. Illustrations are artists depictions only and may differ from completed improvements. All prices subject to change without notice. Please contact your sales associate before writing an offer.

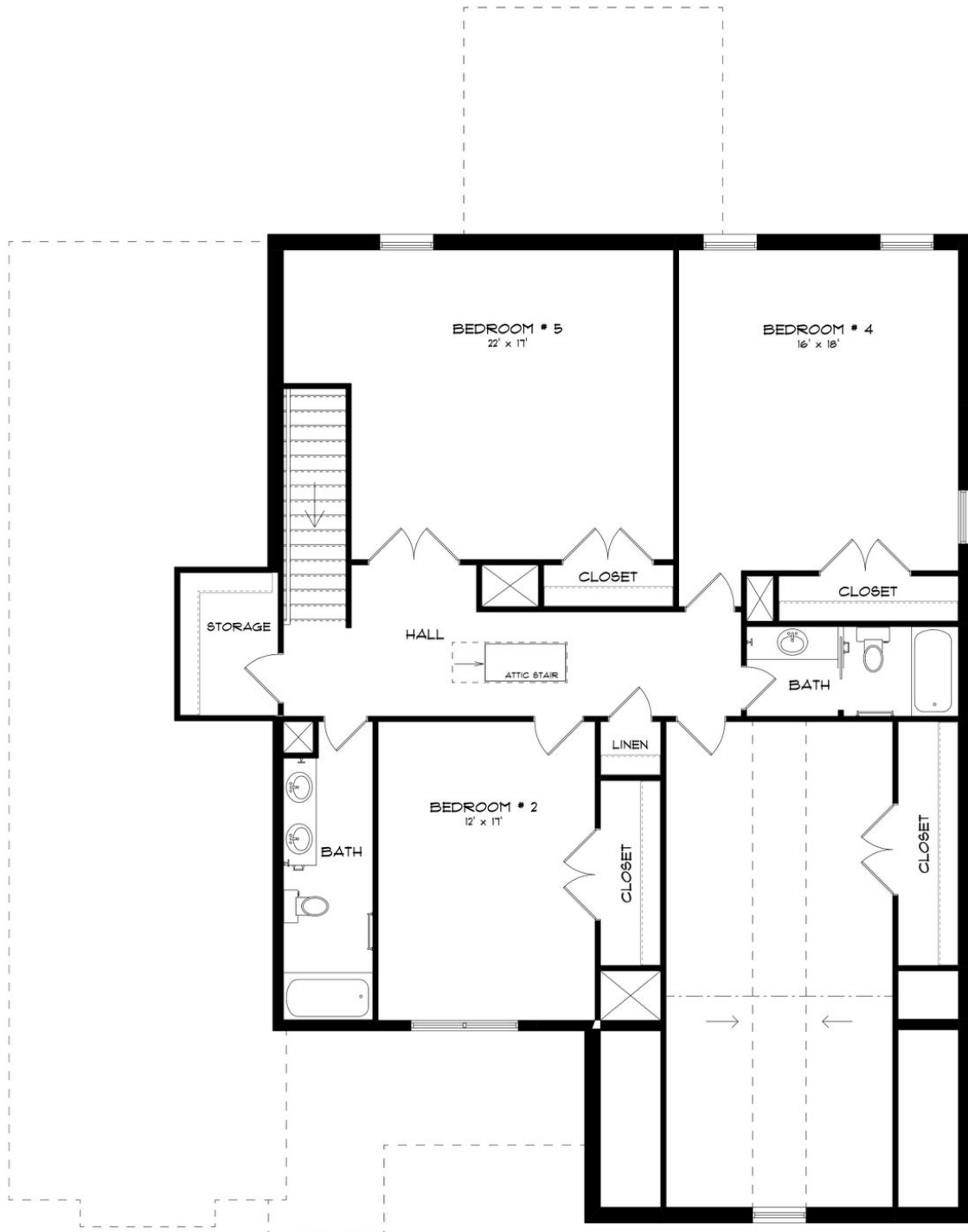


FIRST FLOOR (J)





SECOND FLOOR (J)



Prices, plans, dimensions, features, specifications, materials, and availability of homes or communities are subject to change without notice or obligation. Illustrations are artists depictions only and may differ from completed improvements. All prices subject to change without notice. Please contact your sales associate before writing an offer.