



**STONE MARTIN
BUILDERS**



**107 Rodney Lane
Wetumpka, AL 36093**

Coventry

\$464,024

Plan: Morningside

SQ FT: 2,960

Beds: 4

Baths: 3.0

Garage: 2

ABOUT THIS HOUSE

The Morningside pairs expert space planning with a long list of desirables, and the result is a perfect plan for nearly any phase of life. The welcoming feel starts on the covered front porch and carries through the long foyer entryway that leads you into a vast great room. The corner fireplace will immediately catch your eye, but the sprawling hardwoods and wall of windows will secure your admiration for this space. Off to one side you'll find a large kitchen with a center island accompanied by a wine rack and open book case, great working triangle, and large pantry. You enter the flex room from the back of the kitchen that would serve perfectly as a dining room or study, depending on your family's needs. The primary suite occupies one side of the main level and has a lot to offer including an adjoining sitting room, flawless primary bath, and spacious walk in closet. The three additional bedrooms and two full bathrooms are found off of the main entryway and each have a large walk-in closet plus a linen closet in the hall. Hidden gems of this home are a mudroom adjacent to the laundry room, entered from the side-entry garage or foyer, and a LARGE covered patio with exterior fireplace at the rear.

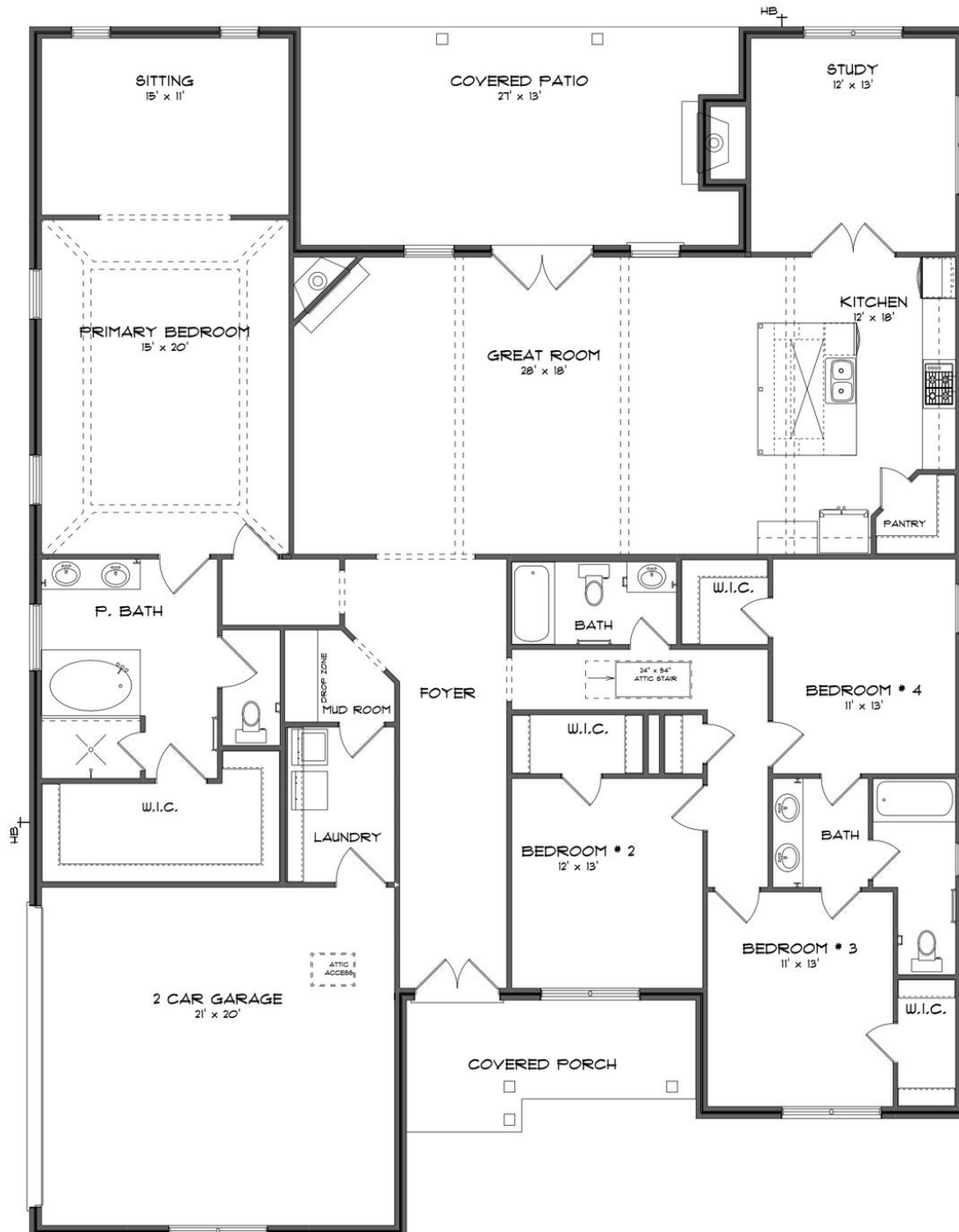
ABOUT COVENTRY

Stone Martin Builders wants to help you get into the game of homeownership! Ask a Sales Professional about our special incentives and new home savings! Welcome to Coventry, Stone Martin Builders' premier subdivision in the scenic Wetumpka, Alabama. Nestled in the highly sought-after Redland School District, this vibrant community offers a tranquil country setting with easy access to nearby amenities and major military bases. Discover the epitome of modern living at Coventry, where spacious floorplans and thoughtful design details await. Each home boasts gourmet kitchens equipped with top-of-the-line appliances, integrated smart home connectivity, and high-quality construction for lasting durability. Experience the essence of community living with our included amenities, including a sparkling community pool, inviting resident clubhouse, pickleball court, and a playground for endless fun. Connect with neighbors and forge lasting friendships in this welcoming environment. With its convenient location near Montgomery, Prattville, and local military bases, Coventry offers the perfect blend of peaceful countryside living and urban convenience. Ready to experience the Stone Martin Builders difference? Schedule a visit to Coventry and meet with our knowledgeable Sales Professionals. Explore available homes and embark on the journey to find your personal oasis in Wetumpka, AL.

Prices, plans, dimensions, features, specifications, materials, and availability of homes or communities are subject to change without notice or obligation. Illustrations are artists depictions only and may differ from completed improvements. All prices subject to change without notice. Please contact your sales associate before writing an offer.



ELEVATION H



Prices, plans, dimensions, features, specifications, materials, and availability of homes or communities are subject to change without notice or obligation. Illustrations are artists depictions only and may differ from completed improvements. All prices subject to change without notice. Please contact your sales associate before writing an offer.