



**STONE MARTIN  
BUILDERS**



**309 Currituck Drive**

**Troy, AL 36079**

**Walter's Branch**

**\$463,909**

**Plan: Huddlestone II**

**SQ FT: 3,054**

**Beds: 4**

**Baths: 4.5**

**Garage: 3**

## ABOUT THIS HOUSE

With 4 bedrooms and 4.5 baths huddled around the spectacular great room, "Huddlestone II" offers a great plan with an exceptional use of space. The large great room area with vaulted ceilings is complete with a fireplace and opens into the spacious kitchen finished with granite countertops and a large island. Retreat to the entry or rear covered patios that offer a surplus amount of shade and a serene setting on any given day. Added to the primary bedroom and bath, the 3 additional bedrooms provide plenty of closet space and two bathrooms. This highly desirable plan is perfect for numerous ways of life, but especially for multi-generational families. The plan is rounded out exquisitely with a 3-car garage. The 2nd floor is home to a large bonus room featuring a full bath and walk-in-closet.

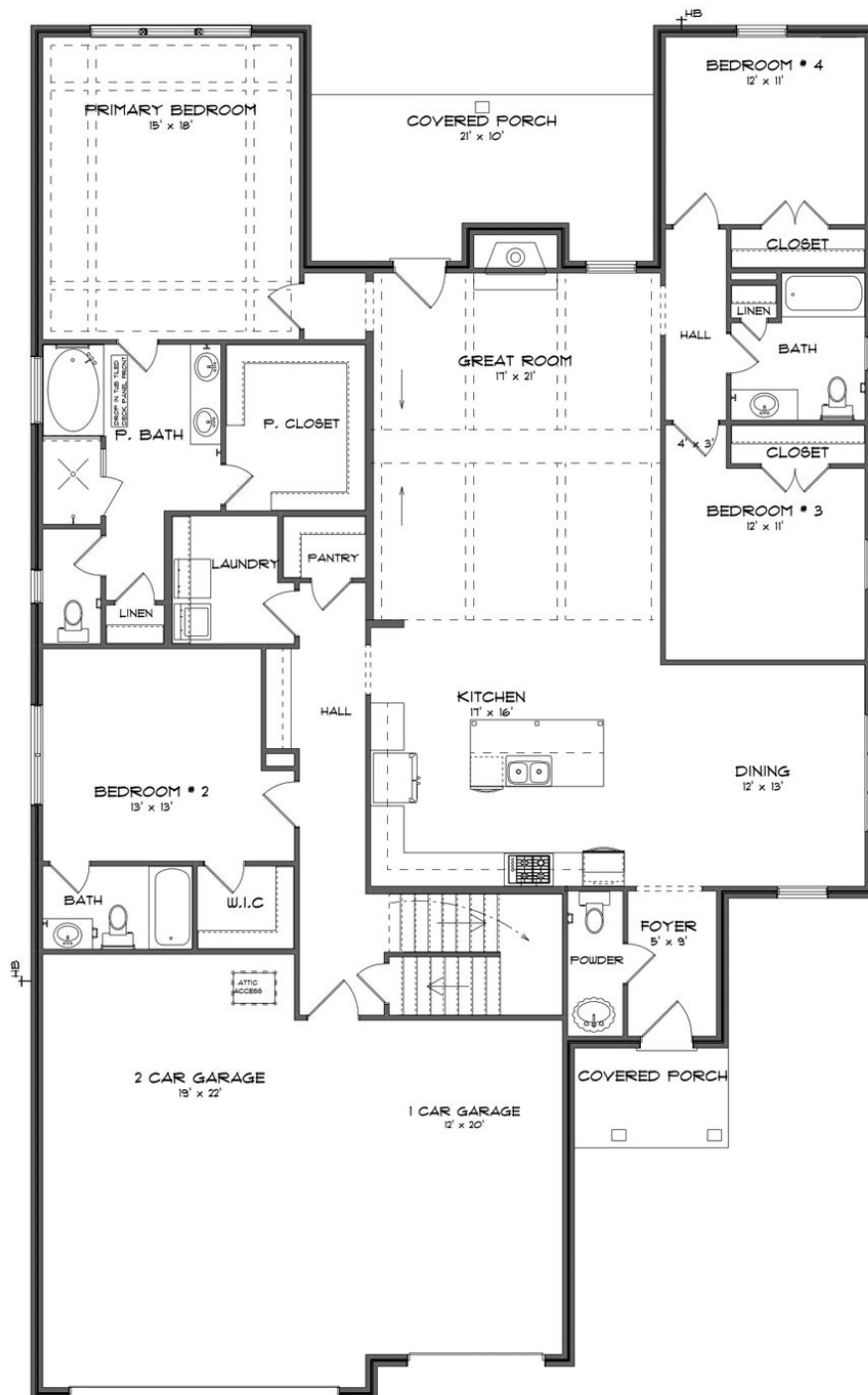
## ABOUT WALTER'S BRANCH

Discover the ideal blend of southern charm and modern living at Walter's Branch, a new home community in Troy, AL. Nestled off Trojan Parkway, this enclave offers the perfect balance between the heart of the city and serene living. Just minutes from shopping, dining, entertainment, and Troy University—Home of the Troy Trojans—Walter's Branch provides convenience without compromising tranquility. Explore homes with spacious floorplans that seamlessly marry functionality and comfort, embodying Stone Martin Builders' commitment to thoughtful design. Step into the heart of your home—the gourmet kitchens, where culinary aspirations meet stylish design, creating spaces that cater to every lifestyle. Embrace the future with integrated smart home connectivity, seamlessly woven into the fabric of your home. From climate control to advanced security features, these modern technologies enhance your daily living experience, ensuring your home is both efficient and intelligent. Walter's Branch not only offers the comfort of city living but also easy access to the Troy SportsPlex and nature trails. Ready to experience the Stone Martin Builders difference? Schedule a visit to Walter's Branch and consult with our knowledgeable Sales Professionals. Explore available homes, envision your future, and embark on the journey to find your dream home in Troy, AL.

Prices, plans, dimensions, features, specifications, materials, and availability of homes or communities are subject to change without notice or obligation. Illustrations are artists depictions only and may differ from completed improvements. All prices subject to change without notice. Please contact your sales associate before writing an offer.



# FIRST FLOOR (F)



Prices, plans, dimensions, features, specifications, materials, and availability of homes or communities are subject to change without notice or obligation. Illustrations are artists depictions only and may differ from completed improvements. All prices subject to change without notice. Please contact your sales associate before writing an offer.



## SECOND FLOOR (F)

