



**STONE MARTIN  
BUILDERS**



**457 Lantana Court  
Rehobeth, AL 36301**

**Chase Ridge**

**\$294,999**

**Plan:** Thrive Kirkland

**SQ FT:** 2,235

**Beds:** 3

**Baths:** 2.5

**Garage:** 2

## ABOUT THIS HOUSE

The "Kirkland" offers 2,325 square feet with 3 bedrooms and 2.5 bathrooms. This unique floorplan showcases the perks of open-concept living. The front of the house boasts a large great room that opens to the dining room. The dining room flows seamlessly into the kitchen, which is complete with an elegant bar top and ample counterspace. The "Kirkland" provides a true upstairs retreat with all bedrooms on this level. The primary retreat is tucked on one side for maximum privacy and includes a separate bathroom with a double vanity and large walk-in closet. Along with the other 2 bedrooms, the upstairs space enters into a loft area that is guaranteed to fit any need you may have for this space.

## ABOUT CHASE RIDGE

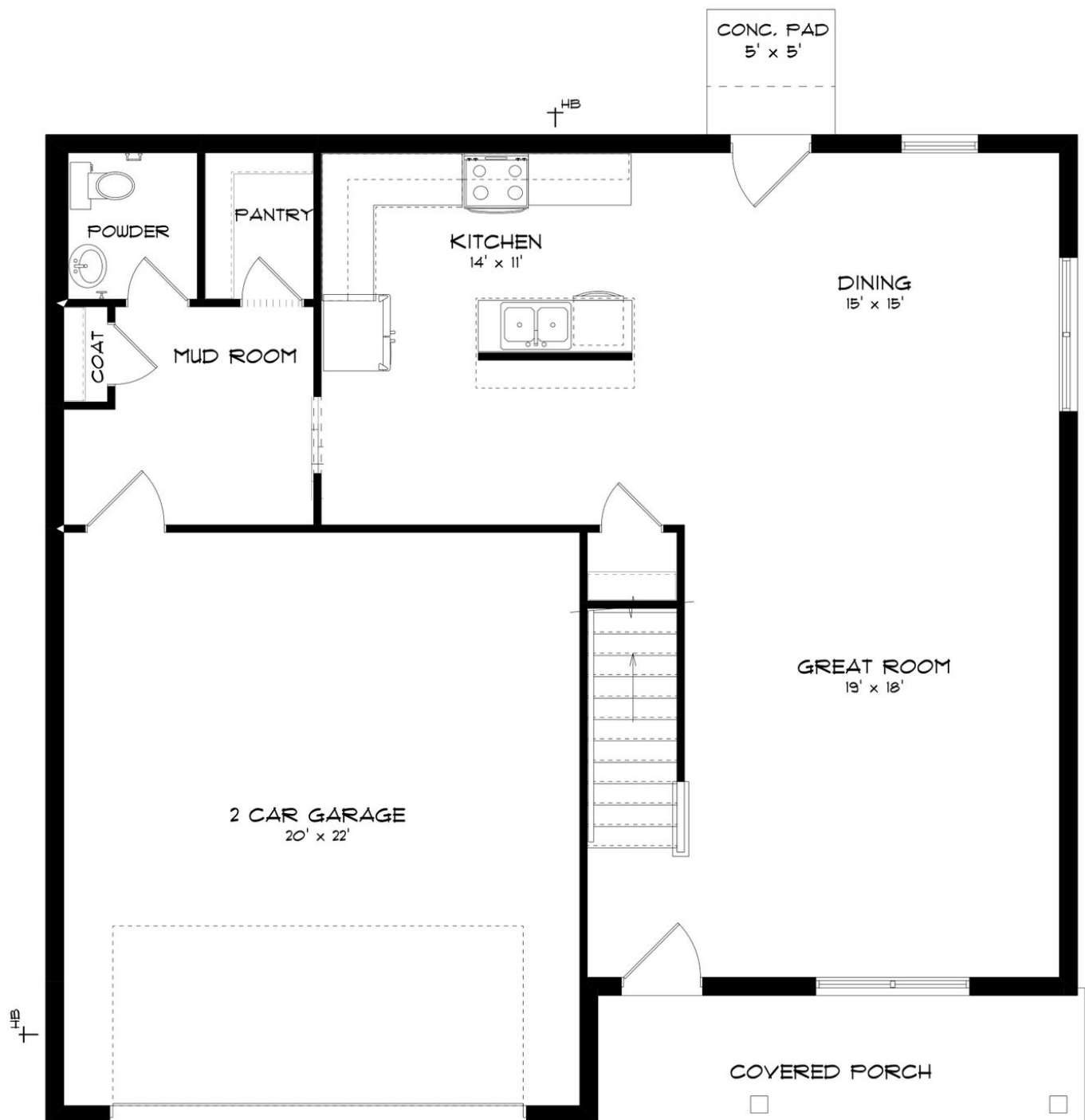
Stone Martin Builders wants to help you Splash into Savings on a new home! Ask a Sales Professional about our special incentives and new home savings! Welcome to Chase Ridge, where modern convenience meets timeless charm in the desirable Rehobeth School District. Situated south of Dothan, this vibrant community offers the best of both worlds—tranquil surroundings and easy access to city amenities. At Chase Ridge, Stone Martin Builders' commitment to quality and longevity shines through. Our meticulously crafted homes feature spacious floorplans, thoughtful design details, and gourmet kitchens equipped with the latest appliances. Integrated smart home connectivity and high-quality construction ensure a seamless living experience tailored to modern lifestyles. Join our welcoming neighborhood where neighbors become friends, and a strong sense of community thrives. Ready to experience the Stone Martin Builders difference? Schedule a visit to Chase Ridge and consult with our knowledgeable Sales Professionals. Explore available homes, envision your future, and embark on the journey to find your dream home in Dothan, AL.

Prices, plans, dimensions, features, specifications, materials, and availability of homes or communities are subject to change without notice or obligation. Illustrations are artists depictions only and may differ from completed improvements. All prices subject to change without notice. Please contact your sales associate before writing an offer.



**STONE MARTIN  
BUILDERS**

## FIRST FLOOR (A)

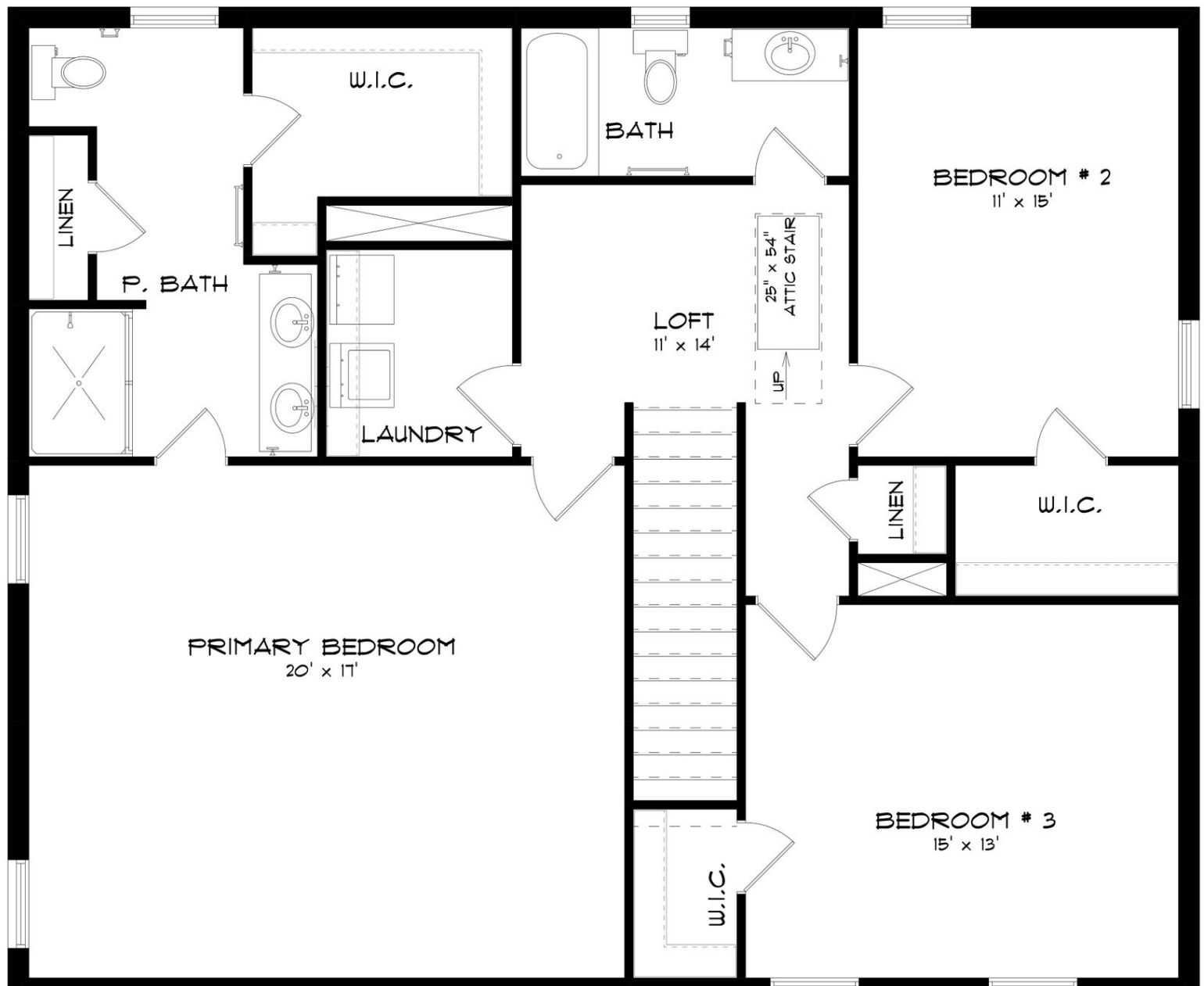


Prices, plans, dimensions, features, specifications, materials, and availability of homes or communities are subject to change without notice or obligation. Illustrations are artists depictions only and may differ from completed improvements. All prices subject to change without notice. Please contact your sales associate before writing an offer.



**STONE MARTIN  
BUILDERS**

## SECOND FLOOR (A)



Prices, plans, dimensions, features, specifications, materials, and availability of homes or communities are subject to change without notice or obligation. Illustrations are artists depictions only and may differ from completed improvements. All prices subject to change without notice. Please contact your sales associate before writing an offer.