



**STONE MARTIN
BUILDERS**



**910 Pearl Drive
Prattville, AL 36066
McClain Landing**

\$355,001

Plan: Hampton

SQ FT: 1,924

Beds: 3

Baths: 2.0

Garage: 2

ABOUT THIS HOUSE

Constant appeal and elegant definitions are found in the "Hampton" for those calling for luxury and comfort. Vaulted beamed ceiling in huge great room suggests space, and excellence in finishes. Custom fireplace allows an even greater level of amenities while offering sheer enjoyment of an evening fire on those cooler nights. Huge kitchen's attention to custom cabinetry, steel appliances, and granite counter tops, are sure to enhance cooking and eating experiences. Retire to the primary suite that exudes privacy and use of space and take advantage of the well thought out primary bath with every amenity for speedy starts for the day. From something as simple as a laundry room that does not abut any bedroom or living area, this plan provides plenty of comfort.

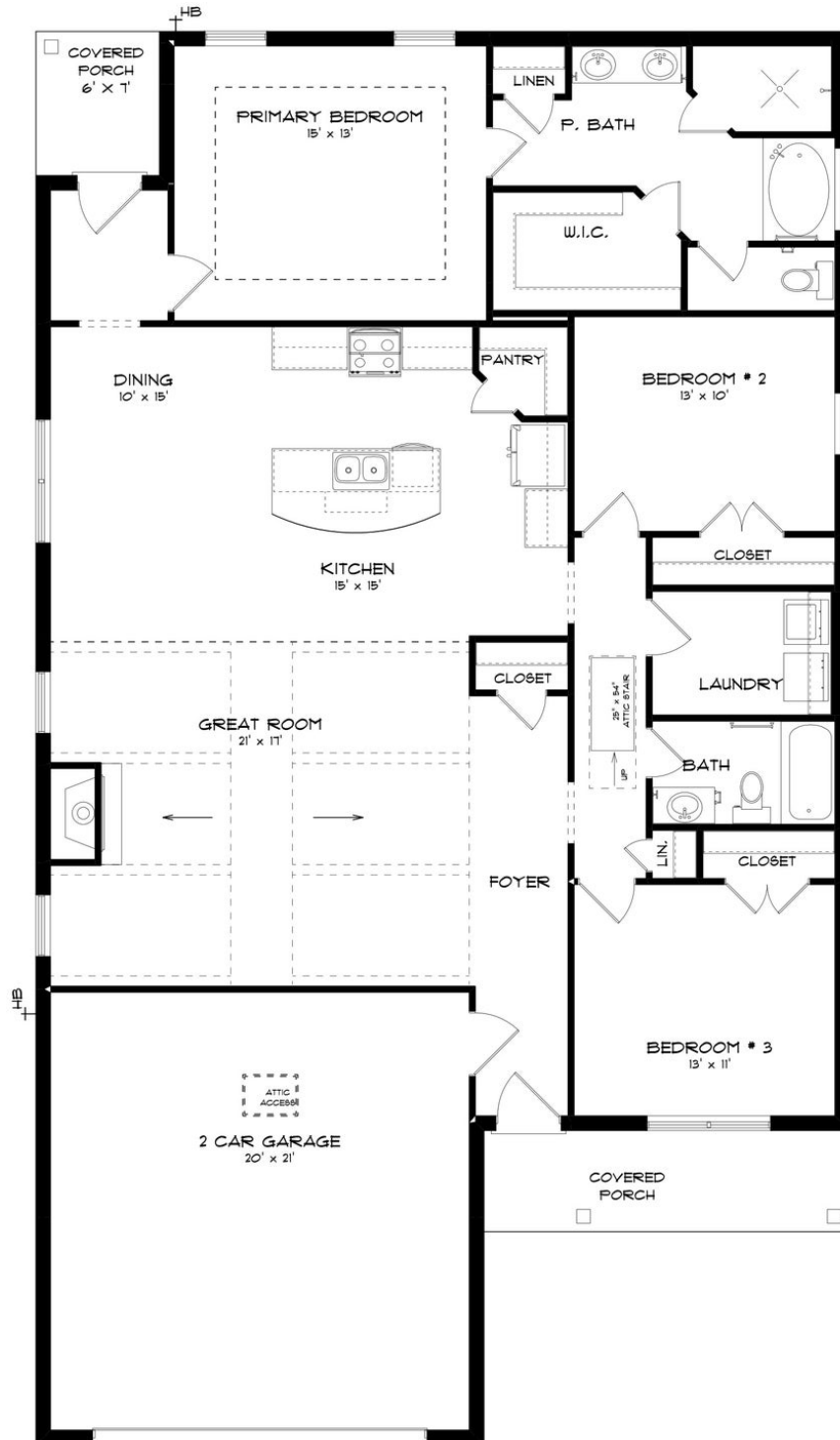
ABOUT MCCLAIN LANDING

Stone Martin Builders wants to help you get into the game of homeownership! Ask a Sales Professional about our special incentives and new home savings! Welcome to McClain Landing, a premier master-planned community offering new construction homes in Prattville, Alabama. Conveniently located near shopping, dining, the Robert Trent Jones – Capital Hill Golf Course, Gunter and Maxwell Air Force Bases, and downtown Montgomery, McClain Landing provides easy access to all the essentials of modern living. Just minutes from downtown Prattville, McClain Landing offers a tranquil yet convenient location to build your personalized home. Explore spacious floorplans with thoughtful design details, including gourmet kitchens and high-quality construction by Stone Martin Builders. Experience the future with integrated smart home connectivity and energy-efficient features, standard in every home at McClain Landing. From climate control to advanced security, these modern technologies enhance your daily living experience while reducing energy costs. Dive into relaxation at the community pool, challenge your neighbors to a game of pickleball, gather around the firepit for cozy evenings under the stars, or watch your kids play at the playground. With these amenities, McClain Landing offers a lifestyle that's hard to resist. Whether you're starting a family or looking for your forever home, McClain Landing provides the perfect setting to plant your roots and create lasting memories. Ready to exp...

Prices, plans, dimensions, features, specifications, materials, and availability of homes or communities are subject to change without notice or obligation. Illustrations are artists depictions only and may differ from completed improvements. All prices subject to change without notice. Please contact your sales associate before writing an offer.



ELEVATION H



Prices, plans, dimensions, features, specifications, materials, and availability of homes or communities are subject to change without notice or obligation. Illustrations are artists depictions only and may differ from completed improvements. All prices subject to change without notice. Please contact your sales associate before writing an offer.