



**STONE MARTIN
BUILDERS**



**1019 Sunfield Drive
Prattville, AL 36066
Glennbrooke**

Plan: Emberly
SQ FT: 4,047
Beds: 5
Baths: 3.5
Garage: 2

ABOUT THIS HOUSE

Indulge in the allure of the "Emberly" plan, a home designed for unparalleled versatility and luxury. This unique package boasts not one, but two primary suites, strategically positioned on each level. From the moment you step into the towering two-story foyer, you'll be captivated by the architectural details that define this home. For those who love to entertain, the spacious gourmet kitchen beckons, complete with a granite work island, custom cabinetry, and a generously sized walk-in pantry. Hosting gatherings becomes a breeze as you prepare a grand spread for any number of guests. The elegant formal dining room featuring a coffered ceiling add a touch of sophistication. The second floor unfolds to reveal three large bedrooms, an additional primary bedroom, and a loft area that surpasses expectations. This versatile space accommodates massive furniture and provides room for a pool or game table, promising endless possibilities. Step outside to the expansive rear covered patio, offering a variety of uses to enhance your comfort and elevate the desirability of this extraordinary home. The "Emberly" plan is a testament to refined living, inviting you to experience a residence that seamlessly combines style, space, and luxurious amenities.

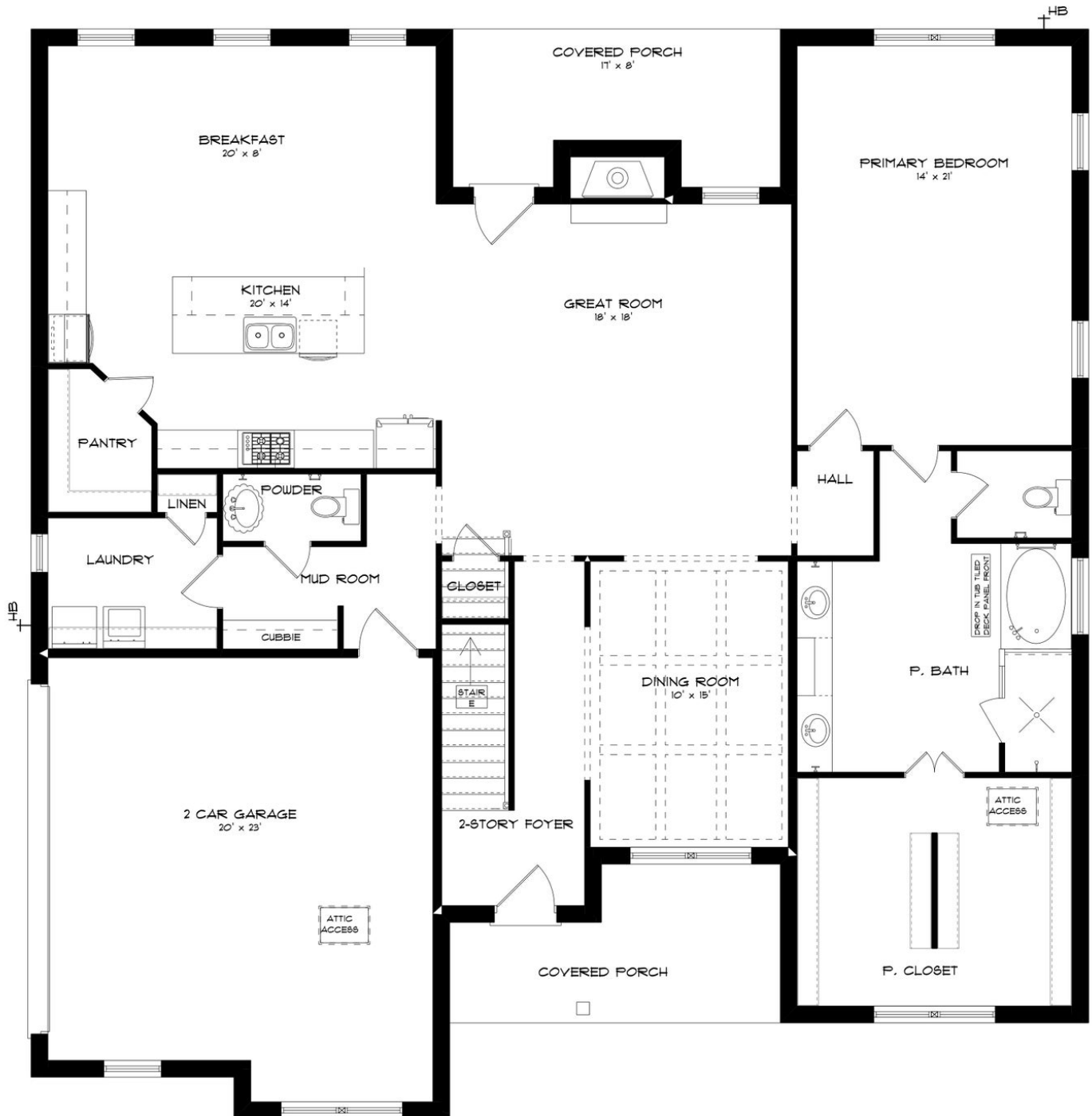
ABOUT GLENNBROOKE

Welcome to Glennbrooke, where modern living meets Southern charm in Prattville, Alabama. Nestled in a master-planned community, Glennbrooke offers new construction homes designed for the way you live. Conveniently located near shopping, dining, Gunter and Maxwell Air Force Bases, and downtown Montgomery, Glennbrooke provides easy access to all the essentials of modern living. Discover spacious floorplans with thoughtful design details, including gourmet kitchens and high-quality construction by Stone Martin Builders. Each home is crafted with energy efficiency in mind, ensuring comfort and cost savings for years to come. Experience the future with integrated smart home connectivity, enhancing your daily living experience with modern conveniences. From climate control to advanced security features, these technologies elevate your lifestyle while providing peace of mind. Cool off on hot summer days at the community pool, laugh and play at the playground, or enjoy family fun at the splash pad. Immerse yourself in the welcoming community of Glennbrooke, where neighbors become friends and the landscaping is meticulously maintained. With low yearly dues and a wealth of amenities, Glennbrooke offers a lifestyle that's hard to resist. Ready to experience the Stone Martin difference? Schedule a visit to Glennbrooke and meet with our knowledgeable Sales Professionals. Explore available homes, envision your future and embark on the journey to find your personal oasis in Prattville, AL.

Prices, plans, dimensions, features, specifications, materials, and availability of homes or communities are subject to change without notice or obligation. Illustrations are artists depictions only and may differ from completed improvements. All prices subject to change without notice. Please contact your sales associate before writing an offer.



FIRST FLOOR (H)



Prices, plans, dimensions, features, specifications, materials, and availability of homes or communities are subject to change without notice or obligation. Illustrations are artists depictions only and may differ from completed improvements. All prices subject to change without notice. Please contact your sales associate before writing an offer.



SECOND FLOOR (H)

