



**STONE MARTIN
BUILDERS**



**588 Riverdale Drive
Pike Road, AL 36064
Abbingtion**

Plan: Kinkade
SQ FT: 2,383
Beds: 3
Baths: 2.5
Garage: 2

ABOUT THIS HOUSE

Constant appeal and elegant definitions are found in the "Kinkade" plan for those calling for luxury and comfort. A vaulted beamed ceiling in the huge great room accentuates the space along with excellent finishes. The custom fireplace allows an even greater level of amenities while offering sheer enjoyment of an evening fire on those cooler nights. The huge kitchen's attention to custom cabinetry, upgraded stainless steel appliances, and granite counter tops, are sure to enhance cooking and eating experiences. Retire to the primary suite that exudes privacy and use of space and take advantage of the well thought out primary bath with every amenity for speedy starts for the day. From something as simple as a laundry room that does not abut any bedroom or the bonus room located upstairs along with a half bath that can be used as an office space, entertainment room, or even another bedroom; this plan provides plenty of comfort.

ABOUT ABBINGTON

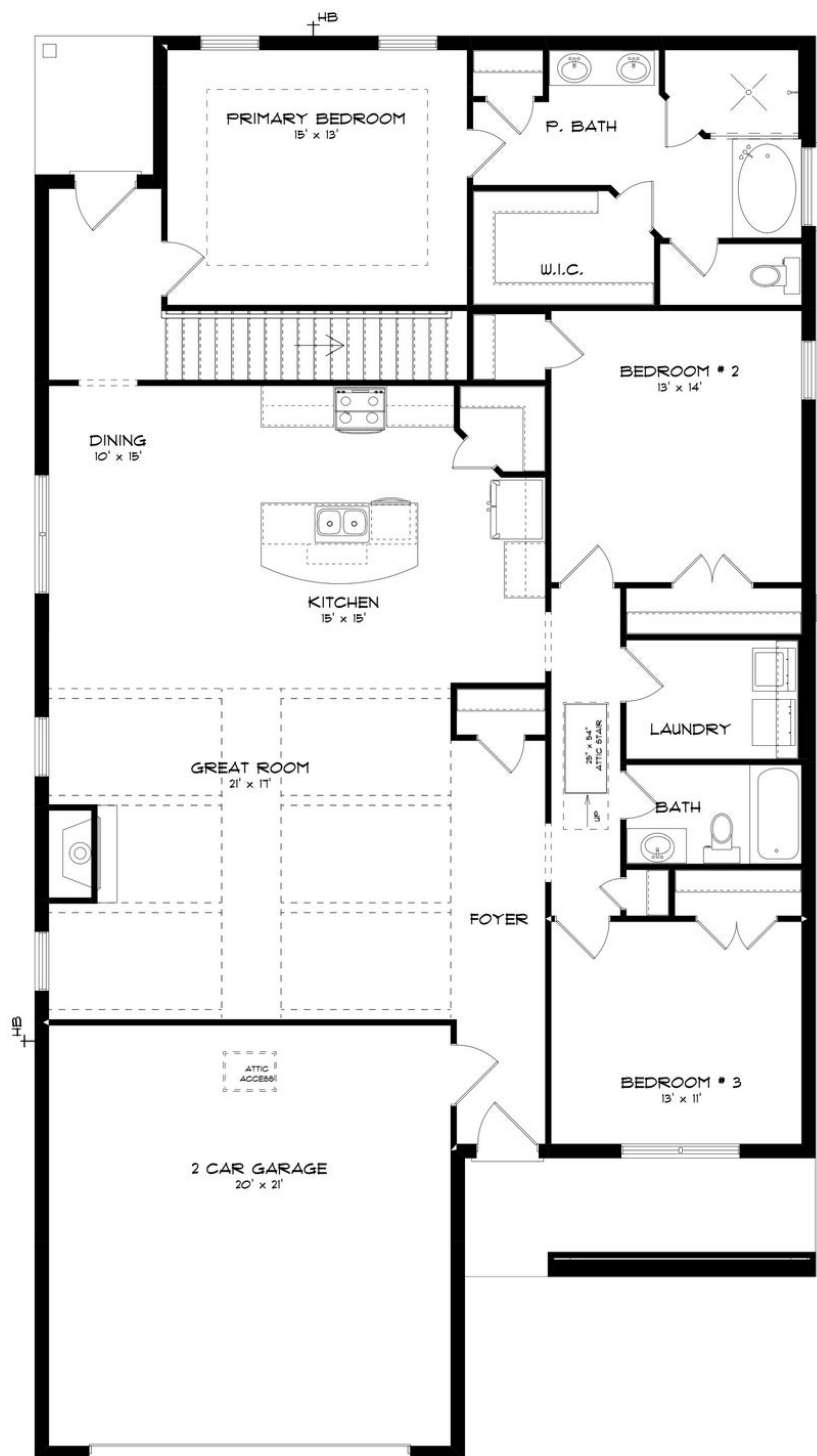
Stone Martin Builders wants to help you Splash into Savings on a new home! Ask a Sales Professional about our special incentives and new home savings! Welcome to Abbingtion, Pike Road's premier master-planned community by Stone Martin Builders. This vibrant community offers an array of new construction single-family residences and townhomes nestled in the picturesque surroundings of Pike Road, AL. Situated amidst the tranquil countryside, Abbingtion provides a serene retreat while remaining conveniently close to essential amenities. Just a short drive from I-85, residents enjoy easy access to urban conveniences like The Shoppes at Eastchase, Publix, Costco, Starbucks, Target, and many delicious dining options. Zoned for the esteemed Pike Road School System and near the Pike Road Nature Trail, Abbingtion offers top-tier education options and ample opportunities for outdoor recreation. Residents will also delight in the community's array of amenities, including a sparkling community pool, inviting playground, cozy fire pit, and charming gazebo—perfect for forging connections with neighbors and fostering a strong sense of community. At Abbingtion, you'll discover meticulously crafted homes renowned for their spacious floorplans, thoughtful design details, and gourmet kitchens. Each home boasts integrated smart home connectivity and high-quality construction, ensuring modern comfort, convenience, and energy efficiency. Ready to experience the Stone Martin Builders difference?...

Prices, plans, dimensions, features, specifications, materials, and availability of homes or communities are subject to change without notice or obligation. Illustrations are artists depictions only and may differ from completed improvements. All prices subject to change without notice. Please contact your sales associate before writing an offer.



**STONE MARTIN
BUILDERS**

FIRST FLOOR (H)

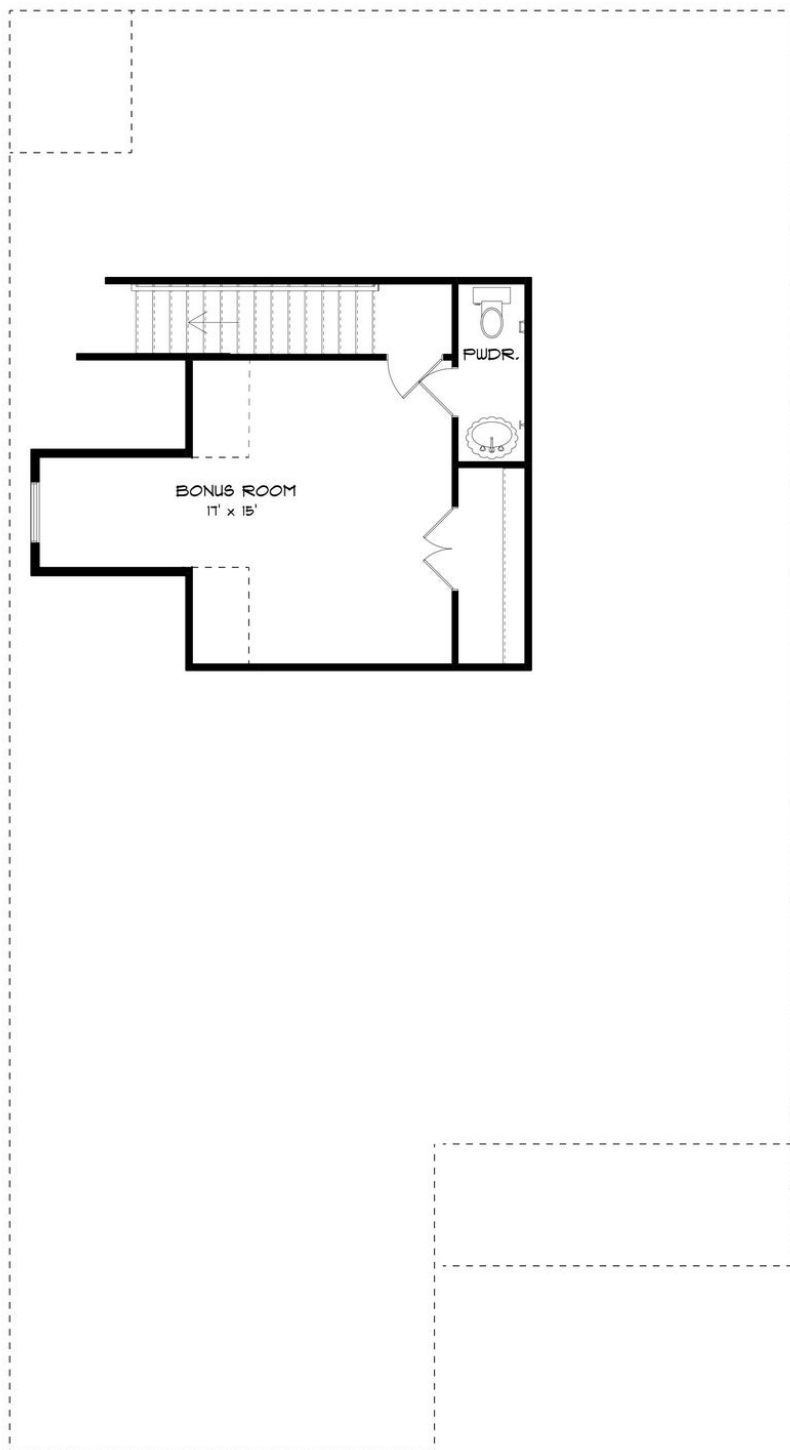


Prices, plans, dimensions, features, specifications, materials, and availability of homes or communities are subject to change without notice or obligation. Illustrations are artists depictions only and may differ from completed improvements. All prices subject to change without notice. Please contact your sales associate before writing an offer.



STONE MARTIN
BUILDERS

SECOND FLOOR (H)



Prices, plans, dimensions, features, specifications, materials, and availability of homes or communities are subject to change without notice or obligation. Illustrations are artists depictions only and may differ from completed improvements. All prices subject to change without notice. Please contact your sales associate before writing an offer.