



**STONE MARTIN
BUILDERS**



**7513 Shelby Maples Drive
SE**

**Owens Cross Roads, AL
35763**

Nature's Walk On The Flint

\$548,284

Plan: Dogwood

SQ FT: 3,088

Beds: 4

Baths: 3.0

Garage: 2

ABOUT THIS HOUSE

This plan is sure to steal the show, just like a dogwood tree in full bloom. The long front porch is a perfect primer for all of the beauty housed in these four walls. The entryway is flanked with a study on one side and a formal dining on the other, and then you are lead directly into the large kitchen. An abundance of storage, both in cabinets and in the pantry, coupled with the large eat in island make this space a chef's dream. The kitchen flows seamlessly into the large great room with a corner fireplace and wall of windows looking out onto the covered porch on the rear of the home. Off to one side of the main living area you'll find the primary suite that leaves nothing to be desired: tray ceilings, soaking bathtub, roomy shower, and one of the largest walk-in closets we have ever laid eyes on. The opposite side of the main living area is home to three additional bedrooms and two full bathrooms, plus a drop zone and laundry room that lead into the garage. What more could you need in a home?!

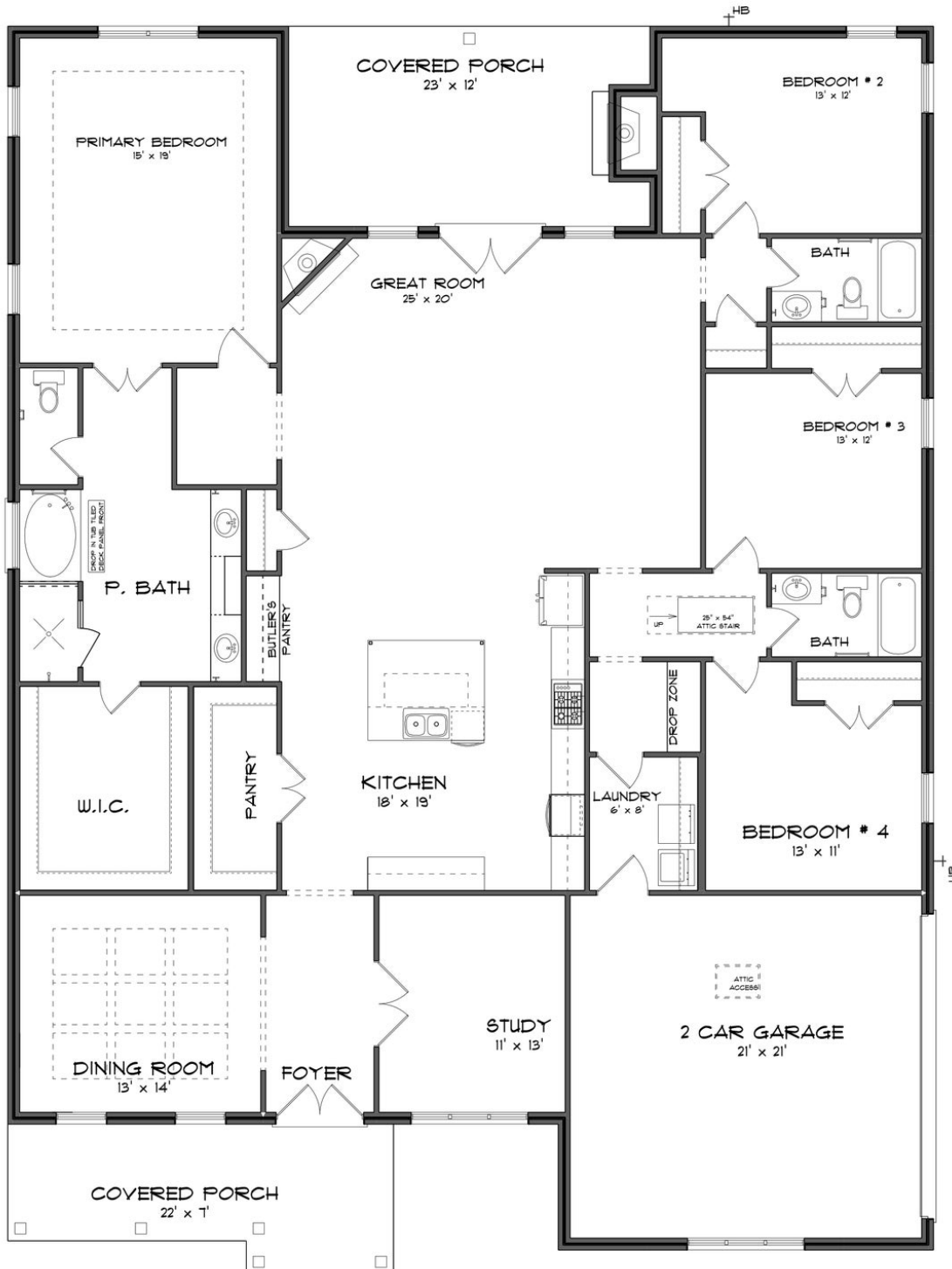
ABOUT NATURE'S WALK ON THE FLINT

Nestled along the picturesque Flint River, Nature's Walk on the Flint invites you to immerse yourself in the tranquility of this premier community, where nature meets luxury. For those who revel in the outdoors, Nature's Walk on the Flint is a haven. Surrounded by nature trails, and in proximity to the Robert Trent Jones golf course, the community offers a gateway to adventure. Discover the Goldsmith Schiffman Wildlife Sanctuary, JD & Annie S. Hays Nature Preserve, Madison County Nature Trail, and the Aldridge Creek Greenway – all just moments away. Our homes, ranging from 2,400 to 4,700 square feet, are crafted for those who seek excellence. Experience quality construction that stands the test of time, paired with integrated smart home technology for modern living. From gourmet kitchens to designer-selected finishes, every detail is meticulously designed to elevate your lifestyle. Enjoy the proximity to Downtown Huntsville, ensuring that cultural and entertainment delights are within easy reach. Whether it's a leisurely stroll along nature trails or a night out in the city, this community offers the perfect balance. Ready to experience the Stone Martin Builders difference? Schedule a visit to Nature's Walk on the Flint and meet with our knowledgeable Sales Professionals. Explore available homes and embark on the journey to find your personal oasis in Owens Cross Roads, AL.

Prices, plans, dimensions, features, specifications, materials, and availability of homes or communities are subject to change without notice or obligation. Illustrations are artists depictions only and may differ from completed improvements. All prices subject to change without notice. Please contact your sales associate before writing an offer.



FIRST FLOOR (H)



Prices, plans, dimensions, features, specifications, materials, and availability of homes or communities are subject to change without notice or obligation. Illustrations are artists depictions only and may differ from completed improvements. All prices subject to change without notice. Please contact your sales associate before writing an offer.