



**STONE MARTIN  
BUILDERS**



**7511 Shelby Maples Drive  
Owens Cross Roads, AL  
35763**

**Nature's Walk On The Flint**

**\$497,500**

**Plan:** St James

**SQ FT:** 2,634

**Beds:** 4

**Baths:** 3.0

**Garage:** 3

## ABOUT THIS HOUSE

"St. James" plan is ranked among the angels. The long foyer entrance leads into the stunning kitchen complete with an island and gorgeous granite countertops, the dining space adjacent. The kitchen opens to an extraordinarily great room featuring elegant hardwood flooring and an attractive fireplace alongside vaulted ceilings. The rear covered patio provides ample shade and a peaceful setting. The plan is rounded out exquisitely with a 3-car garage with plenty of storage space or hobby space for easy come and go access. The 4 bedroom and 3 bath plan is charming for a multi-generational family because the 3 distinct sleeping areas and an in-suite for parents or a grown child moving back home.

## ABOUT NATURE'S WALK ON THE FLINT

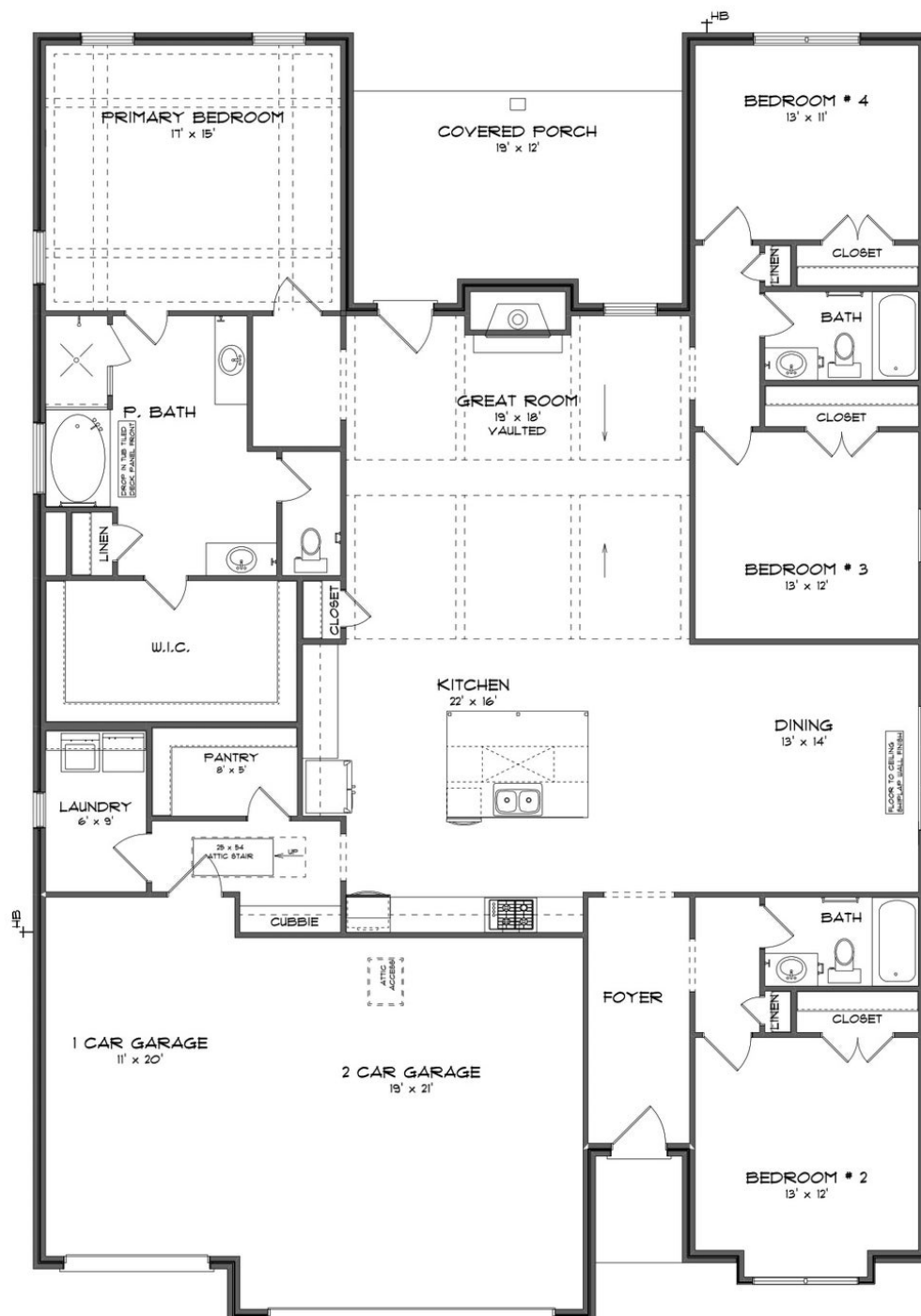
Stone Martin Builders wants to help you Splash into Savings on a new home! Ask a Sales Professional about our special incentives and new home savings! Nestled along the picturesque Flint River, Nature's Walk on the Flint invites you to immerse yourself in the tranquility of this premier community, where nature meets luxury. For those who revel in the outdoors, Nature's Walk on the Flint is a haven. Surrounded by nature trails, and in proximity to the Robert Trent Jones golf course, the community offers a gateway to adventure. Discover the Goldsmith Schiffman Wildlife Sanctuary, JD & Annie S. Hays Nature Preserve, Madison County Nature Trail, and the Aldridge Creek Greenway – all just moments away. Our homes, ranging from 2,400 to 4,700 square feet, are crafted for those who seek excellence. Experience quality construction that stands the test of time, paired with integrated smart home technology for modern living. From gourmet kitchens to designer-selected finishes, every detail is meticulously designed to elevate your lifestyle. Enjoy the proximity to Downtown Huntsville, ensuring that cultural and entertainment delights are within easy reach. Whether it's a leisurely stroll along nature trails or a night out in the city, this community offers the perfect balance. Ready to experience the Stone Martin Builders difference? Schedule a visit to Nature's Walk on the Flint and meet with our knowledgeable Sales Professionals. Explore available homes and embark on the ...

Prices, plans, dimensions, features, specifications, materials, and availability of homes or communities are subject to change without notice or obligation. Illustrations are artists depictions only and may differ from completed improvements. All prices subject to change without notice. Please contact your sales associate before writing an offer.



**STONE MARTIN  
BUILDERS**

## ELEVATION E



Prices, plans, dimensions, features, specifications, materials, and availability of homes or communities are subject to change without notice or obligation. Illustrations are artists depictions only and may differ from completed improvements. All prices subject to change without notice. Please contact your sales associate before writing an offer.