



**STONE MARTIN
BUILDERS**



**7503 Shelby Maples Drive
SE**

**Owens Cross Roads, AL
35763**

Nature's Walk On The Flint

Plan: Mayfair

SQ FT: 3,670

Beds: 5

Baths: 4.5

Garage: 3

ABOUT THIS HOUSE

Discover the charm of the "Mayfair" plan—a home thoughtfully crafted for comfortable living in every way. From the inviting grand entrance with a 2-story foyer to the practical open floorplan, this home seamlessly combines grandeur with functionality. Entertain effortlessly with a stylish dining room, a granite-topped butler's pantry, and a spacious kitchen serving island. Bedroom needs are met with a primary suite and a guest suite on the main level. Enjoy a primary suite that's both spacious and cozy, ensuring privacy and meeting various lifestyle demands. Upstairs, find three generously sized bedrooms, a flexible loft area, and practical use of space. In every aspect, this plan promises a fabulous living experience that won't disappoint. Get ready to feel right at home with the "Mayfair" plan!

ABOUT NATURE'S WALK ON THE FLINT

Nestled along the picturesque Flint River, Nature's Walk on the Flint invites you to immerse yourself in the tranquility of this premier community, where nature meets luxury. For those who revel in the outdoors, Nature's Walk on the Flint is a haven. Surrounded by nature trails, and in proximity to the Robert Trent Jones golf course, the community offers a gateway to adventure. Discover the Goldsmith Schiffman Wildlife Sanctuary, JD & Annie S. Hays Nature Preserve, Madison County Nature Trail, and the Aldridge Creek Greenway – all just moments away. Our homes, ranging from 2,400 to 4,700 square feet, are crafted for those who seek excellence. Experience quality construction that stands the test of time, paired with integrated smart home technology for modern living. From gourmet kitchens to designer-selected finishes, every detail is meticulously designed to elevate your lifestyle. Enjoy the proximity to Downtown Huntsville, ensuring that cultural and entertainment delights are within easy reach. Whether it's a leisurely stroll along nature trails or a night out in the city, this community offers the perfect balance. Ready to experience the Stone Martin Builders difference? Schedule a visit to Nature's Walk on the Flint and meet with our knowledgeable Sales Professionals. Explore available homes and embark on the journey to find your personal oasis in Owens Cross Roads, AL.

Prices, plans, dimensions, features, specifications, materials, and availability of homes or communities are subject to change without notice or obligation. Illustrations are artists depictions only and may differ from completed improvements. All prices subject to change without notice. Please contact your sales associate before writing an offer.



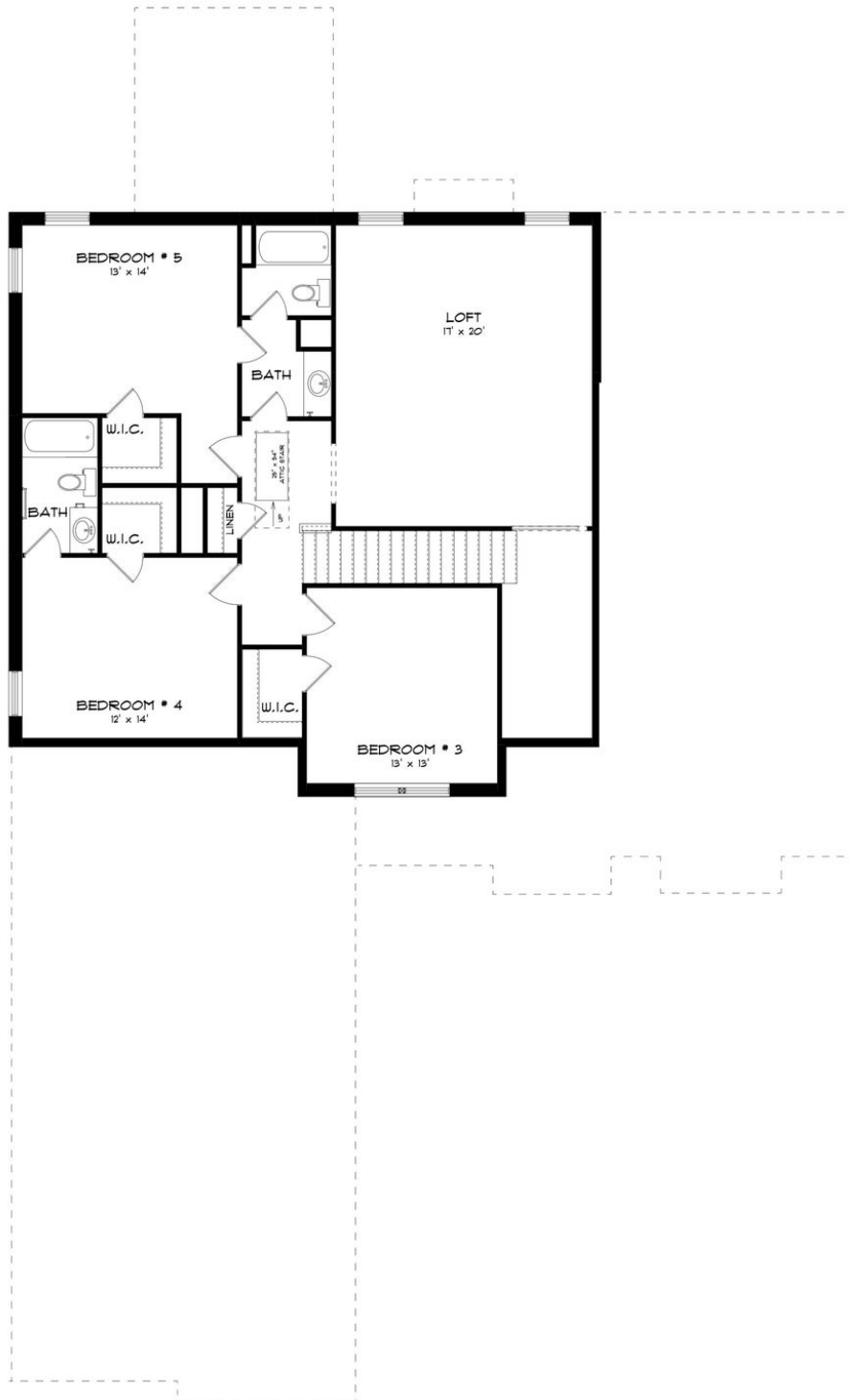
FIRST FLOOR H-3 CAR)



Prices, plans, dimensions, features, specifications, materials, and availability of homes or communities are subject to change without notice or obligation. Illustrations are artists depictions only and may differ from completed improvements. All prices subject to change without notice. Please contact your sales associate before writing an offer.



SECOND FLOOR (H-3 CAR)



Prices, plans, dimensions, features, specifications, materials, and availability of homes or communities are subject to change without notice or obligation. Illustrations are artists depictions only and may differ from completed improvements. All prices subject to change without notice. Please contact your sales associate before writing an offer.