



**STONE MARTIN
BUILDERS**



2042 Superior Drive

Opelika, AL 36804

Laurel Lakes

\$323,899

Plan: Thrive Fairway

SQ FT: 1,855

Beds: 3

Baths: 2.0

Garage: 2

ABOUT THIS HOUSE

The "Fairway" floorplan makes a dramatic statement. The main hub of the home is its openness from the great room, dining, and kitchen area. This well thought out home is brimming with generous in kitchen, both baths & hallways. Primary bedroom is tucked away from the other bedrooms for ultimate privacy. Carefree kitchen aims to please with massive granite counter space. Step onto the covered patio, great for entertaining, or pull into the two car garage that complete the package this this amazing plan.

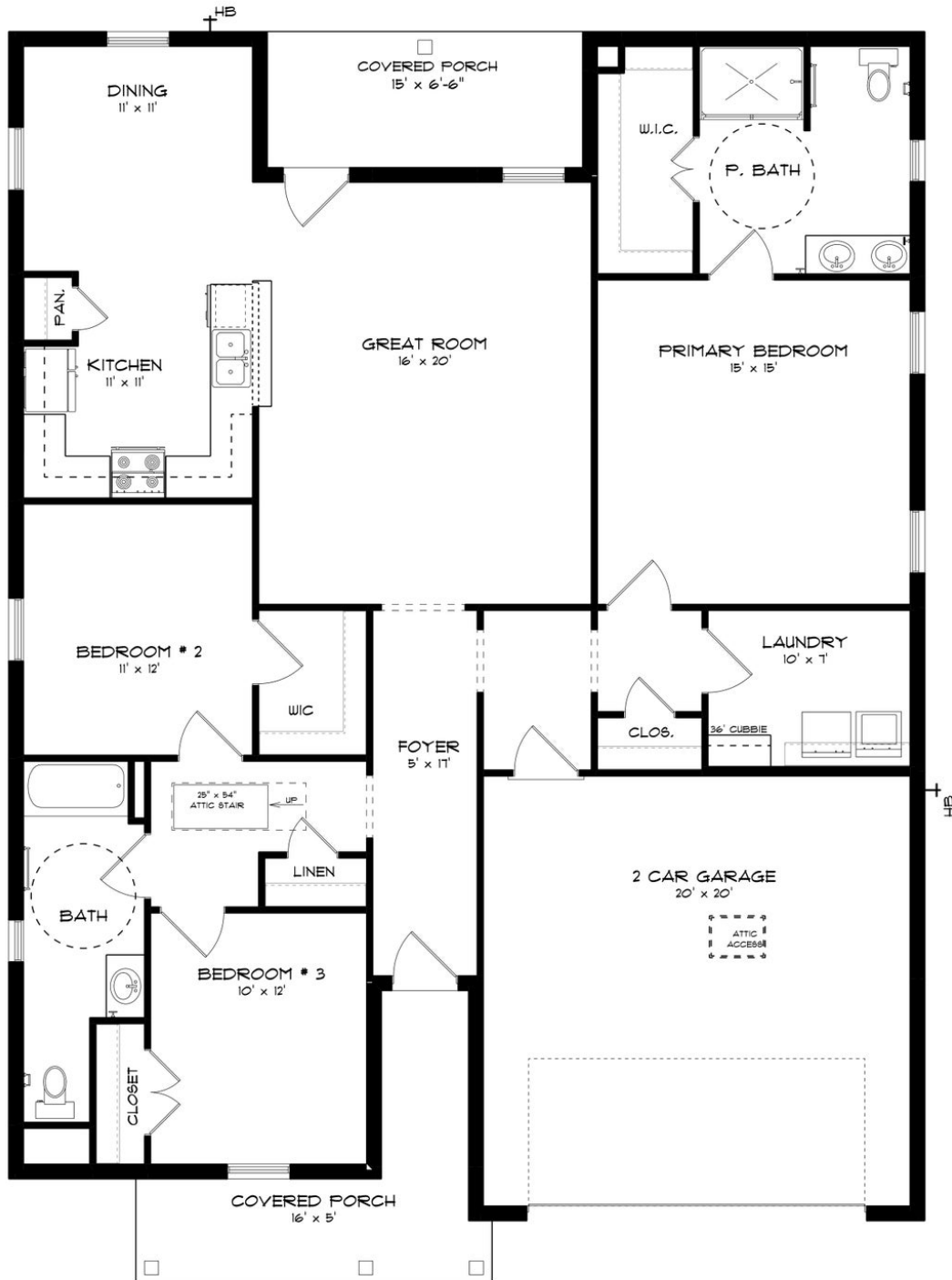
ABOUT LAUREL LAKES

Welcome to Laurel Lakes, a place where serenity, convenience, and a strong sense of community seamlessly converge. Our meticulously planned community is on the brink of unveiling a rich array of top-tier amenities: a pristine swimming pool for relaxation, a clubhouse designed for gatherings, and expansive open spaces catering to all ages. Nestled at the intersection of N. Uniroyal Road and Ridge Road in Opelika, Laurel Lakes provides effortless access to the bustling I-85 and Highway 280, ensuring convenient connectivity to nearby destinations and conveniences. Enjoy spacious floorplans crafted with meticulous attention to detail by Stone Martin Builders, renowned for our commitment to high-quality construction, energy efficiency, and integrated smart home connectivity. At Laurel Lakes, we're not just creating a community; we're crafting a lifestyle tailored to your desires. Join us in this welcoming haven, where every day feels like a fresh adventure, and where neighbors become friends. Ready to experience the Stone Martin Builders difference? Schedule a visit to Laurel Lakes and meet with our knowledgeable Sales Professionals. Explore available homes and embark on the journey to find your personal oasis in Opelika, AL.

Prices, plans, dimensions, features, specifications, materials, and availability of homes or communities are subject to change without notice or obligation. Illustrations are artists depictions only and may differ from completed improvements. All prices subject to change without notice. Please contact your sales associate before writing an offer.



ELEVATION B



Prices, plans, dimensions, features, specifications, materials, and availability of homes or communities are subject to change without notice or obligation. Illustrations are artists depictions only and may differ from completed improvements. All prices subject to change without notice. Please contact your sales associate before writing an offer.