



**STONE MARTIN  
BUILDERS**



**9355 Paxton Street  
Montgomery, AL 36117**

**Jubilee**

**\$437,284**

**Plan: Rosewood**

**SQ FT: 2,751**

**Beds: 4**

**Baths: 3.0**

**Garage: 2**

## ABOUT THIS HOUSE

The Rosewood is a well-planned floor plan that is budding with four bedrooms, plus a bonus room, and three full bathrooms. The foyer opens into an expansive kitchen with a great island, granite countertops, and a pantry. The spacious kitchen flows into its own convenient breakfast area opening to a great room perfect for entertaining and comfortable living. Off the great room, bedrooms two, three, and four reside with spacious closets and a great hall connecting the bedrooms to the bath with a double vanity. Secluded at the corner of the home, the primary suite is a dream, with a huge walk in closet, spacious bedroom, and a bathroom with a soaking tub and large tiled shower. The first floor is complete with a covered porch and a two -car garage. Up the stairs, a bonus room with a walk-in closet and a full bath, is ready to serve a wide variety of purposes for your family. This plan is sure to suit the needs of your growing family.

## ABOUT JUBILEE

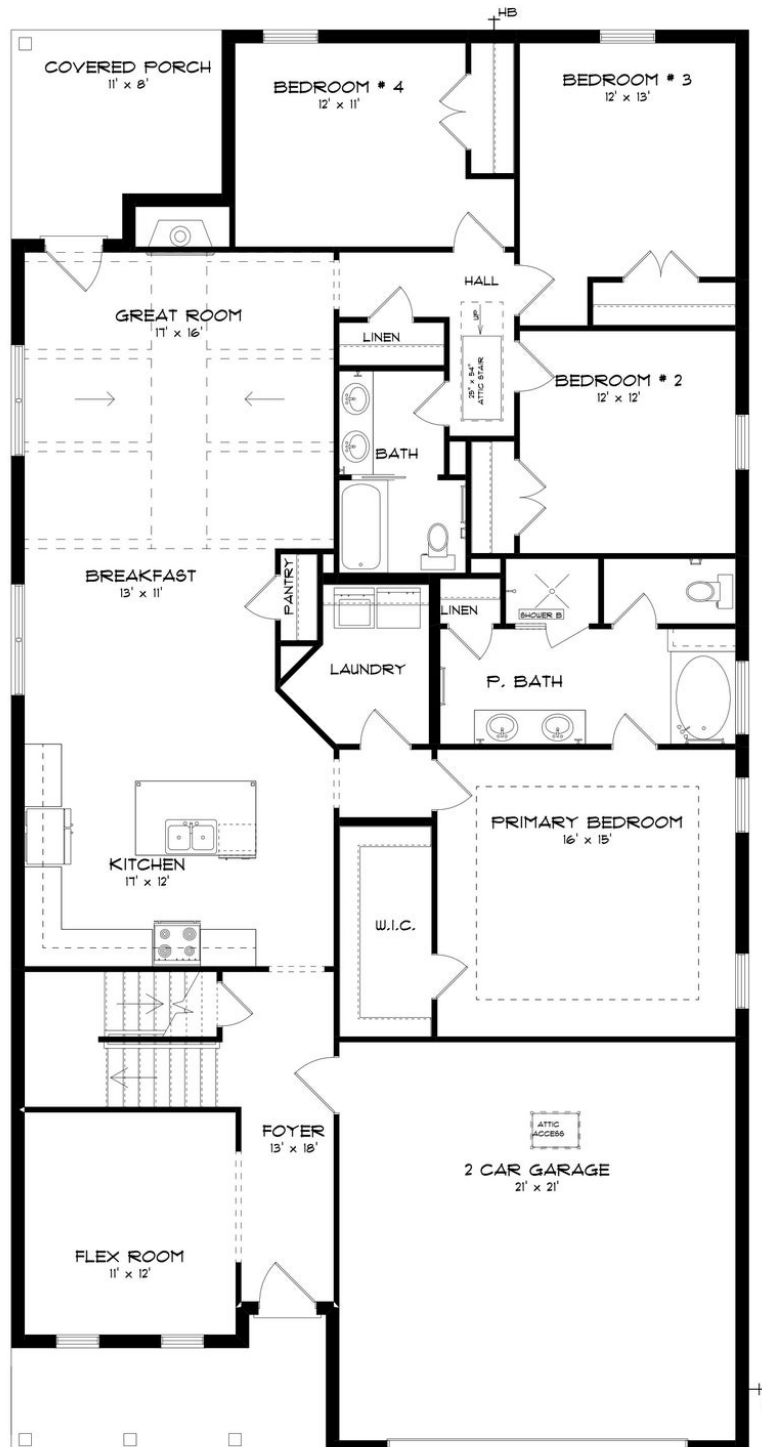
Stone Martin Builders wants to help you Splash into Savings on a new home! Ask a Sales Professional about our special incentives and new home savings! Discover the allure of Jubilee, a Stone Martin Builders new home community nestled in the tranquil outskirts of Montgomery, AL. Escape the hustle and bustle while still enjoying easy access to the city's amenities, ensuring you never miss out on what Montgomery has to offer. Conveniently located near shopping, dining, and entertainment, including The Shoppes at Eastchase, Jubilee offers the perfect balance of suburban serenity and urban convenience. Multiple schools in close proximity make carpooling a breeze, while easy access to the interstate simplifies commuting. At Jubilee, experience the epitome of modern living with spacious floorplans, meticulously crafted to enhance your lifestyle. Immerse yourself in thoughtful design details and gourmet kitchens, perfect for entertaining and everyday living. Integrated smart home connectivity ensures convenience at your fingertips, while our commitment to high-quality construction and energy efficiency guarantees a home that exceeds expectations. Embrace the sense of community at Jubilee, where neighbors become friends and lasting connections are made. Ready to experience the Stone Martin Builders difference? Schedule a visit to Hunter's Hill and meet with our knowledgeable Sales Professionals. Explore available homes and embark on the journey to find your personal oasis in Ent...

Prices, plans, dimensions, features, specifications, materials, and availability of homes or communities are subject to change without notice or obligation. Illustrations are artists depictions only and may differ from completed improvements. All prices subject to change without notice. Please contact your sales associate before writing an offer.



**STONE MARTIN  
BUILDERS**

## FIRST FLOOR (F)

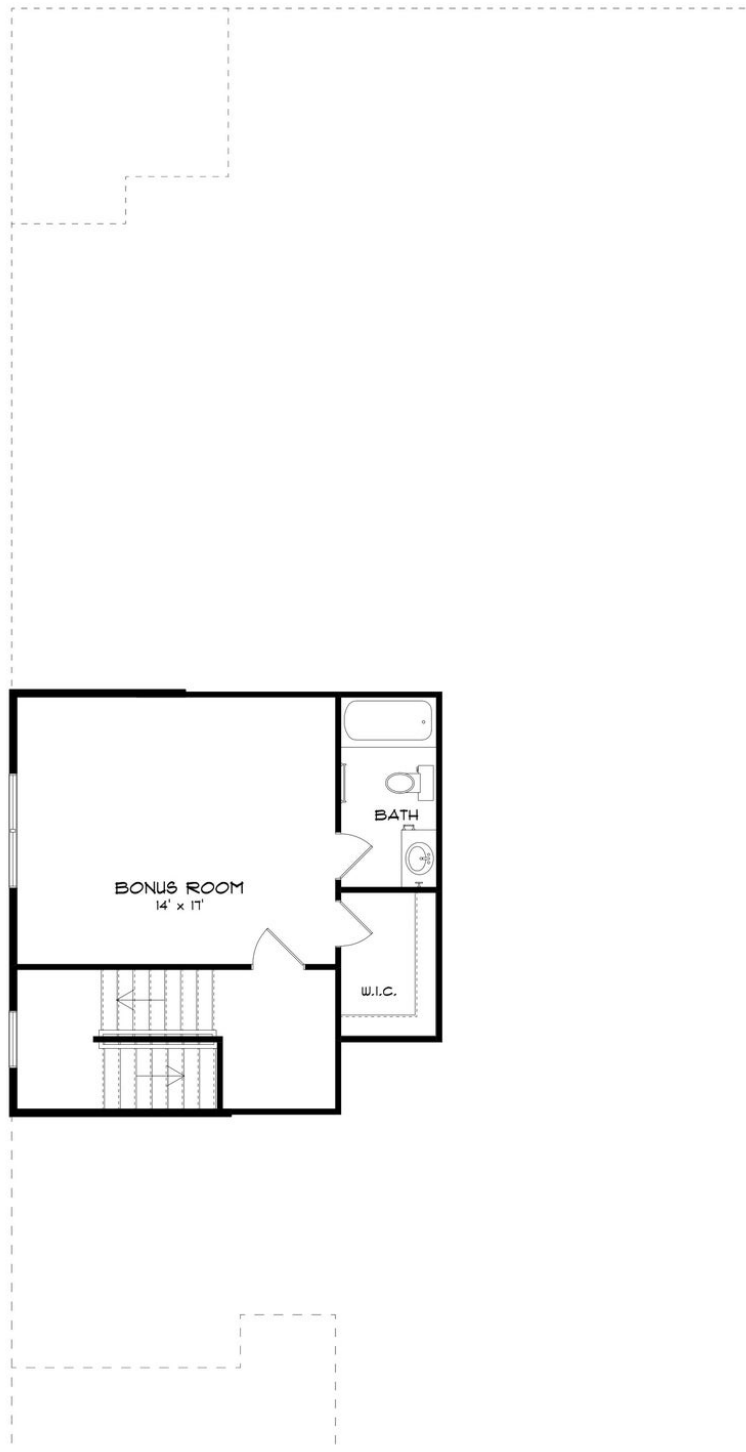


Prices, plans, dimensions, features, specifications, materials, and availability of homes or communities are subject to change without notice or obligation. Illustrations are artists depictions only and may differ from completed improvements. All prices subject to change without notice. Please contact your sales associate before writing an offer.



**STONE MARTIN  
BUILDERS**

## SECOND FLOOR (F)



Prices, plans, dimensions, features, specifications, materials, and availability of homes or communities are subject to change without notice or obligation. Illustrations are artists depictions only and may differ from completed improvements. All prices subject to change without notice. Please contact your sales associate before writing an offer.