



**STONE MARTIN  
BUILDERS**



**9343 Paxton Street  
Montgomery, AL 36117**

**Jubilee**

**\$491,154**

**Plan: Cunningham**

**SQ FT: 3,089**

**Beds: 4**

**Baths: 3.0**

**Garage: 2**

## ABOUT THIS HOUSE

The "Cunningham" floorplan features cunning details that will have you falling in love with this plan. The "Cunningham" boasts two entrances, one through the garage to the mudroom and one through the large, covered porch to the foyer. The foyer leads directly into the all-in-one kitchen, great room and dining room. The open-concept is a dream for entertaining or spending quality time together. The primary retreat off of the kitchen features a luxurious primary bathroom and two extensive walk-in closets. With two vanities on either side of the primary bathroom, you will never be fighting for counter space or elbow room. The upstairs flaunts a unique design with a loft, two bedrooms and a sweeping bonus room/bedroom. Need more space for a playroom? Make it a bonus room! Need a little more guest room or family room? Make it a bedroom and sitting area! The "Cunningham" floorplan offers endless possibilities to cater your house to your needs.

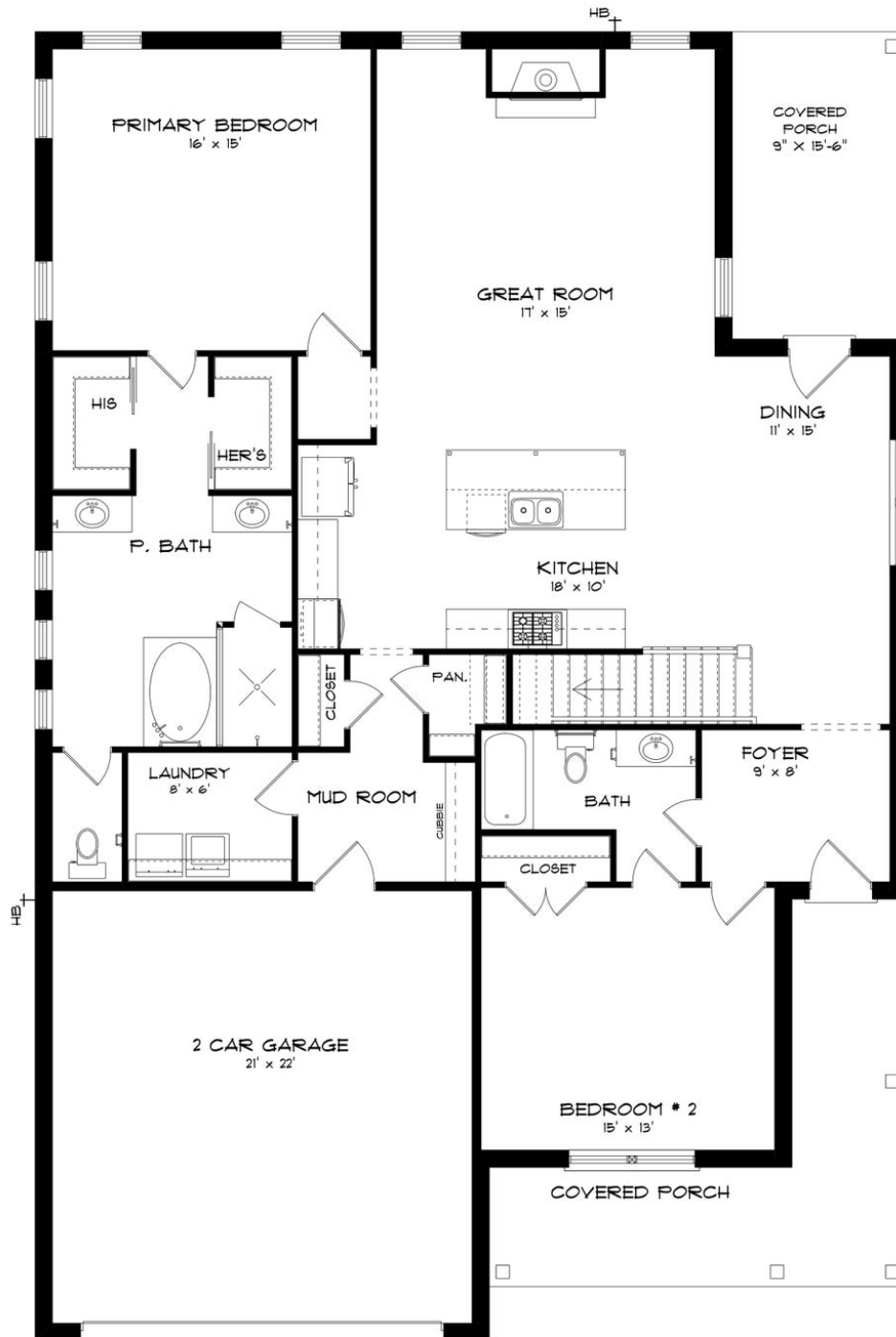
## ABOUT JUBILEE

Stone Martin Builders wants to help you Splash into Savings on a new home! Ask a Sales Professional about our special incentives and new home savings! Discover the allure of Jubilee, a Stone Martin Builders new home community nestled in the tranquil outskirts of Montgomery, AL. Escape the hustle and bustle while still enjoying easy access to the city's amenities, ensuring you never miss out on what Montgomery has to offer. Conveniently located near shopping, dining, and entertainment, including The Shoppes at Eastchase, Jubilee offers the perfect balance of suburban serenity and urban convenience. Multiple schools in close proximity make carpooling a breeze, while easy access to the interstate simplifies commuting. At Jubilee, experience the epitome of modern living with spacious floorplans, meticulously crafted to enhance your lifestyle. Immerse yourself in thoughtful design details and gourmet kitchens, perfect for entertaining and everyday living. Integrated smart home connectivity ensures convenience at your fingertips, while our commitment to high-quality construction and energy efficiency guarantees a home that exceeds expectations. Embrace the sense of community at Jubilee, where neighbors become friends and lasting connections are made. Ready to experience the Stone Martin Builders difference? Schedule a visit to Hunter's Hill and meet with our knowledgeable Sales Professionals. Explore available homes and embark on the journey to find your personal oasis in Ent...

Prices, plans, dimensions, features, specifications, materials, and availability of homes or communities are subject to change without notice or obligation. Illustrations are artists depictions only and may differ from completed improvements. All prices subject to change without notice. Please contact your sales associate before writing an offer.



## FIRST FLOOR (D)



Prices, plans, dimensions, features, specifications, materials, and availability of homes or communities are subject to change without notice or obligation. Illustrations are artists depictions only and may differ from completed improvements. All prices subject to change without notice. Please contact your sales associate before writing an offer.



## SECOND FLOOR (D)

