



**STONE MARTIN  
BUILDERS**



**9273 Paxton Street  
Montgomery, AL 36117**

**Jubilee**

**\$417,149**

**Plan: Overton**

**SQ FT: 2,682**

**Beds: 4**

**Baths: 2.5**

**Garage: 2**

## **ABOUT THIS HOUSE**

The "Overton" is a 1 ½ story open floorplan with ample possibilities. This four bedroom, two and a half bath plan with bonus room begins with a refined foyer entry way that opens into a roomy living area with a vaulted ceiling. Next experience the open kitchen with large center island and adjoining dining room. The kitchen offers built in appliances, granite countertops and an expanded pantry. The primary quarters provide a large bedroom and walk in closet as well as a luxurious bathroom complete with a double granite vanity, garden/soaking tub, and tiled shower with glass door. The bonus room located upstairs includes a half bath and has plenty of possibilities as an entertainment area or extra bedroom. This layout truly is a must see!

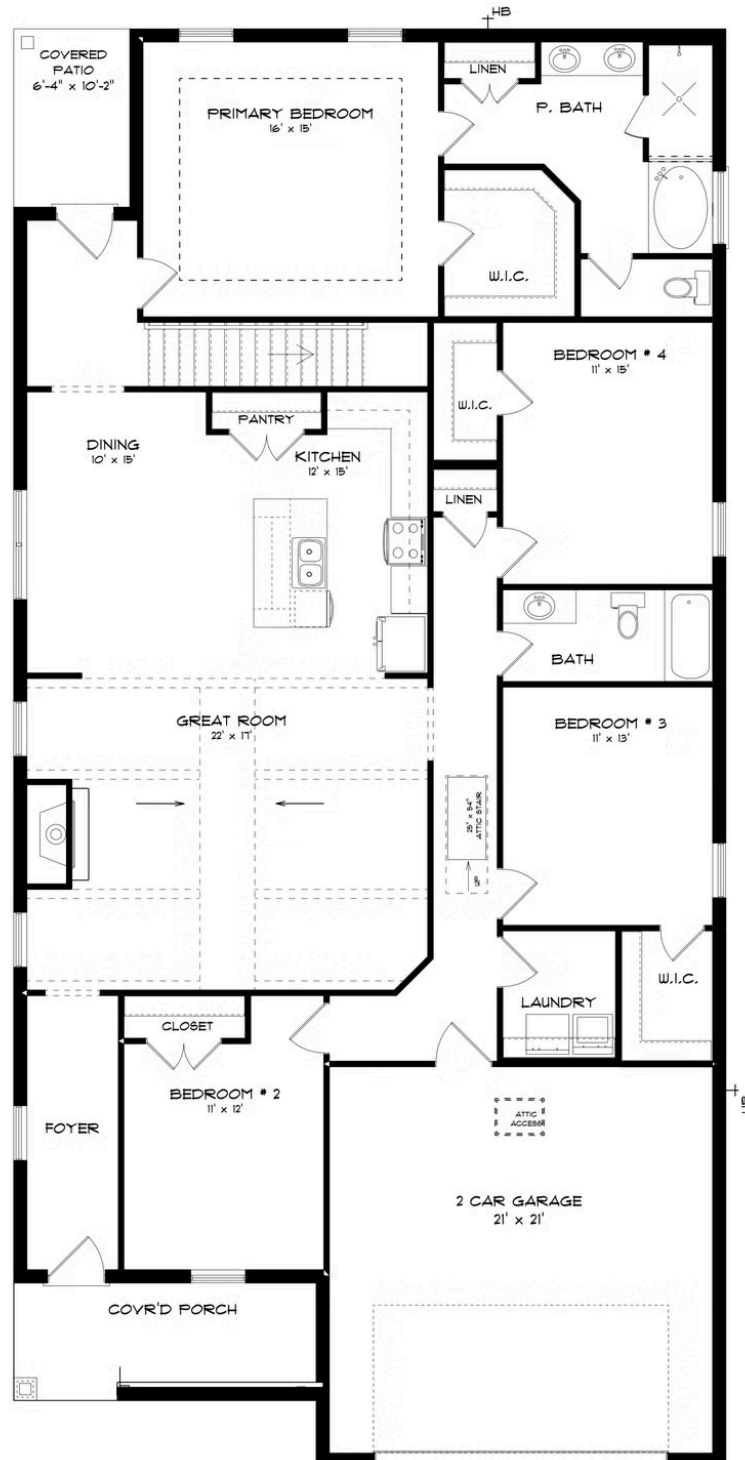
## **ABOUT JUBILEE**

Discover the allure of Jubilee, a Stone Martin Builders new home community nestled in the tranquil outskirts of Montgomery, AL. Escape the hustle and bustle while still enjoying easy access to the city's amenities, ensuring you never miss out on what Montgomery has to offer. Conveniently located near shopping, dining, and entertainment, including The Shoppes at Eastchase, Jubilee offers the perfect balance of suburban serenity and urban convenience. Multiple schools in close proximity make carpooling a breeze, while easy access to the interstate simplifies commuting. At Jubilee, experience the epitome of modern living with spacious floorplans, meticulously crafted to enhance your lifestyle. Immerse yourself in thoughtful design details and gourmet kitchens, perfect for entertaining and everyday living. Integrated smart home connectivity ensures convenience at your fingertips, while our commitment to high-quality construction and energy efficiency guarantees a home that exceeds expectations. Embrace the sense of community at Jubilee, where neighbors become friends and lasting connections are made. Ready to experience the Stone Martin Builders difference? Schedule a visit to Jubilee and meet with our knowledgeable Sales Professionals. Explore available homes and embark on the journey to find your personal oasis in Montgomery, AL.

Prices, plans, dimensions, features, specifications, materials, and availability of homes or communities are subject to change without notice or obligation. Illustrations are artists depictions only and may differ from completed improvements. All prices subject to change without notice. Please contact your sales associate before writing an offer.



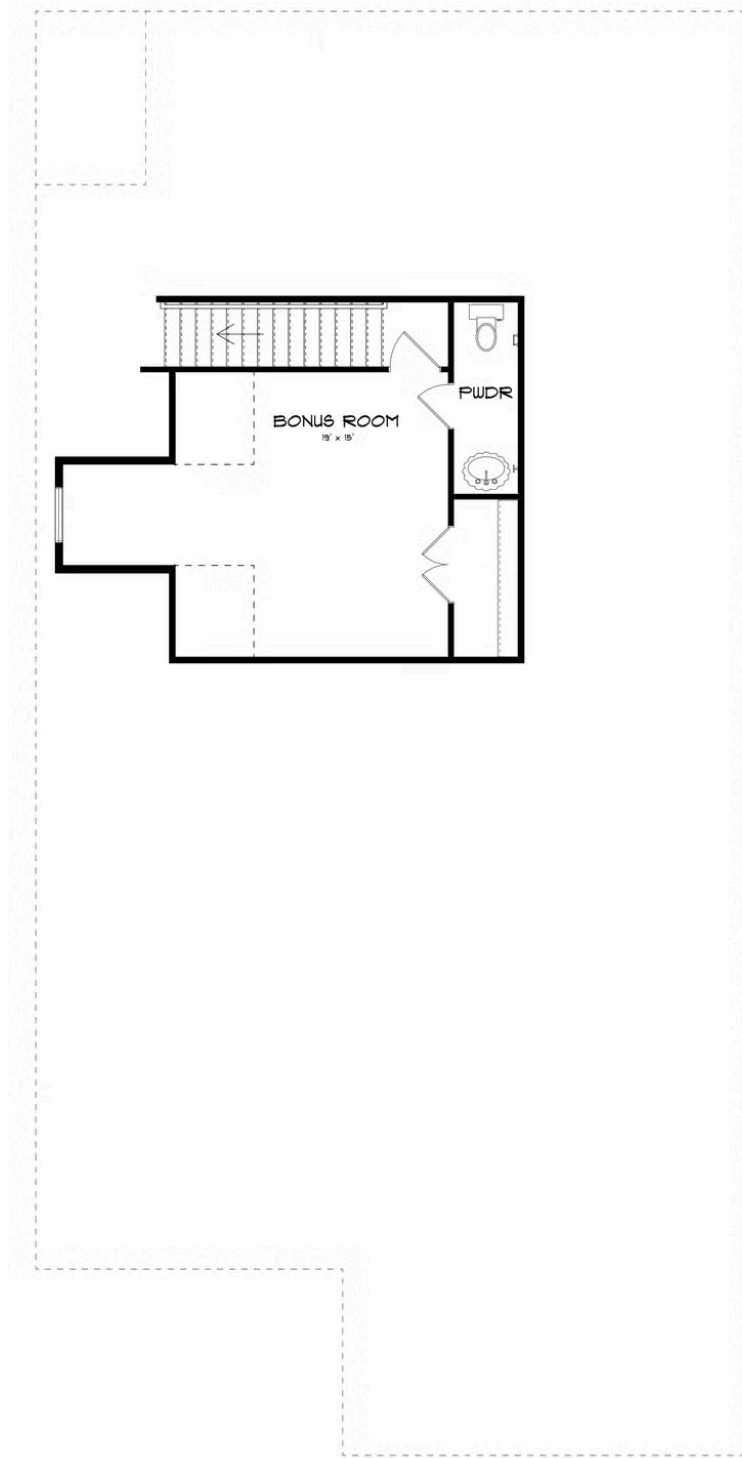
## FIRST FLOOR (C)





**STONE MARTIN**  
**BUILDERS**

## SECOND FLOOR (C)



Prices, plans, dimensions, features, specifications, materials, and availability of homes or communities are subject to change without notice or obligation. Illustrations are artists depictions only and may differ from completed improvements. All prices subject to change without notice. Please contact your sales associate before writing an offer.