



**STONE MARTIN  
BUILDERS**



**393 Anna Dora Way  
Meridianville, AL 35759  
Whitaker Landing**

**\$495,959**

**Plan: Cunningham**

**SQ FT: 3,089**

**Beds: 5**

**Baths: 3.0**

**Garage: 2**

## ABOUT THIS HOUSE

The "Cunningham" floorplan features cunning details that will have you falling in love with this plan. The "Cunningham" boasts two entrances, one through the garage to the mudroom and one through the large, covered porch to the foyer. The foyer leads directly into the all-in-one kitchen, great room and dining room. The open-concept is a dream for entertaining or spending quality time together. The primary retreat off of the kitchen features a luxurious primary bathroom and two extensive walk-in closets. With two vanities on either side of the primary bathroom, you will never be fighting for counter space or elbow room. The upstairs flaunts a unique design with a loft, two bedrooms and a sweeping bonus room/bedroom. Need more space for a playroom? Make it a bonus room! Need a little more guest room or family room? Make it a bedroom and sitting area! The "Cunningham" floorplan offers endless possibilities to cater your house to your needs.

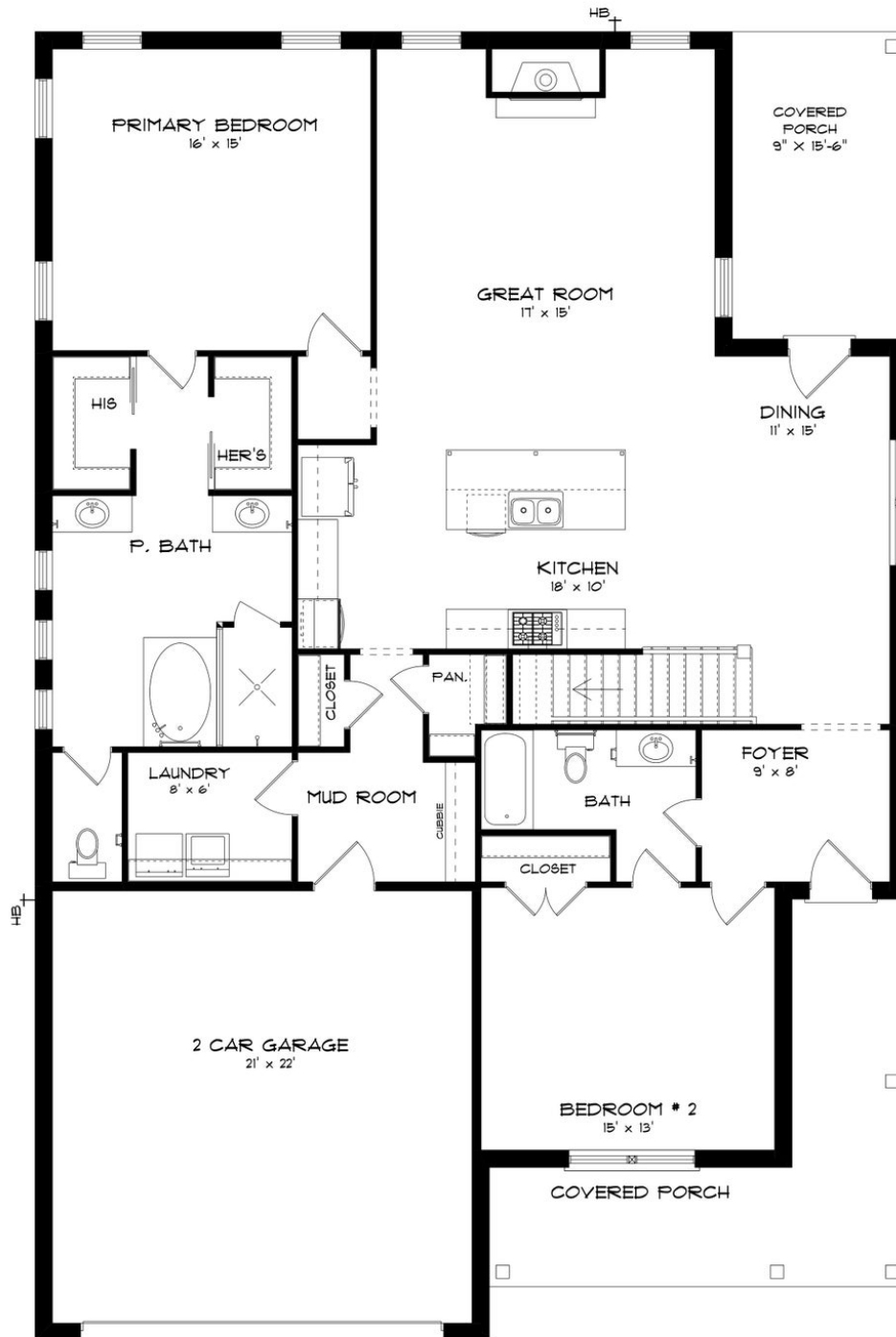
## ABOUT WHITAKER LANDING

Discover your true escape at Whitaker Landing, an idyllic retreat crafted by Stone Martin Builders. This new home community welcomes you with spacious floorplans and thoughtful design details that redefine the meaning of homes. Unwind in style at Whitaker Landing, boasting a community pool and cabana—your haven for relaxation. Whether it's soaking up the sun on a hot summer day or taking a peaceful stroll around the community, every moment becomes an opportunity to embrace tranquility. Nestled in Meridianville, part of Madison County, off the Parkway 231 and Steger Road, Whitaker Landing is your oasis with all the dream amenities. Experience the luxury of a natural gas tankless hot water heater, granite counters, a full tile shower in the ensuite primary bathroom, and more—all showcasing the meticulous craftsmanship of Stone Martin Builders. Step into your gourmet kitchen, the heart of your home, where functionality meets elegance. Thoughtfully designed for both culinary creativity and stylish gatherings, these kitchens become the epicenter of family life. Whitaker Landing is equipped with integrated smart home connectivity, elevating your living experience with modern technology seamlessly woven into the fabric of your home. From energy-efficient features to high-quality construction, every detail reflects a commitment to excellence. Ready to experience the Stone Martin Builders difference? Schedule a visit to Whitaker Landing and consult with our knowledgeable Sales Prof...

Prices, plans, dimensions, features, specifications, materials, and availability of homes or communities are subject to change without notice or obligation. Illustrations are artists depictions only and may differ from completed improvements. All prices subject to change without notice. Please contact your sales associate before writing an offer.



## FIRST FLOOR (D)



Prices, plans, dimensions, features, specifications, materials, and availability of homes or communities are subject to change without notice or obligation. Illustrations are artists depictions only and may differ from completed improvements. All prices subject to change without notice. Please contact your sales associate before writing an offer.



## SECOND FLOOR (D)

