



**STONE MARTIN
BUILDERS**



**389 Anna Dora Way
Meridianville, AL 35759
Whitaker Landing**

\$415,309

Plan: Sherfield

SQ FT: 2,372

Beds: 3

Baths: 3.0

Garage: 2

ABOUT THIS HOUSE

Designed to fit any lifestyle, the "Sherfield" floor plan features distinct spaces while maintaining an open flow. Open and appealing, the foyer gives a sense of grandeur for establishing a classic look to this home. The fabulous primary bedroom is unusually spacious for a home of this size and will accommodate heavy furniture along with plenty of storage in the walk in closet. A dynamic great room with vaulted beamed ceiling combines style and functionality with its attention to use of living space. Entertain or simply prepare daily evening meals in this cook's kitchen with an abundance of granite counter space. No need to worry about the automobile storage, as this plan comes equipped with a two car garage. Finally two large bedrooms and an upstairs bonus room with a full bathroom attached complete this plan that provides the space and storage for growing families or simply entertaining guests.

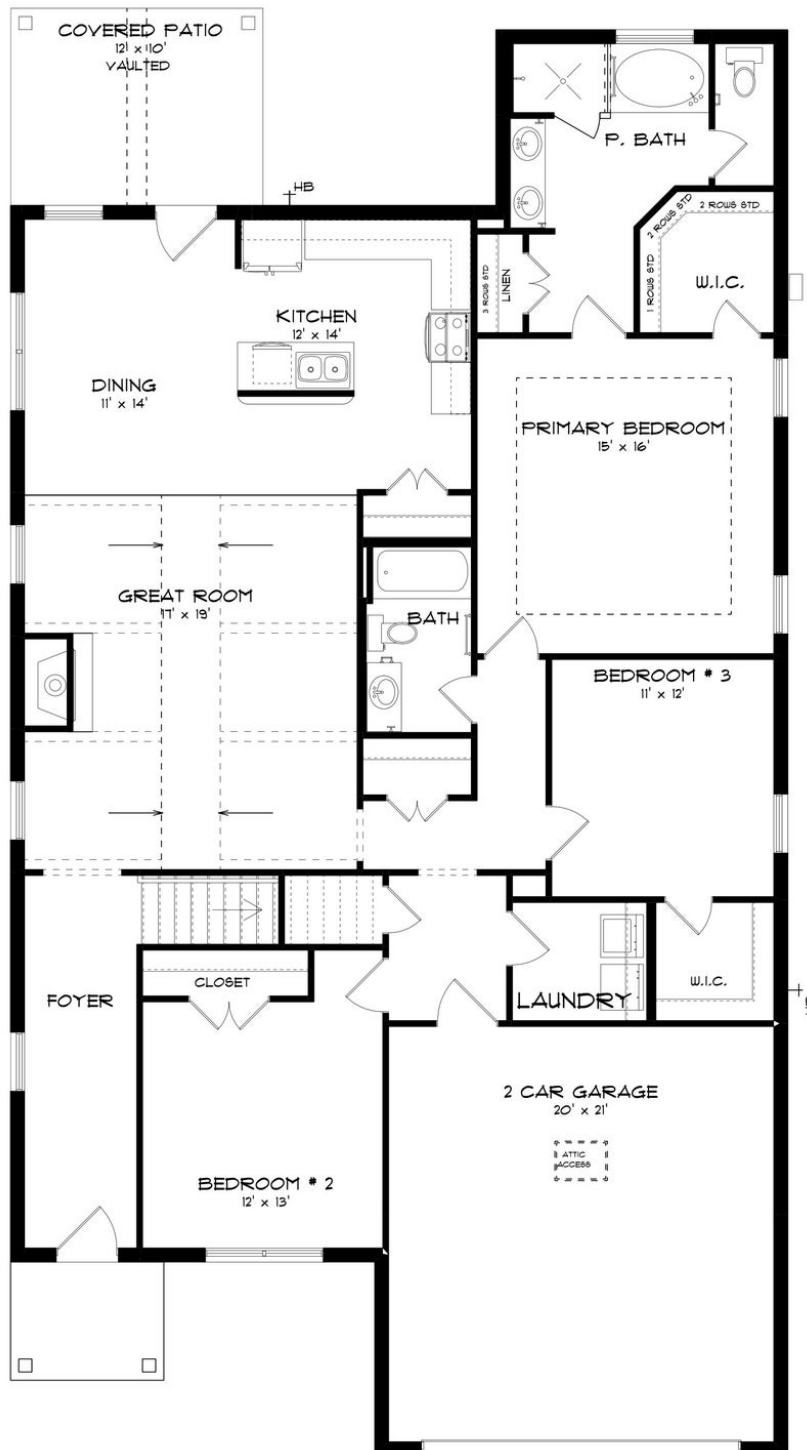
ABOUT WHITAKER LANDING

Discover your true escape at Whitaker Landing, an idyllic retreat crafted by Stone Martin Builders. This new home community welcomes you with spacious floorplans and thoughtful design details that redefine the meaning of homes. Unwind in style at Whitaker Landing, boasting a community pool and cabana—your haven for relaxation. Whether it's soaking up the sun on a hot summer day or taking a peaceful stroll around the community, every moment becomes an opportunity to embrace tranquility. Nestled in Meridianville, part of Madison County, off the Parkway 231 and Steger Road, Whitaker Landing is your oasis with all the dream amenities. Experience the luxury of a natural gas tankless hot water heater, granite counters, a full tile shower in the ensuite primary bathroom, and more—all showcasing the meticulous craftsmanship of Stone Martin Builders. Step into your gourmet kitchen, the heart of your home, where functionality meets elegance. Thoughtfully designed for both culinary creativity and stylish gatherings, these kitchens become the epicenter of family life. Whitaker Landing is equipped with integrated smart home connectivity, elevating your living experience with modern technology seamlessly woven into the fabric of your home. From energy-efficient features to high-quality construction, every detail reflects a commitment to excellence. Ready to experience the Stone Martin Builders difference? Schedule a visit to Whitaker Landing and consult with our knowledgeable Sales Prof...

Prices, plans, dimensions, features, specifications, materials, and availability of homes or communities are subject to change without notice or obligation. Illustrations are artists depictions only and may differ from completed improvements. All prices subject to change without notice. Please contact your sales associate before writing an offer.



FIRST FLOOR (H)



Prices, plans, dimensions, features, specifications, materials, and availability of homes or communities are subject to change without notice or obligation. Illustrations are artists depictions only and may differ from completed improvements. All prices subject to change without notice. Please contact your sales associate before writing an offer.



SECOND FLOOR (H)

