



**STONE MARTIN
BUILDERS**



100 Williamette Drive

Madison, AL 35758

The Crossings at River Landing

\$447,266

Plan: Overton

SQ FT: 2,682

Beds: 4

Baths: 2.5

Garage: 2

ABOUT THIS HOUSE

The "Overton" is a 1 ½ story open floorplan with ample possibilities. This four bedroom, two and a half bath plan with bonus room begins with a refined foyer entry way that opens into a roomy living area with a vaulted ceiling. Next experience the open kitchen with large center island and adjoining dining room. The kitchen offers built in appliances, granite countertops and an expanded pantry. The primary quarters provide a large bedroom and walk in closet as well as a luxurious bathroom complete with a double granite vanity, garden/soaking tub, and tiled shower with glass door. The bonus room located upstairs includes a half bath and has plenty of possibilities as an entertainment area or extra bedroom. This layout truly is a must see!

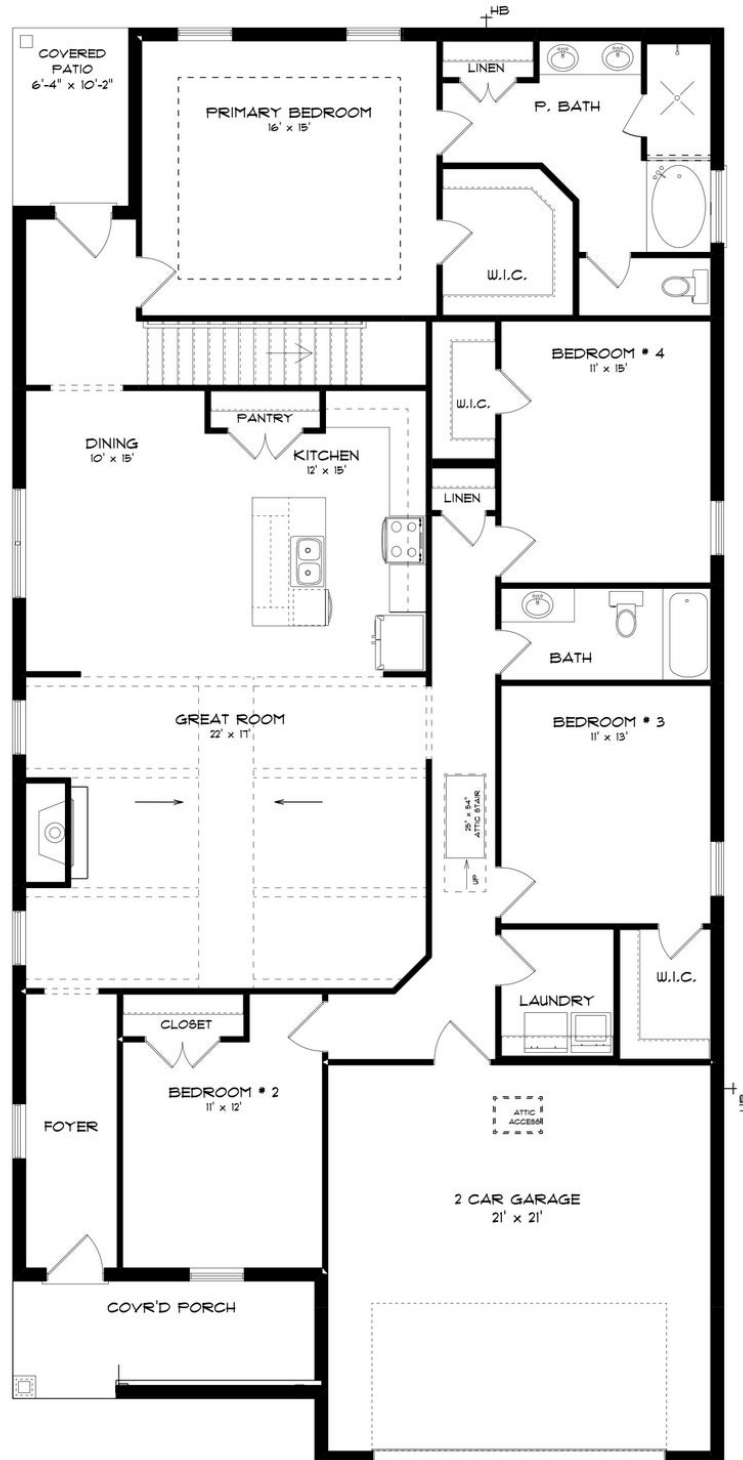
ABOUT THE CROSSINGS AT RIVER LANDING

Welcome to The Crossings at River Landing, a picturesque retreat nestled within the tranquil backdrop of Wheeler Wildlife Refuge. Experience the ideal blend of country living and modern convenience, with easy access to city amenities and a peaceful ambiance that fosters a strong sense of community. Indulge in the array of recreational amenities within the community, including a spacious main clubhouse, separate children's clubhouse, resort-style swimming pool with a separate kiddie pool, a well-appointed fitness center, two lighted tennis courts, a full-sized basketball court, and a playground. These amenities provide the optimal backdrop for neighbors to come together and forge lasting connections. With Madison City Schools nearby and endless amenities at your fingertips, The Crossings at River Landing offers the ideal setting for those seeking a vibrant community atmosphere paired with the tranquility of country living. Discover spacious floorplans and thoughtful design details meticulously crafted to enhance your living experience. Step into the future with integrated smart home connectivity, seamlessly enhancing your daily routine with modern conveniences. From climate control to advanced security features, experience the epitome of convenience at your fingertips. Ready to experience the Stone Martin difference? Schedule a visit to The Crossings at River Landing and meet with our knowledgeable Sales Professionals. Explore available homes, envision your future and embark...

Prices, plans, dimensions, features, specifications, materials, and availability of homes or communities are subject to change without notice or obligation. Illustrations are artists depictions only and may differ from completed improvements. All prices subject to change without notice. Please contact your sales associate before writing an offer.



FIRST FLOOR (C)

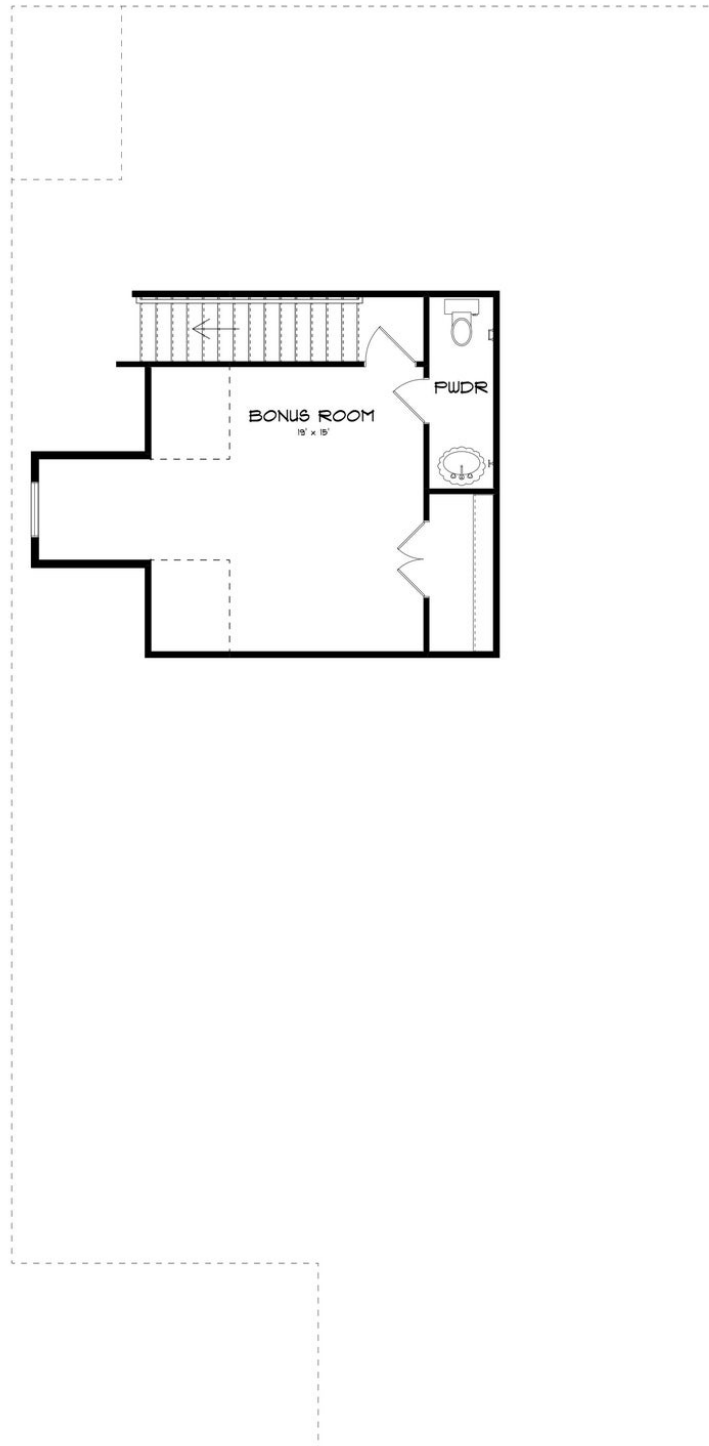


Prices, plans, dimensions, features, specifications, materials, and availability of homes or communities are subject to change without notice or obligation. Illustrations are artists depictions only and may differ from completed improvements. All prices subject to change without notice. Please contact your sales associate before writing an offer.



**STONE MARTIN
BUILDERS**

SECOND FLOOR (C)



Prices, plans, dimensions, features, specifications, materials, and availability of homes or communities are subject to change without notice or obligation. Illustrations are artists depictions only and may differ from completed improvements. All prices subject to change without notice. Please contact your sales associate before writing an offer.