



**STONE MARTIN
BUILDERS**



11385 Innocent Trail

Madison, AL 35756

Nature's Trail

\$413,319

Plan: Sherfield

SQ FT: 2,371

Beds: 3

Baths: 3.0

Garage: 2

ABOUT THIS HOUSE

Designed to fit any lifestyle, the "Sherfield" floor plan features distinct spaces while maintaining an open flow. Open and appealing, the foyer gives a sense of grandeur for establishing a classic look to this home. The fabulous primary bedroom is unusually spacious for a home of this size and will accommodate heavy furniture along with plenty of storage in the walk in closet. A dynamic great room with vaulted beamed ceiling combines style and functionality with its attention to use of living space. Entertain or simply prepare daily evening meals in this cook's kitchen with an abundance of granite counter space. No need to worry about the automobile storage, as this plan comes equipped with a two car garage. Finally two large bedrooms and an upstairs bonus room with a full bathroom attached complete this plan that provides the space and storage for growing families or simply entertaining guests.

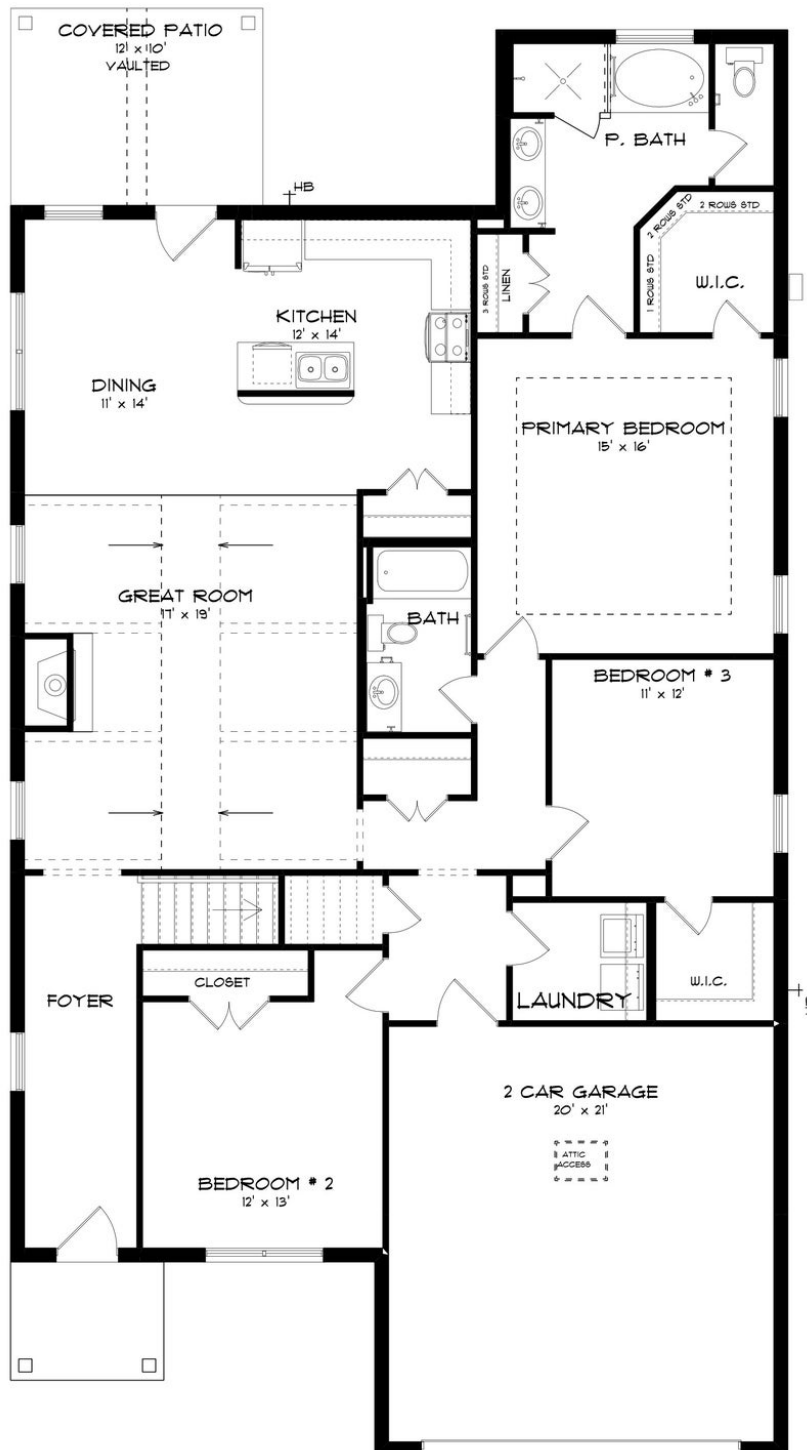
ABOUT NATURE'S TRAIL

Welcome to Nature's Trail, an idyllic retreat nestled in a serene, countryside setting. Escape the hustle and bustle and discover the tranquility of our community, where neighbors become friends and shared green spaces foster a strong sense of community. Experience quality construction that stands the test of time, paired with integrated smart home technology for modern living. From gourmet kitchens to designer-selected finishes, every detail is meticulously designed to elevate your lifestyle. Enjoy the convenience of living in a location with easy access to I-565, I-65, and Highway 72, making errands and commuting a breeze. Nature's Trail offers the perfect balance of peaceful living with convenient amenities, making it an ideal choice for those seeking a retreat from the city without sacrificing convenience. Explore the allure of new construction homes in a community designed for modern living. Ready to experience the Stone Martin Builders difference? Schedule a visit to Nature's Trail on the Flint and meet with our knowledgeable Sales Professionals. Explore available homes and embark on the journey to find your personal oasis in Huntsville, AL.

Prices, plans, dimensions, features, specifications, materials, and availability of homes or communities are subject to change without notice or obligation. Illustrations are artists depictions only and may differ from completed improvements. All prices subject to change without notice. Please contact your sales associate before writing an offer.



FIRST FLOOR (H)



Prices, plans, dimensions, features, specifications, materials, and availability of homes or communities are subject to change without notice or obligation. Illustrations are artists depictions only and may differ from completed improvements. All prices subject to change without notice. Please contact your sales associate before writing an offer.



SECOND FLOOR (H)

