



**STONE MARTIN  
BUILDERS**



**239 Arcadian Way  
Huntsville, AL 35757**

**Clift Farm**

**\$591,615**

**Plan: Bennett G**

**SQ FT: 2,676**

**Beds: 4**

**Baths: 3.5**

**Garage: 2**

## ABOUT THIS HOUSE

Indulge in the charm of the Bennett, offering 4 bedrooms, 3.5 bathrooms and a bonus room. With not one but two inviting front porches, this home is ideal for lively gatherings with neighbors and friends. Step inside to a spacious great room with a fireplace and breakfast bar flowing into the kitchen. Enjoy ample storage in the kitchen - from the pantry to cabinet space and countertops - the thoughtful design behind the heart of your home makes entertaining a breeze. The primary suite features a freestanding tub, separate shower, double vanity, and a spacious closet. Upstairs, discover 3 bedrooms, 2 bathrooms and a generously sized bonus room with access to the front porch.

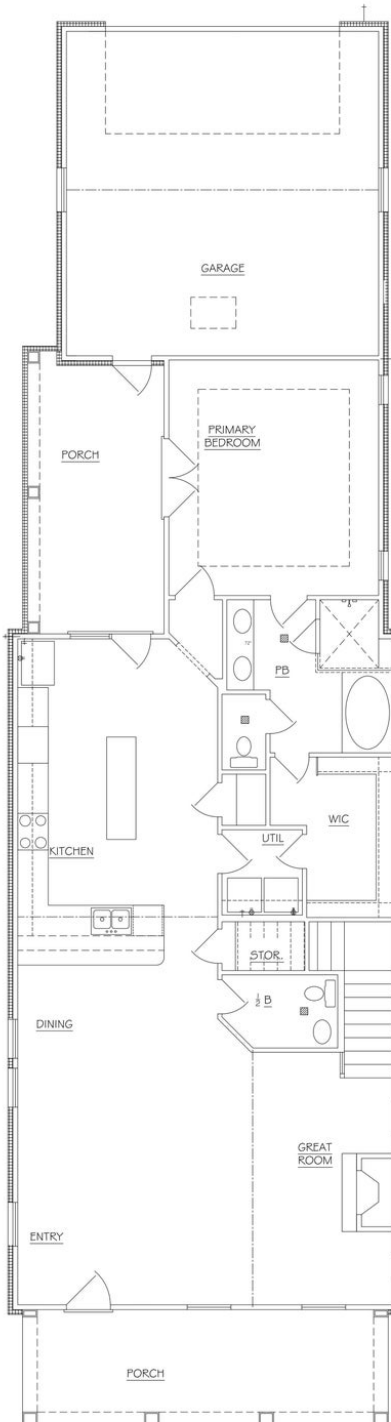
## ABOUT CLIFT FARM

Welcome to Clift Farm, a captivating blend of southern charm and modern living rooted in the century-old Clift family farm. This mixed-use haven offers new construction homes with high-end finishes, each meticulously crafted for unique lifestyles. Immerse yourself in the inviting ambiance of southern style at Clift Farm, where expansive floorplans and meticulous design details redefine the essence of home. Crafted by Stone Martin Builders, our home designs feature gourmet kitchens as functional hubs and stylish focal points—a seamless fusion of form and function. Envision a home that mirrors your style while embracing cutting-edge technology. Experience integrated smart home connectivity, enhancing daily living with modern conveniences. Enjoy the proximity to Downtown Huntsville, ensuring cultural and entertainment delights are within easy reach. Clift Farm is designed for outdoor living, boasting nature trails winding through orchards—a peaceful retreat into the beauty of nature. The clubhouse, with its gym and pool, becomes a central spot for community fun and relaxation. The retail village, anchored by Publix, brings easy convenience with restaurants, event spaces, and workplaces, adding to the lively vibe of North Alabama's sought-after community. Ready to experience the Stone Martin Builders difference? Schedule a visit to Clift Farm and consult with our knowledgeable Sales Professionals. Explore available homes, envision your future, and embark on the journey to fin...

Prices, plans, dimensions, features, specifications, materials, and availability of homes or communities are subject to change without notice or obligation. Illustrations are artists depictions only and may differ from completed improvements. All prices subject to change without notice. Please contact your sales associate before writing an offer.

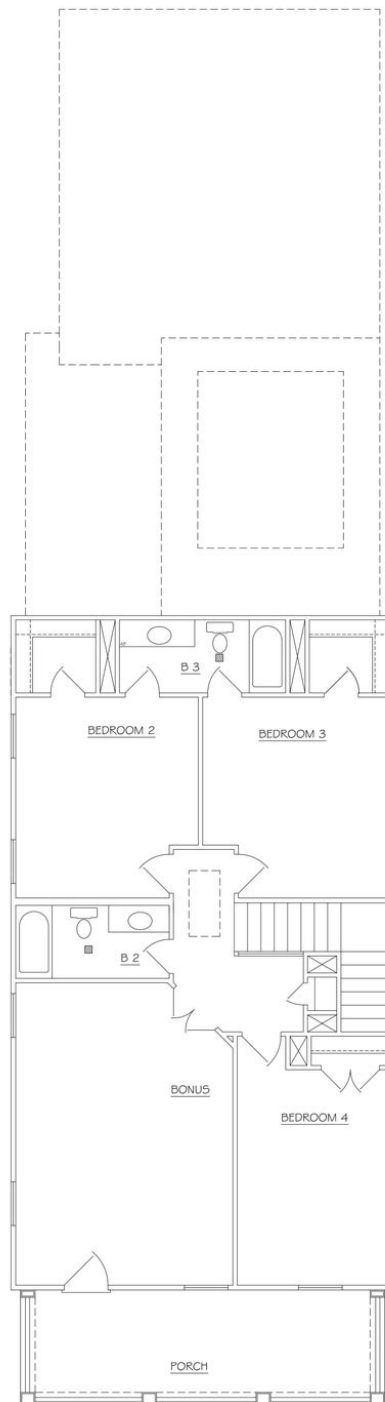


## FIRST FLOOR (G)





## SECOND FLOOR (G)



Prices, plans, dimensions, features, specifications, materials, and availability of homes or communities are subject to change without notice or obligation. Illustrations are artists depictions only and may differ from completed improvements. All prices subject to change without notice. Please contact your sales associate before writing an offer.