



**STONE MARTIN  
BUILDERS**



**237 Arcadian Way  
Huntsville, AL 35757**

**Clift Farm**

**\$595,784**

**Plan: Rangeley**

**SQ FT: 2,972**

**Beds: 4**

**Baths: 3.5**

**Garage: 2**

## ABOUT THIS HOUSE

The "Rangeley" is the perfect range of sophistication, size and design. This plan features 4 bedrooms and 3.5 bathrooms. The open great room boasts decorative, cedar wrapped beams which is open to a large kitchen. With 2 covered porches, this plan is an entertainers dream. With room for everyone, the second floor bonus room can transform into anything you need it to be. Home office, gym, or playroom? You name it. The primary bedroom and bathroom are complete with a large vanity and free standing soaker tub, the perfect relaxation retreat for you!

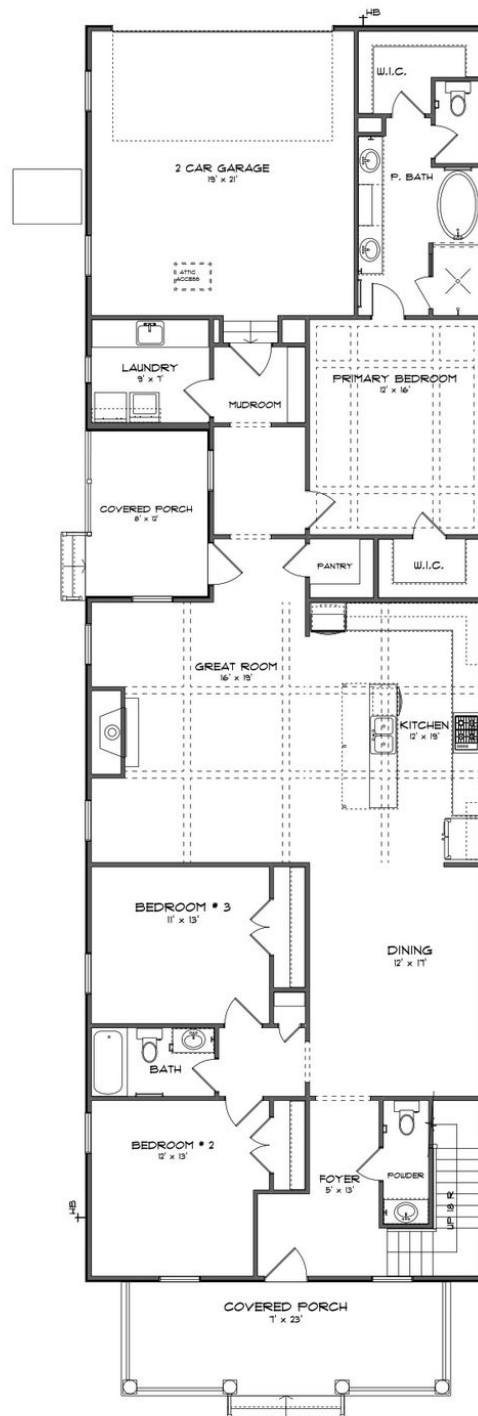
## ABOUT CLIFT FARM

Welcome to Clift Farm, a captivating blend of southern charm and modern living rooted in the century-old Clift family farm. This mixed-use haven offers new construction homes with high-end finishes, each meticulously crafted for unique lifestyles. Immerse yourself in the inviting ambiance of southern style at Clift Farm, where expansive floorplans and meticulous design details redefine the essence of home. Crafted by Stone Martin Builders, our home designs feature gourmet kitchens as functional hubs and stylish focal points—a seamless fusion of form and function. Envision a home that mirrors your style while embracing cutting-edge technology. Experience integrated smart home connectivity, enhancing daily living with modern conveniences. Enjoy the proximity to Downtown Huntsville, ensuring cultural and entertainment delights are within easy reach. Clift Farm is designed for outdoor living, boasting nature trails winding through orchards—a peaceful retreat into the beauty of nature. The clubhouse, with its gym and pool, becomes a central spot for community fun and relaxation. The retail village, anchored by Publix, brings easy convenience with restaurants, event spaces, and workplaces, adding to the lively vibe of North Alabama's sought-after community. Ready to experience the Stone Martin Builders difference? Schedule a visit to Clift Farm and consult with our knowledgeable Sales Professionals. Explore available homes, envision your future, and embark on the journey to fin...

Prices, plans, dimensions, features, specifications, materials, and availability of homes or communities are subject to change without notice or obligation. Illustrations are artists depictions only and may differ from completed improvements. All prices subject to change without notice. Please contact your sales associate before writing an offer.



## FIRST FLOOR (A)



Prices, plans, dimensions, features, specifications, materials, and availability of homes or communities are subject to change without notice or obligation. Illustrations are artists depictions only and may differ from completed improvements. All prices subject to change without notice. Please contact your sales associate before writing an offer.



## SECOND FLOOR (A)

