



**STONE MARTIN
BUILDERS**



**165 Whitner Drive
Hazel Green, AL 35750
Townsend Farm**

\$292,799

Plan: Thrive Allagash

SQ FT: 2,112

Beds: 4

Baths: 2.0

Garage: 2

ABOUT THIS HOUSE

The "Allagash" floorplan includes 4 bedrooms and 2 bathrooms. A covered porch leads directly into the cozy foyer, which opens to the kitchen, dining and great room. This functional floorplan offers a seamless flow for entertaining or everyday life. The laundry room is accessible for the garage, making it a breeze to keep the house clean. It is also located near the front of the house for convenience. The primary retreat is located in the back of the house for complete privacy. Featuring a large walk-in closet, double-vanity and vinyl luxury floor tile, the primary creates a luxurious escape. The other three bedrooms complete the opposite side of the house and share a centrally located bathroom.

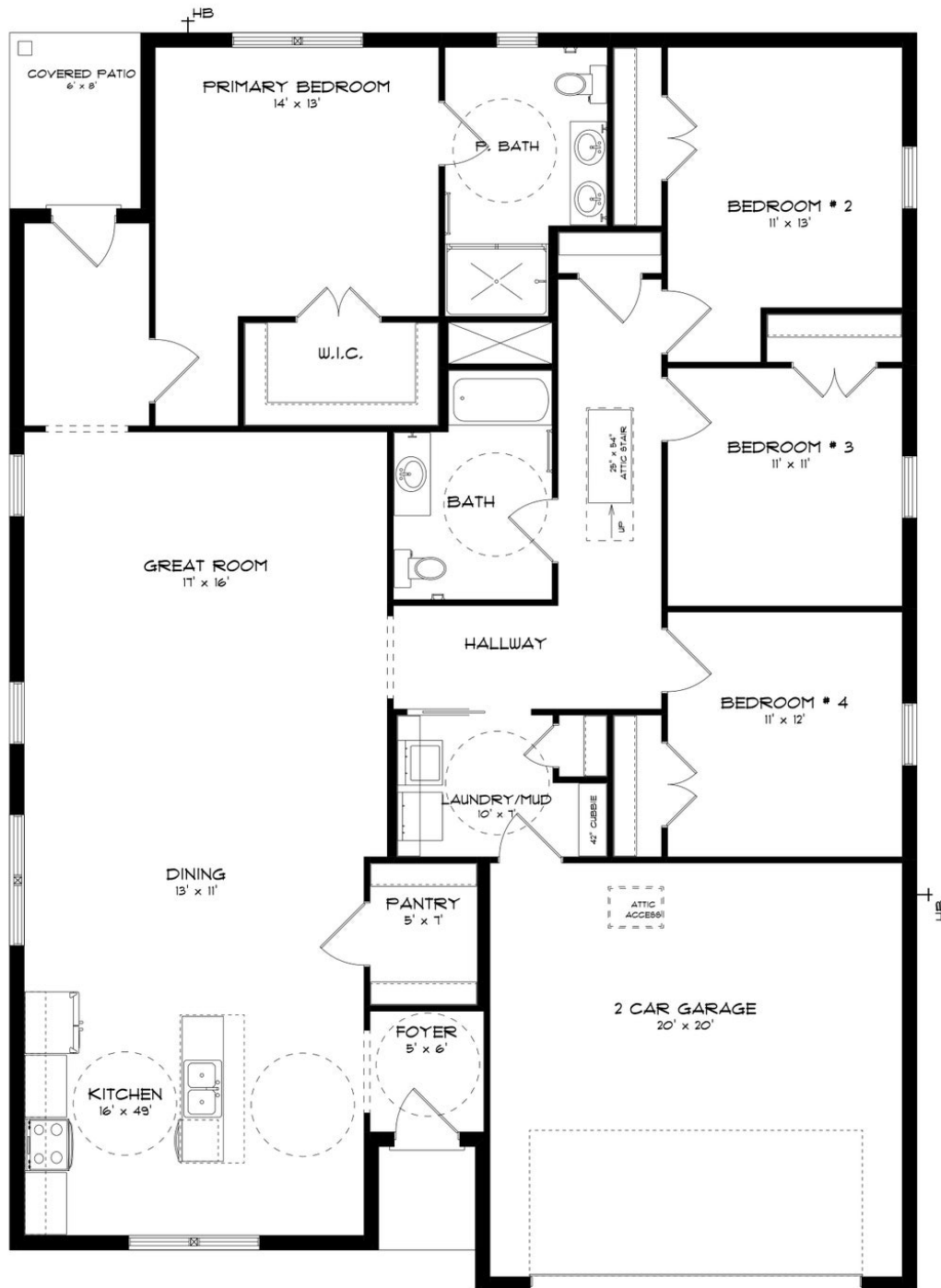
ABOUT TOWNSEND FARM

Nestled in the heart of Hazel Green, Townsend Farm welcomes you to a unique blend of small-town charm and city convenience. Conveniently situated off Highway 231/431, this community offers the perfect balance of tranquility and accessibility. Enjoy the best of both worlds with Townsend Farm. Experience the warmth of a small-town atmosphere while being just moments away from shops, restaurants, and the bustling medical district. It's the ideal location for those seeking a peaceful retreat without sacrificing city conveniences. Embrace the leisurely pace of life at Townsend Farm. Surround yourself with quiet surroundings, indulge in a round of golf at the nearby links, or plan memorable family outings to the renowned Tate Farms. Choose from our well-designed ranch plans, tailored to provide comfort and solace after a long day. Whether you're starting a family or seeking a tranquil haven, Townsend Farm is the perfect community for your new home. Ready to experience the Stone Martin Builders difference? Schedule a visit to Townsend Farm and meet with our knowledgeable Sales Professionals. Explore available homes, envision your future, and embark on the journey to find your dream home in Hazel Green, AL.

Prices, plans, dimensions, features, specifications, materials, and availability of homes or communities are subject to change without notice or obligation. Illustrations are artists depictions only and may differ from completed improvements. All prices subject to change without notice. Please contact your sales associate before writing an offer.



ELEVATION A



Prices, plans, dimensions, features, specifications, materials, and availability of homes or communities are subject to change without notice or obligation. Illustrations are artists depictions only and may differ from completed improvements. All prices subject to change without notice. Please contact your sales associate before writing an offer.