



**STONE MARTIN
BUILDERS**



**106 Hunters Hill Way
Enterprise, AL 36330
Hunter's Hill**

\$330,949

Plan: Kendrick

SQ FT: 1,908

Beds: 3

Baths: 2.0

Garage: 2

ABOUT THIS HOUSE

Simplistic and sensational, the "Kendrick" design offers fine details, all on one level with its attention to comfort and highly appealing use of space. Impressive great room with vaulted beamed ceiling and expansive space that offers a pleasant spot for family time or entertaining guests. Perfectly centered to the great room allowing open yet defined space, the kitchen is special in every way with granite island, custom cabinetry, and hardwood flooring. Separate primary suite allows privacy for the owner from the guests or other occupants of the house. Covered rear patio is great for an outdoor retreat. The two car garage completes the amenities to this all inclusive plan.

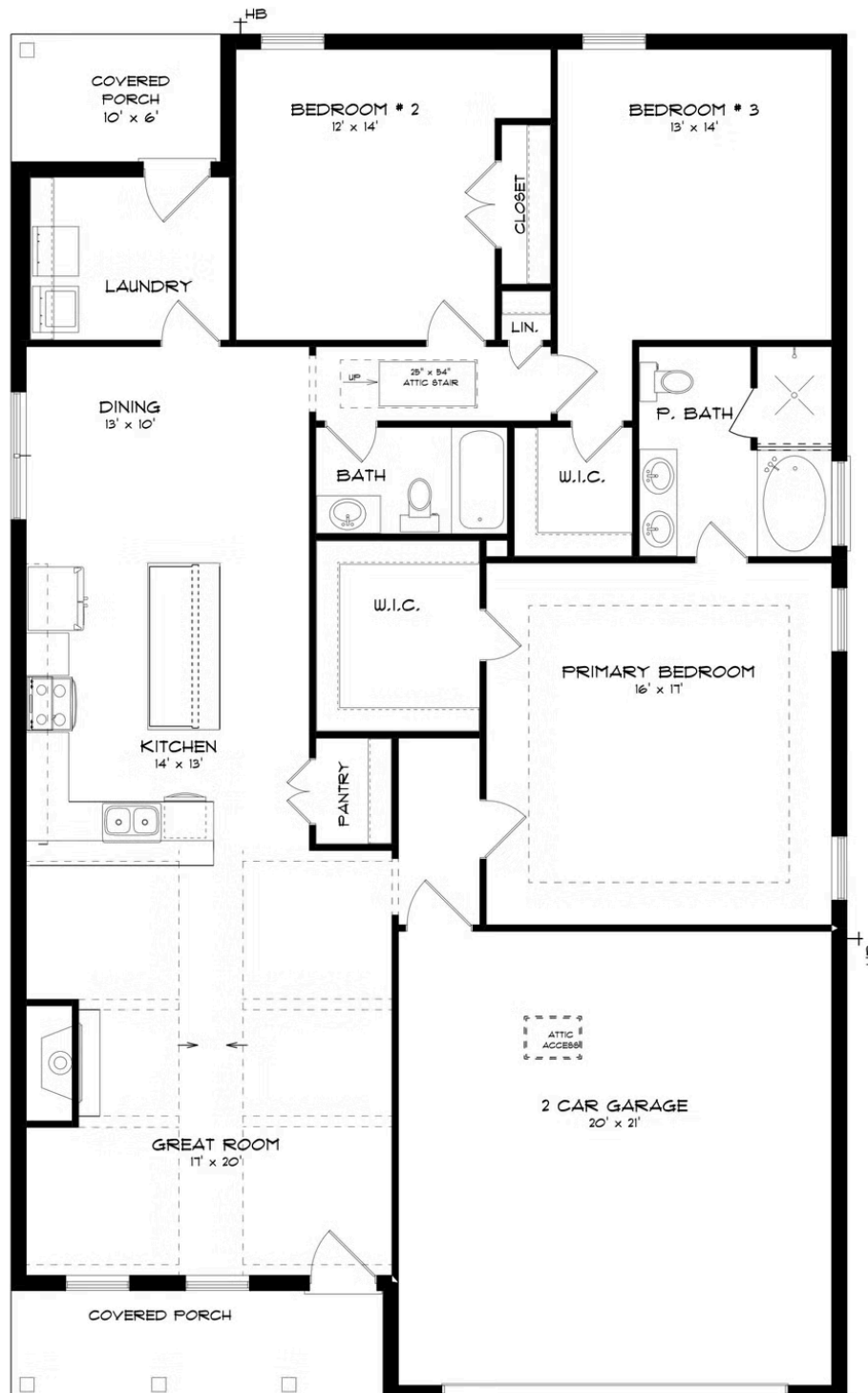
ABOUT HUNTER'S HILL

Discover the epitome of contemporary living at Hunter's Hill by Stone Martin Builders, a haven nestled in Enterprise, AL. Situated conveniently off Ozark Highway and Porter Lunsford Road, this master-planned community redefines comfort and convenience. Hunter's Hill offers an impressive array of single-family homes and townhome residences ranging from 1,900 to 3,100 square feet. A future amenity promises even more to look forward to in this vibrant community. Residents will relish the planned community pool, an inviting space to relax and unwind amidst the Alabama sunshine. Hunter's Hill is mere minutes away from essential amenities such as hospitals, shopping centers, schools, dining, and entertainment options. The community's proximity to Fort Novosel U.S. Army post—a short drive away—serves as a testament to the community's accessibility. Experience the pinnacle of modern living with integrated smart home technology, ensuring your new home adapts to your lifestyle seamlessly. Quality construction, gourmet kitchens, and designer-selected finishes add the perfect touch to elevate your living experience. Whether you're seeking a serene retreat or a bustling environment, this community seamlessly adapts to your needs. Ready to experience the Stone Martin Builders difference? Schedule a visit to Hunter's Hill and meet with our knowledgeable Sales Professionals. Explore available homes and embark on the journey to find your personal oasis in Enterprise, AL.

Prices, plans, dimensions, features, specifications, materials, and availability of homes or communities are subject to change without notice or obligation. Illustrations are artists depictions only and may differ from completed improvements. All prices subject to change without notice. Please contact your sales associate before writing an offer.



ELEVATION G



Prices, plans, dimensions, features, specifications, materials, and availability of homes or communities are subject to change without notice or obligation. Illustrations are artists depictions only and may differ from completed improvements. All prices subject to change without notice. Please contact your sales associate before writing an offer.