



**STONE MARTIN
BUILDERS**



**219 Zinnia Lane
Dothan, AL 36305
Magnolia Trace**

\$436,904

Plan: Rosewood

SQ FT: 2,751

Beds: 4

Baths: 3.0

Garage: 2

ABOUT THIS HOUSE

The Rosewood is a well-planned floor plan that is budding with four bedrooms, plus a bonus room, and three full bathrooms. The foyer opens into an expansive kitchen with a great island, granite countertops, and a pantry. The spacious kitchen flows into its own convenient breakfast area opening to a great room perfect for entertaining and comfortable living. Off the great room, bedrooms two, three, and four reside with spacious closets and a great hall connecting the bedrooms to the bath with a double vanity. Secluded at the corner of the home, the primary suite is a dream, with a huge walk in closet, spacious bedroom, and a bathroom with a soaking tub and large tiled shower. The first floor is complete with a covered porch and a two-car garage. Up the stairs, a bonus room with a walk-in closet and a full bath, is ready to serve a wide variety of purposes for your family. This plan is sure to suit the needs of your growing family.

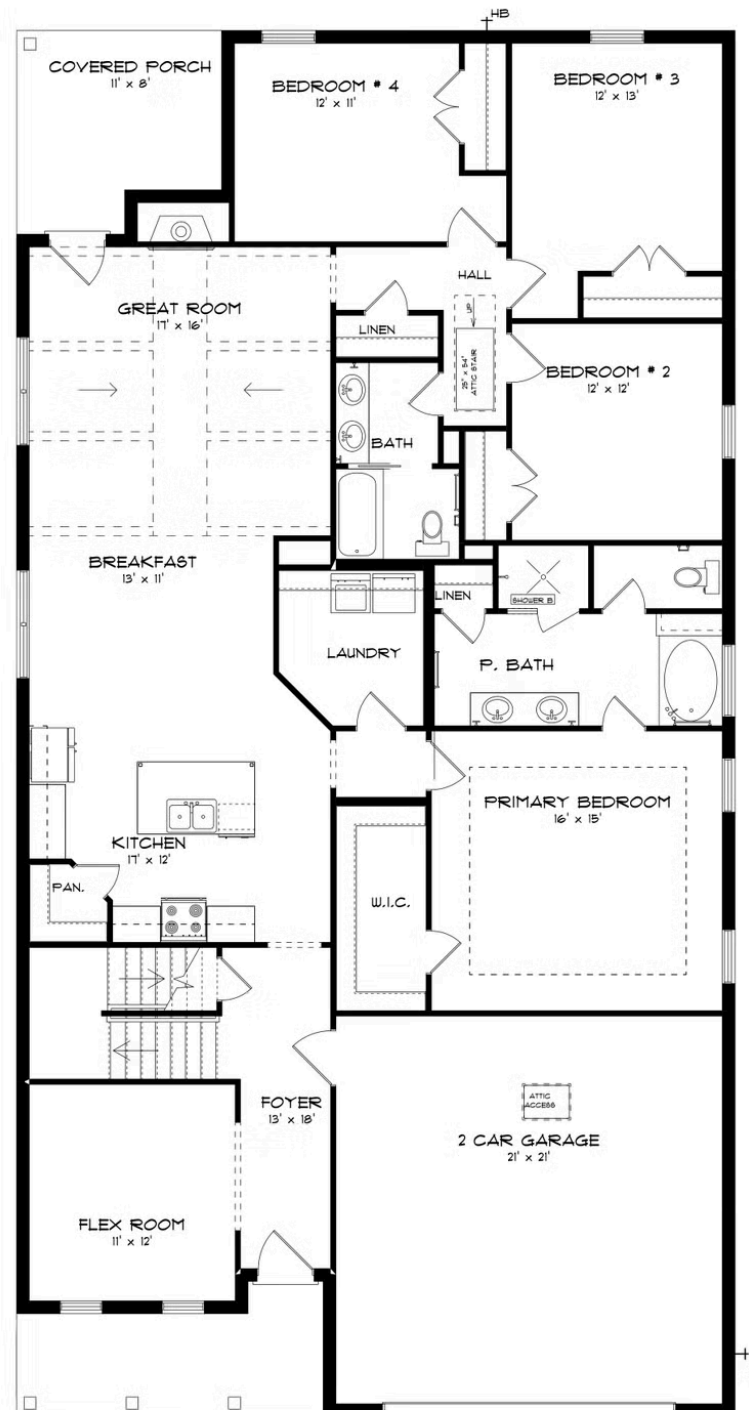
ABOUT MAGNOLIA TRACE

Welcome to Magnolia Trace, a beautiful blend of Southern charm and modern convenience in Dothan, AL. Situated off S Brannon Stand & County Line Road, this Stone Martin Builders community offers high-quality construction, gourmet kitchens, and integrated smart home technology. Residents can enjoy planned community amenities, including a playground and pool. With convenient access to Hwy 52 and nearby parks, Magnolia Trace provides the perfect setting for a vibrant, connected lifestyle. Discover spacious floorplans and thoughtful design details crafted to enhance your daily life. Gourmet kitchens, integrated smart home connectivity, and high-quality construction are hallmarks of Stone Martin Builders. Ready to experience the Stone Martin Builders difference? Schedule a visit to Magnolia Trace and consult with our knowledgeable Sales Professionals. Explore available homes, envision your future, and embark on the journey to find your ideal home in Houston County, AL. Welcome home to Magnolia Trace—where your personalized haven awaits.

Prices, plans, dimensions, features, specifications, materials, and availability of homes or communities are subject to change without notice or obligation. Illustrations are artists depictions only and may differ from completed improvements. All prices subject to change without notice. Please contact your sales associate before writing an offer.



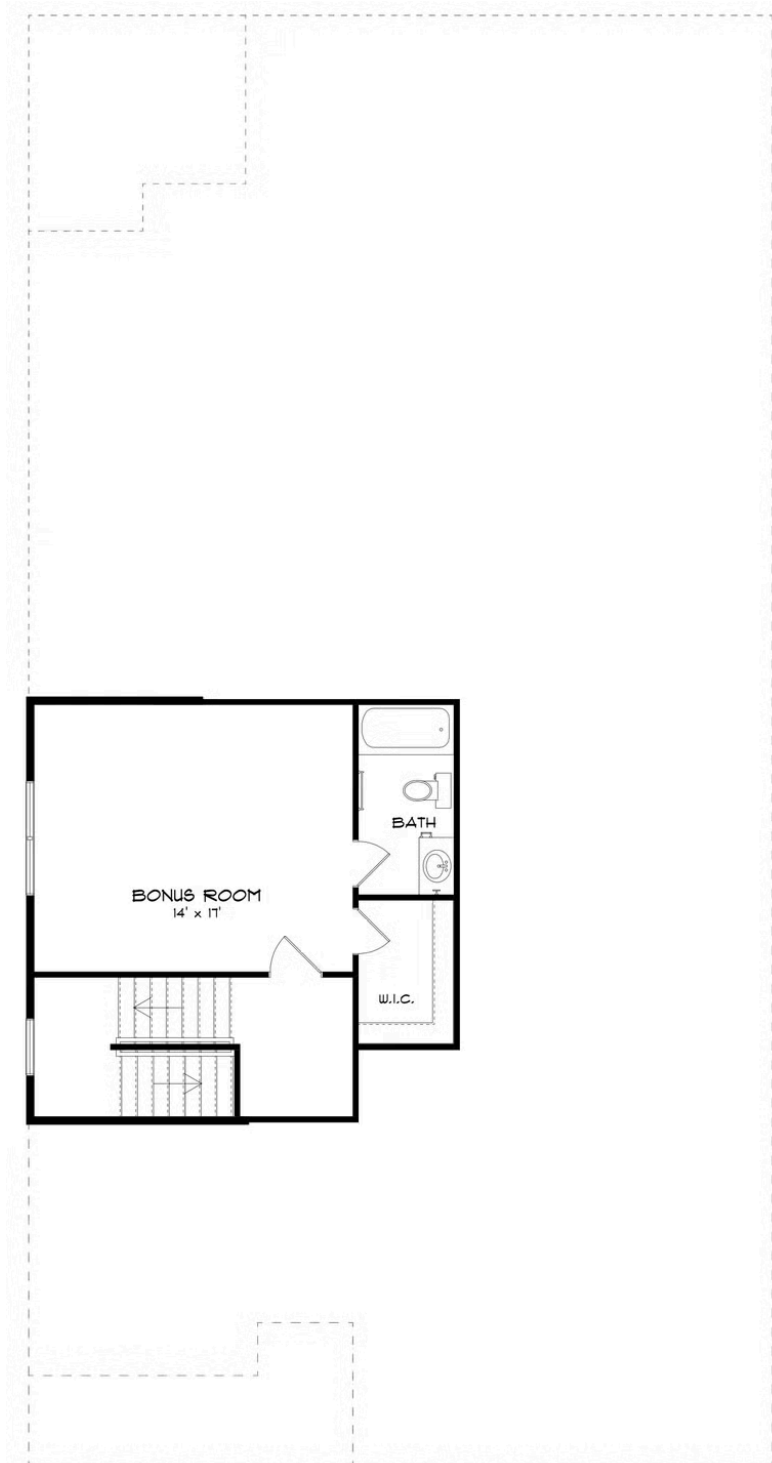
FIRST FLOOR (F)





**STONE MARTIN
BUILDERS**

SECOND FLOOR (F)



Prices, plans, dimensions, features, specifications, materials, and availability of homes or communities are subject to change without notice or obligation. Illustrations are artists depictions only and may differ from completed improvements. All prices subject to change without notice. Please contact your sales associate before writing an offer.