



**STONE MARTIN
BUILDERS**



**650 Ridgeland Road
Dothan, AL 36301
Hidden Lake East**

Plan: Thrive Fairway
SQ FT: 1,855
Beds: 3
Baths: 2.0
Garage: 2

ABOUT THIS HOUSE

The "Fairway" floorplan makes a dramatic statement. The main hub of the home is its openness from the great room, dining, and kitchen area. This well thought out home is brimming with generous in kitchen, both baths & hallways. Primary bedroom is tucked away from the other bedrooms for ultimate privacy. Carefree kitchen aims to please with massive granite counter space. Step onto the covered patio, great for entertaining, or pull into the two car garage that complete the package this this amazing plan.

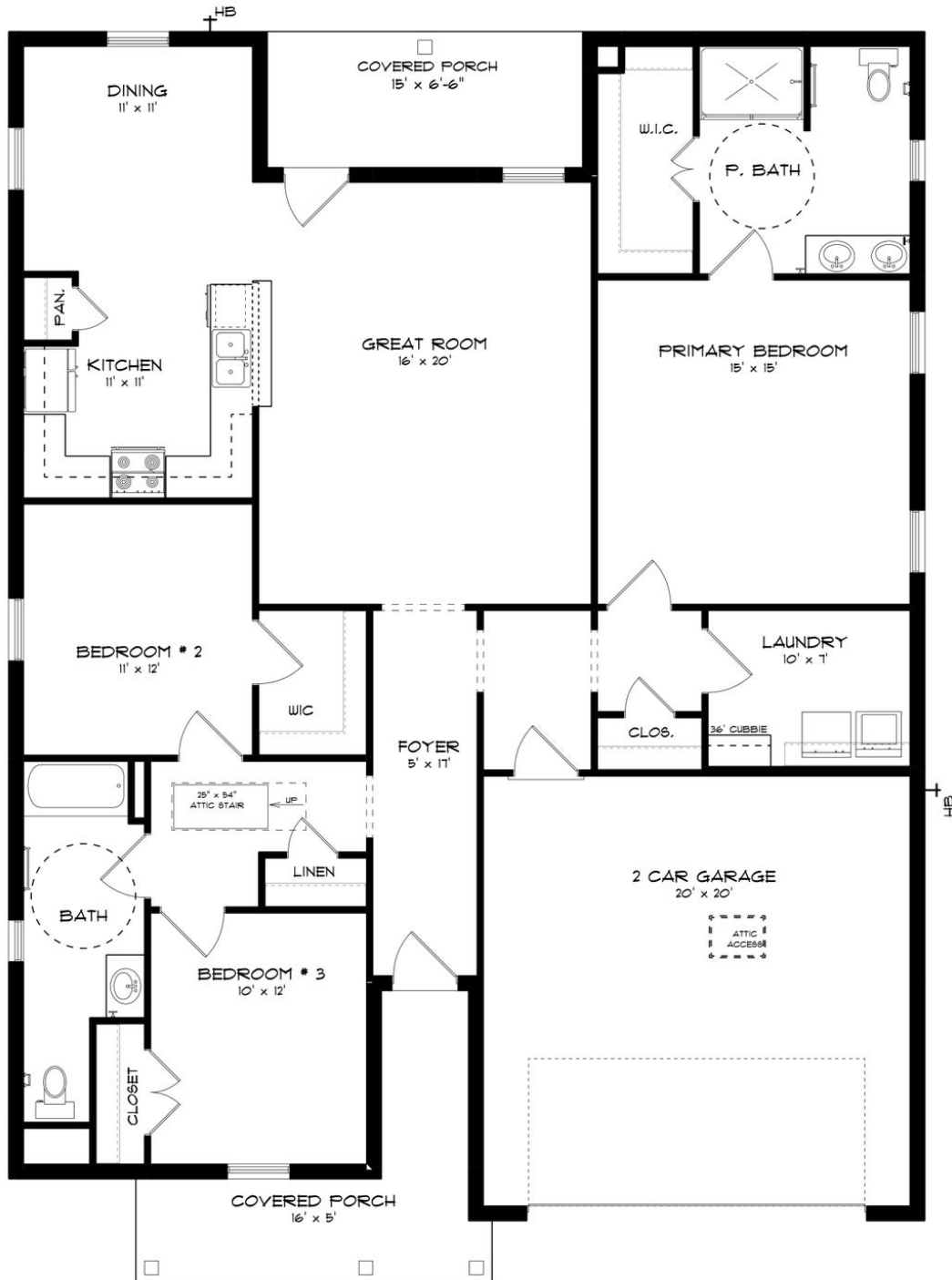
ABOUT HIDDEN LAKE EAST

Nestled amidst serene lakeside views, Hidden Lake East offers more than just a home—it offers a vibrant community atmosphere. Enjoy outdoor recreation with a beautiful lake for fishing and kayaking, alongside a lakeside playground for endless fun. Conveniently located near prominent employers and downtown Dothan's charming shops and restaurants, Hidden Lake East provides the perfect balance of tranquility and accessibility. Immerse yourself in spacious floorplans, meticulously designed to suit your lifestyle needs. Indulge in gourmet kitchens, adorned with top-of-the-line appliances and thoughtful design details. Experience the convenience of integrated smart home connectivity, seamlessly enhancing your daily routines. Our commitment to high-quality construction and energy efficiency ensures a home that stands the test of time, providing comfort and savings for years to come. Ready to experience the Stone Martin Builders difference? Schedule a visit to Hidden Lake East and meet with our knowledgeable Sales Professionals. Explore available homes and embark on the journey to find your personal oasis in Dothan, AL.

Prices, plans, dimensions, features, specifications, materials, and availability of homes or communities are subject to change without notice or obligation. Illustrations are artists depictions only and may differ from completed improvements. All prices subject to change without notice. Please contact your sales associate before writing an offer.



ELEVATION B



Prices, plans, dimensions, features, specifications, materials, and availability of homes or communities are subject to change without notice or obligation. Illustrations are artists depictions only and may differ from completed improvements. All prices subject to change without notice. Please contact your sales associate before writing an offer.