



**STONE MARTIN
BUILDERS**



617 Ridgeland Road

Dothan, AL 36301

Hidden Lake East

\$272,499

Plan: Thrive Allagash

SQ FT: 2,053

Beds: 4

Baths: 2.0

Garage: 2

ABOUT THIS HOUSE

The "Allagash" floorplan includes 4 bedrooms and 2 bathrooms. A covered porch leads directly into the cozy foyer, which opens to the kitchen, dining and great room. This functional floorplan offers a seamless flow for entertaining or everyday life. The laundry room is accessible for the garage, making it a breeze to keep the house clean. It is also located near the front of the house for convenience. The primary retreat is located in the back of the house for complete privacy. Featuring a large walk-in closet, double-vanity and vinyl luxury floor tile, the primary creates a luxurious escape. The other three bedrooms complete the opposite side of the house and share a centrally located bathroom.

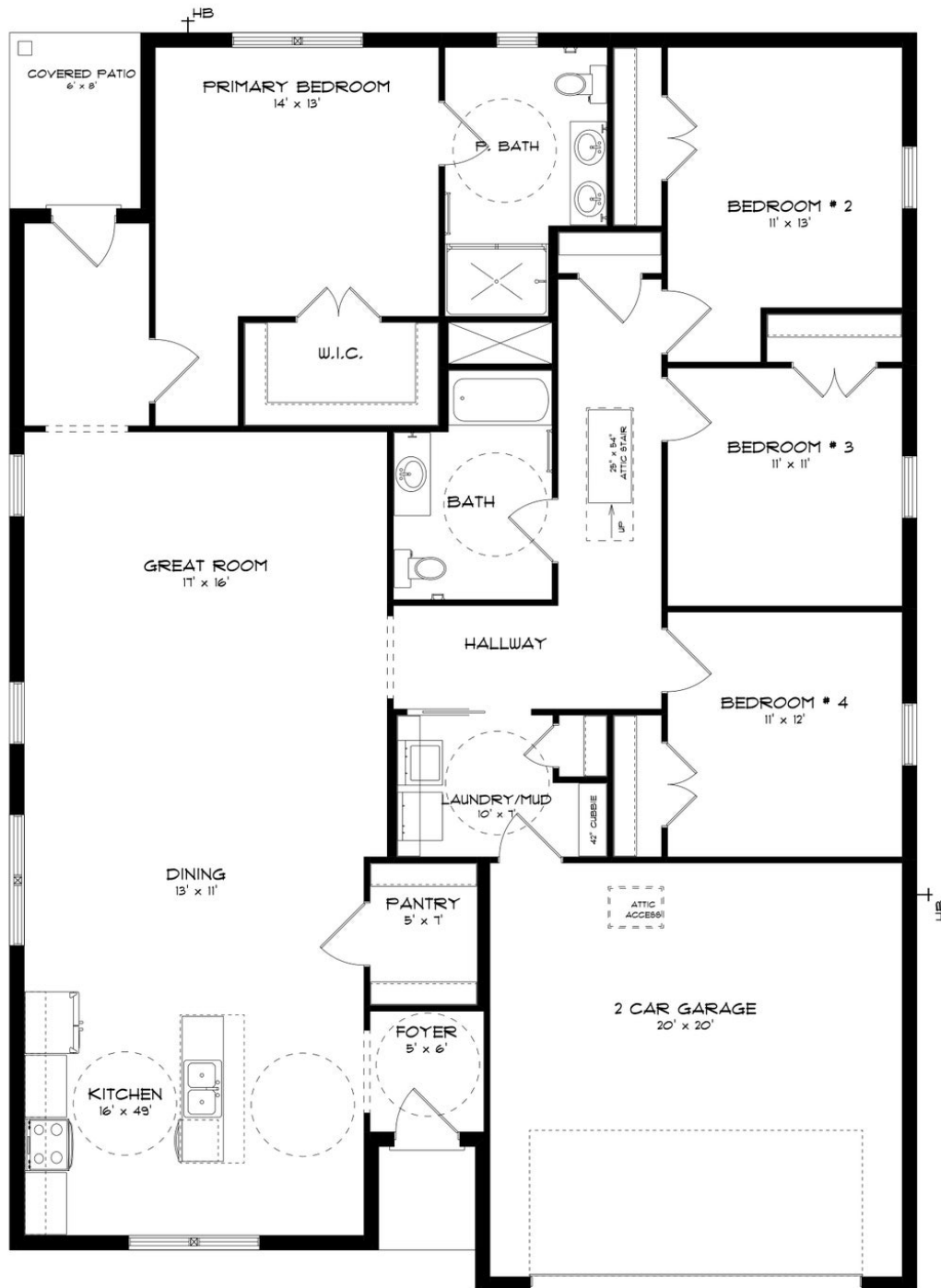
ABOUT HIDDEN LAKE EAST

Nestled amidst serene lakeside views, Hidden Lake East offers more than just a home—it offers a vibrant community atmosphere. Enjoy outdoor recreation with a beautiful lake for fishing and kayaking, alongside a lakeside playground for endless fun. Conveniently located near prominent employers and downtown Dothan's charming shops and restaurants, Hidden Lake East provides the perfect balance of tranquility and accessibility. Immerse yourself in spacious floorplans, meticulously designed to suit your lifestyle needs. Indulge in gourmet kitchens, adorned with top-of-the-line appliances and thoughtful design details. Experience the convenience of integrated smart home connectivity, seamlessly enhancing your daily routines. Our commitment to high-quality construction and energy efficiency ensures a home that stands the test of time, providing comfort and savings for years to come. Ready to experience the Stone Martin Builders difference? Schedule a visit to Hidden Lake East and meet with our knowledgeable Sales Professionals. Explore available homes and embark on the journey to find your personal oasis in Dothan, AL.

Prices, plans, dimensions, features, specifications, materials, and availability of homes or communities are subject to change without notice or obligation. Illustrations are artists depictions only and may differ from completed improvements. All prices subject to change without notice. Please contact your sales associate before writing an offer.



ELEVATION A



Prices, plans, dimensions, features, specifications, materials, and availability of homes or communities are subject to change without notice or obligation. Illustrations are artists depictions only and may differ from completed improvements. All prices subject to change without notice. Please contact your sales associate before writing an offer.