



**STONE MARTIN  
BUILDERS**



## **Cunningham Home Plan**

Starting at \$477,299

**SQ FT:** 3,089

**Beds:** 5

**Baths:** 3.0

**Garage:** 2 Standard



Elevation D



Elevation E

### **ABOUT THIS PLAN**

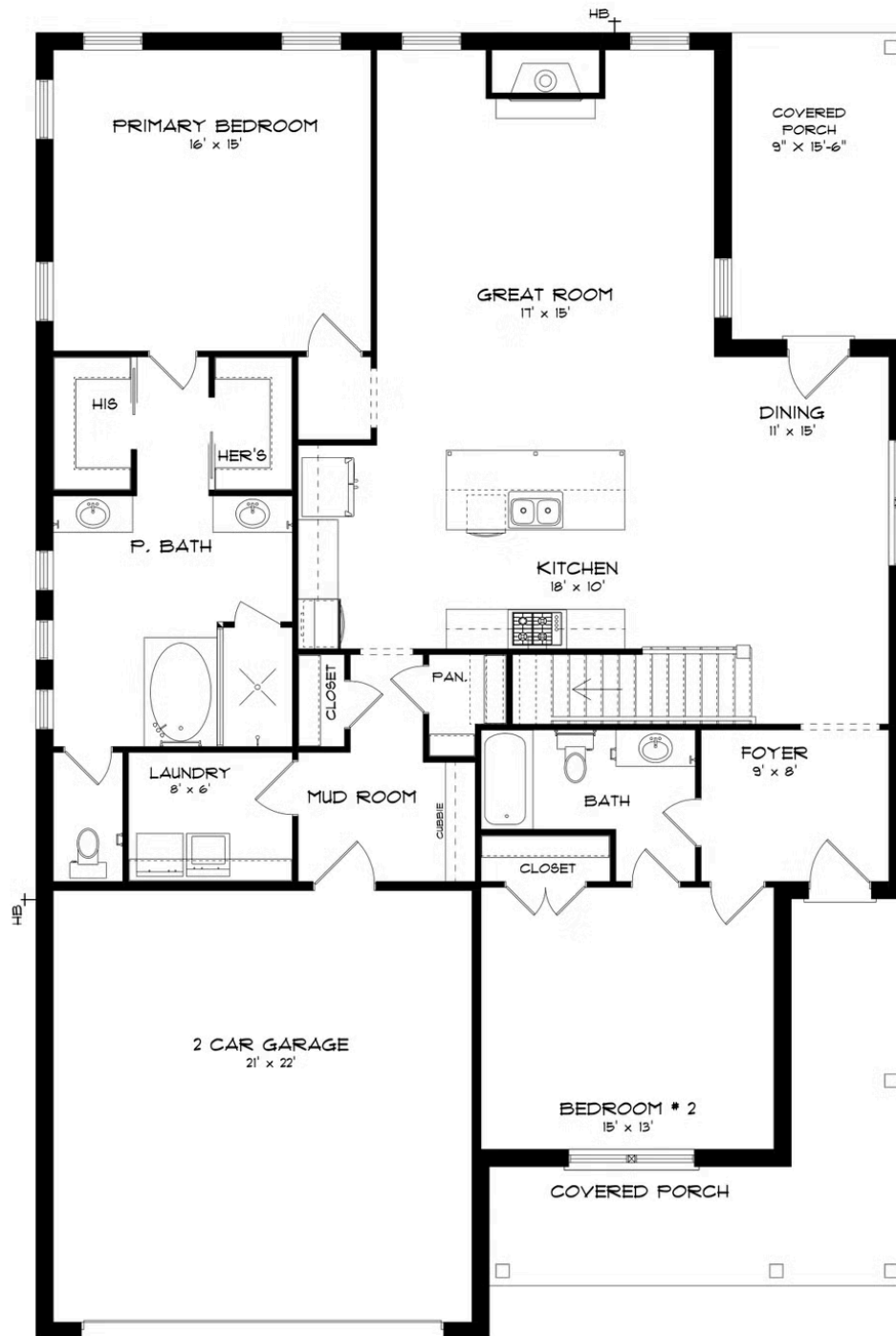
The "Cunningham" floorplan features cunning details that will have you falling in love with this plan. The "Cunningham" boasts two entrances, one through the garage to the mudroom and one through the large, covered porch to the foyer. The foyer leads directly into the all-in-one kitchen, great room and dining room. The open-concept is a dream for entertaining or spending quality time together. The primary retreat off of the kitchen features a luxurious primary bathroom and two extensive walk-in closets. With two vanities on either side of the primary bathroom, you will never be fighting for counter space or elbow room. The upstairs flaunts a unique design with a loft, two bedrooms and a sweeping bonus room/bedroom. Need more space for a playroom? Make it a bonus room! Need a little more guest room or family room? Make it a bedroom and sitting area! The "Cunningham" floorplan offers endless possibilities to cater your house to your needs.

[...Read More Online](#)

Prices, plans, dimensions, features, specifications, materials, and availability of homes or communities are subject to change without notice or obligation. Illustrations are artists depictions only and may differ from completed improvements. All prices subject to change without notice. Please contact your sales associate before writing an offer.

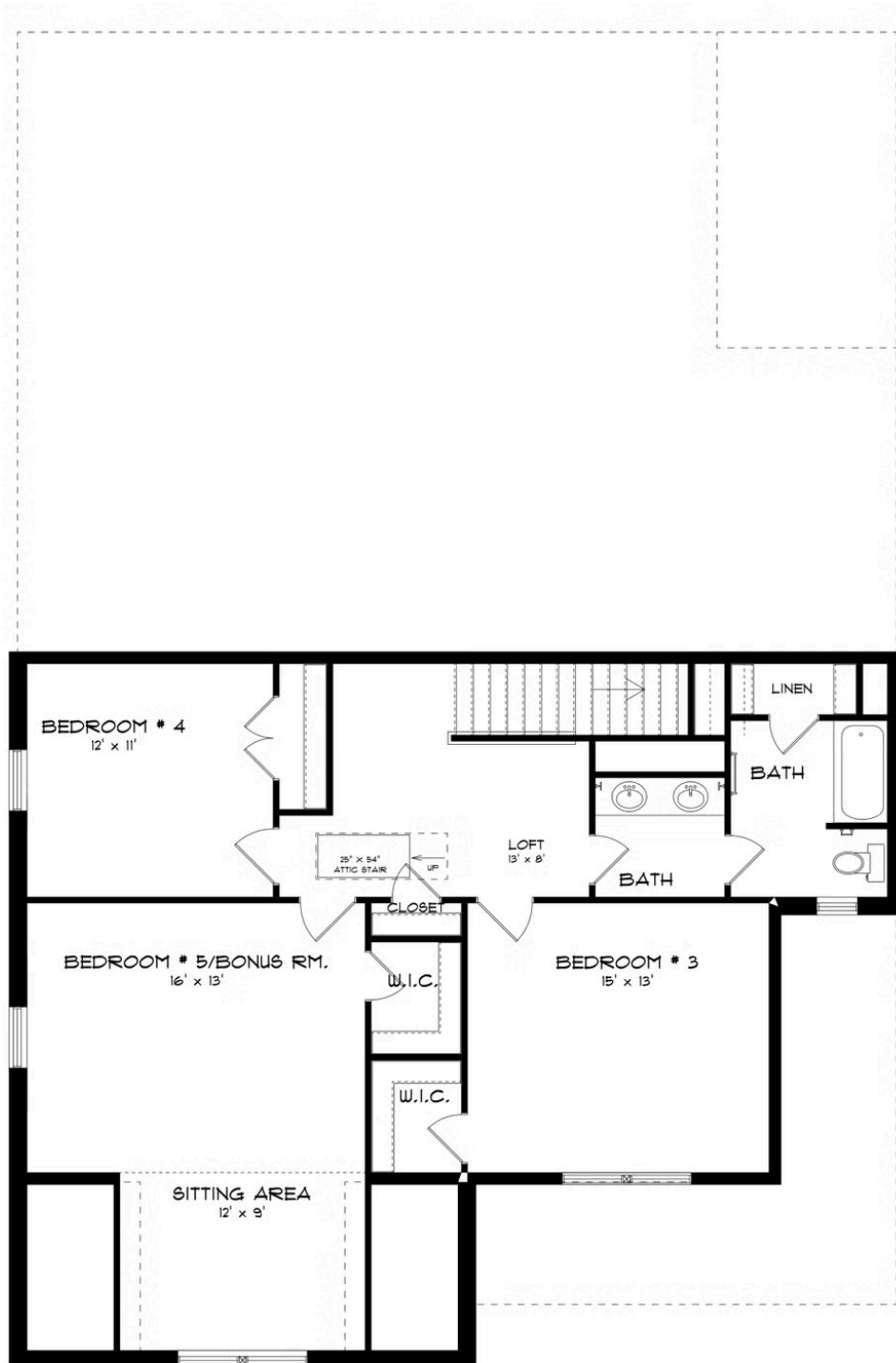


**FIRST FLOOR (D)**





**SECOND FLOOR (D)**







**STONE MARTIN  
BUILDERS**

## PLAN GALLERY



Prices, plans, dimensions, features, specifications, materials, and availability of homes or communities are subject to change without notice or obligation. Illustrations are artists depictions only and may differ from completed improvements. All prices subject to change without notice. Please contact your sales associate before writing an offer.