



**STONE MARTIN
BUILDERS**



Thrive Monterrey

Home Plan

Starting at \$289,099

SQ FT: 1,799

Beds: 3

Baths: 2.0

Garage: 2 Standard



ELEVATION A



Elevation B

ABOUT THIS PLAN

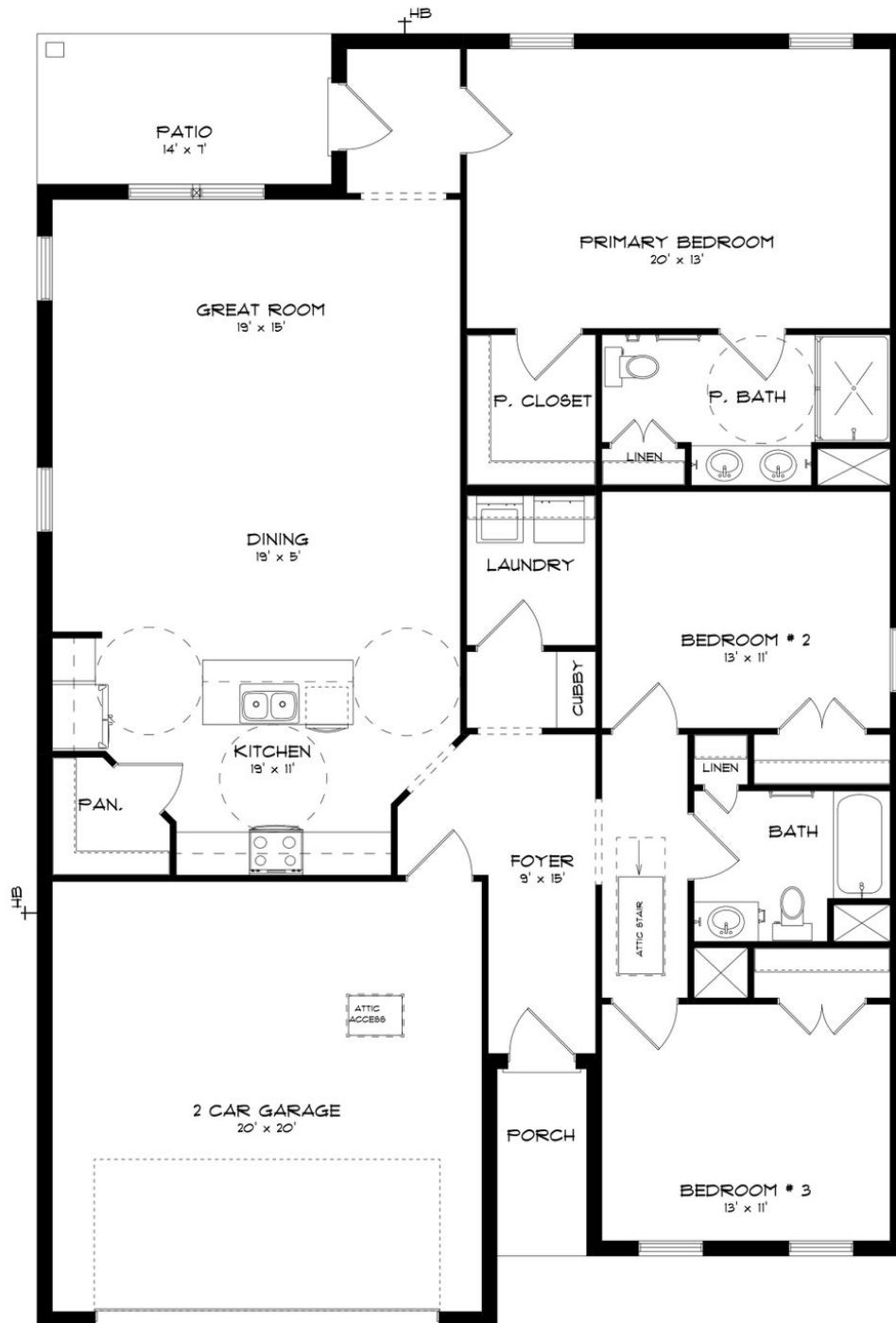
The "Monterrey" floorplan includes 3 bedrooms and 2 bathrooms. The 2-car garage opens directly into the large foyer. The "Monterrey" boasts an open concept in the dining room, great room and kitchen. Just off the great room, the primary suite creates a serene oasis complete with a walk-in closet and bathroom. With 2 other bedrooms and bathroom, this plan offers ample space for all your needs.

...Read More Online

Prices, plans, dimensions, features, specifications, materials, and availability of homes or communities are subject to change without notice or obligation. Illustrations are artists depictions only and may differ from completed improvements. All prices subject to change without notice. Please contact your sales associate before writing an offer.

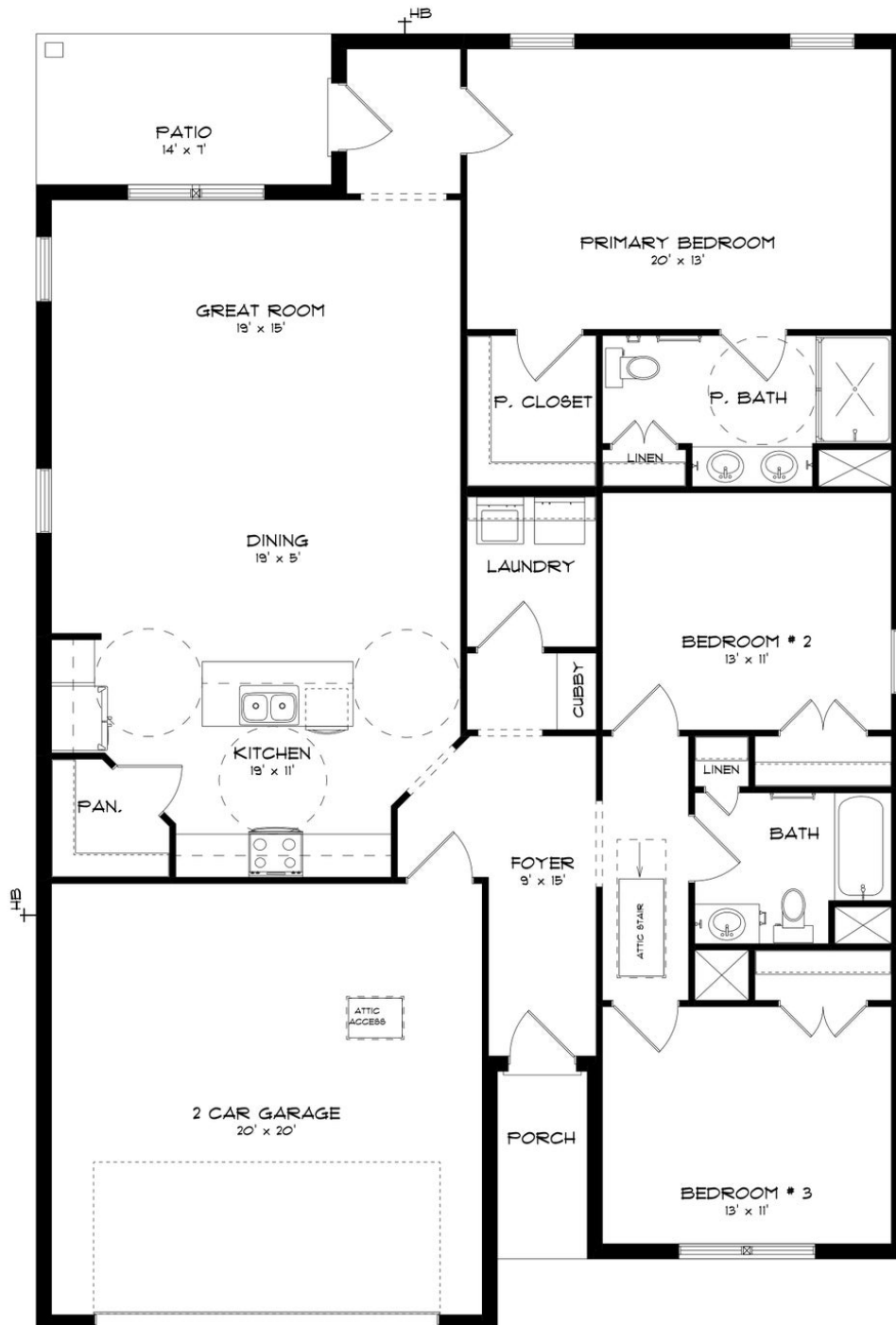


ELEVATION A





ELEVATION B





**STONE MARTIN
BUILDERS**

PLAN GALLERY



Prices, plans, dimensions, features, specifications, materials, and availability of homes or communities are subject to change without notice or obligation. Illustrations are artists depictions only and may differ from completed improvements. All prices subject to change without notice. Please contact your sales associate before writing an offer.