



**STONE MARTIN
BUILDERS**



Highland Home Plan

Starting at \$760,099

SQ FT: 4,744

Beds: 5

Baths: 3.5

Garage: 3 Standard



Elevation H



ELEVATION J

ABOUT THIS PLAN

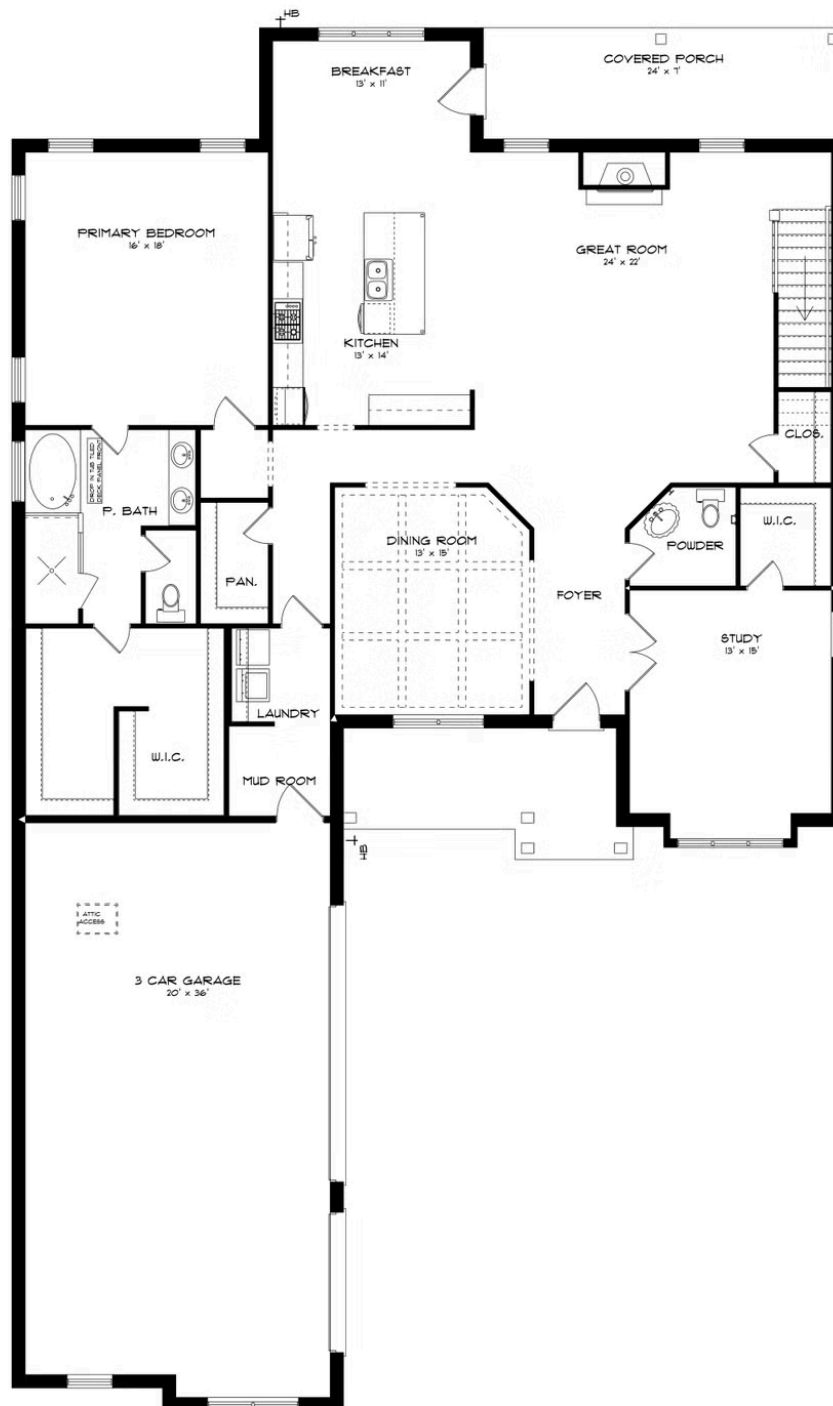
The sky is the limit in the "Highland" plan sketched for those who insist on a higher standard of living. A space for every imaginable use, this house speaks volume and comfort with a kitchen featuring a gigantic 8'x 4' granite island that opens to family/great room area. Oversized study, located on the first level provides space for a home office, nursery, or a quiet place for reading or simply relaxing. Owner's quarters boasts room for endless furniture and hails a huge walk-in closet. Separate the family to the second floor where there's a whole new dimension with bedrooms and baths that are endless as well as a highly usable loft area. Protect the interior of the house by kicking off the shoes in the convenient mud room off the garage. Ultimate price, use of space, and total utilization define this plan.

[...Read More Online](#)

Prices, plans, dimensions, features, specifications, materials, and availability of homes or communities are subject to change without notice or obligation. Illustrations are artists depictions only and may differ from completed improvements. All prices subject to change without notice. Please contact your sales associate before writing an offer.

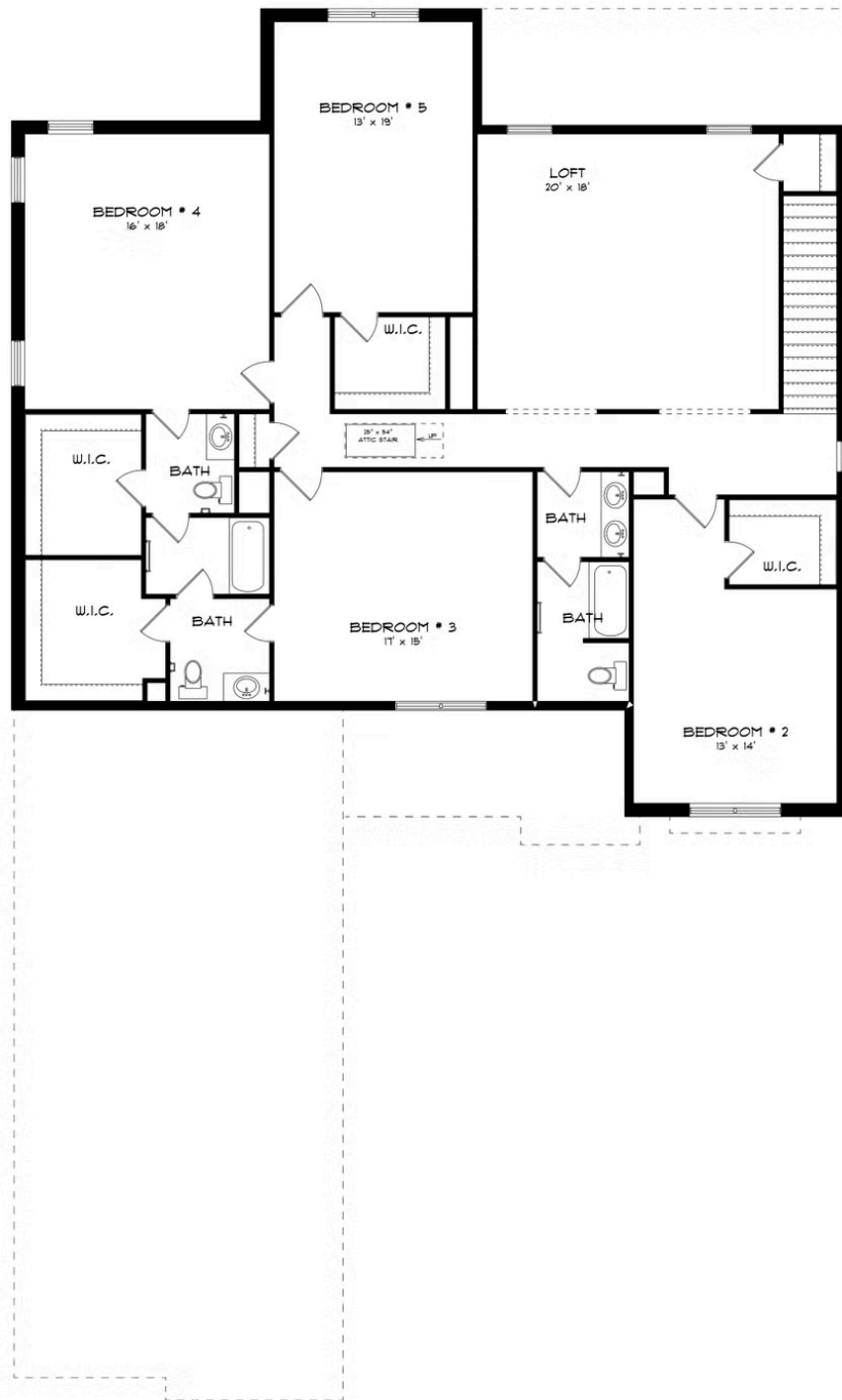


FIRST FLOOR (J-3 CAR)





SECOND FLOOR (J-3 CAR)





**STONE MARTIN
BUILDERS**

PLAN GALLERY



Prices, plans, dimensions, features, specifications, materials, and availability of homes or communities are subject to change without notice or obligation. Illustrations are artists depictions only and may differ from completed improvements. All prices subject to change without notice. Please contact your sales associate before writing an offer.