



**STONE MARTIN
BUILDERS**



Shackleford

Home Plan

Starting at \$517,499

SQ FT: 2,402

Beds: 4

Baths: 3.5

Garage: 3 Standard



ELEVATION E



ELEVATION F

ABOUT THIS PLAN

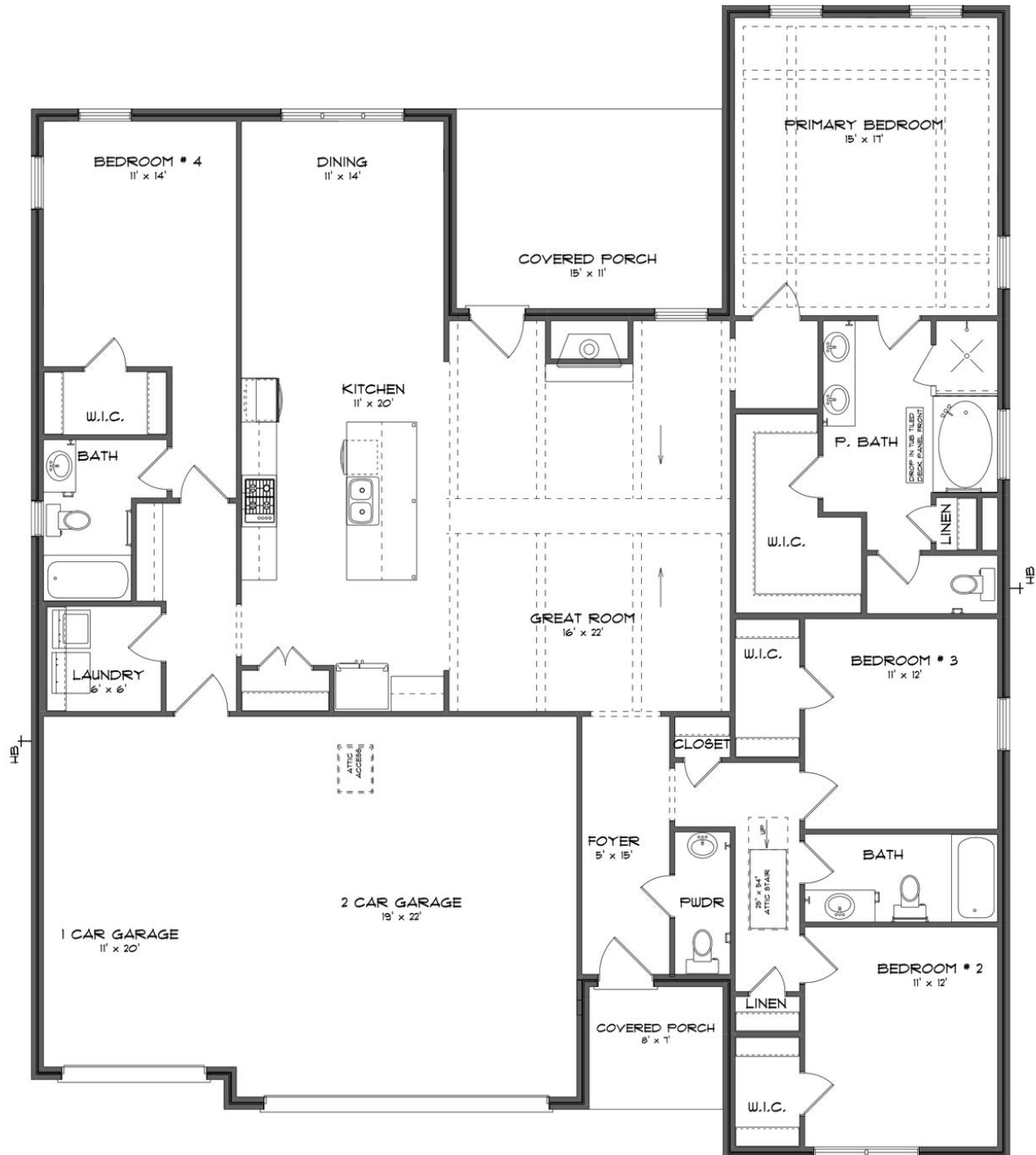
"Shackleford" is fabulously designed with 4 bedrooms and 3.5 baths created for comfortable, spacious living. The focus of the design is the great room with vaulted ceilings and a fireplace, the central hub of the home. Tucked in the back, the large primary bedroom is an assured peaceful retreat. Three additional bedrooms complete this floor plan, all with copious closet space with two full bathrooms. The rear covered patio provides ample shade and a peaceful setting. The heart of the kitchen, the granite island, provides a fantastic space for entertainment and cookery. The kitchen opens to the dining, creating a flawless space for hosting. This well laid floor plan can accommodate the space needed for a multi-generational housing because of the in-suite sleeping area for parents or children moving back home. The plan is rounded out with ample storage and a 3-car garage.

[...Read More Online](#)

Prices, plans, dimensions, features, specifications, materials, and availability of homes or communities are subject to change without notice or obligation. Illustrations are artists depictions only and may differ from completed improvements. All prices subject to change without notice. Please contact your sales associate before writing an offer.



ELEVATION E



Prices, plans, dimensions, features, specifications, materials, and availability of homes or communities are subject to change without notice or obligation. Illustrations are artists depictions only and may differ from completed improvements. All prices subject to change without notice. Please contact your sales associate before writing an offer.



**STONE MARTIN
BUILDERS**

PLAN GALLERY



Prices, plans, dimensions, features, specifications, materials, and availability of homes or communities are subject to change without notice or obligation. Illustrations are artists depictions only and may differ from completed improvements. All prices subject to change without notice. Please contact your sales associate before writing an offer.



**STONE MARTIN
BUILDERS**

PLAN GALLERY



Prices, plans, dimensions, features, specifications, materials, and availability of homes or communities are subject to change without notice or obligation. Illustrations are artists depictions only and may differ from completed improvements. All prices subject to change without notice. Please contact your sales associate before writing an offer.