



**STONE MARTIN
BUILDERS**



**Thrive Harrison
Home Plan**

Starting at \$367,899

SQ FT: 2,526

Beds: 4

Baths: 2.5

Garage: 2 Standard



Elevation A



Elevation B

ABOUT THIS PLAN

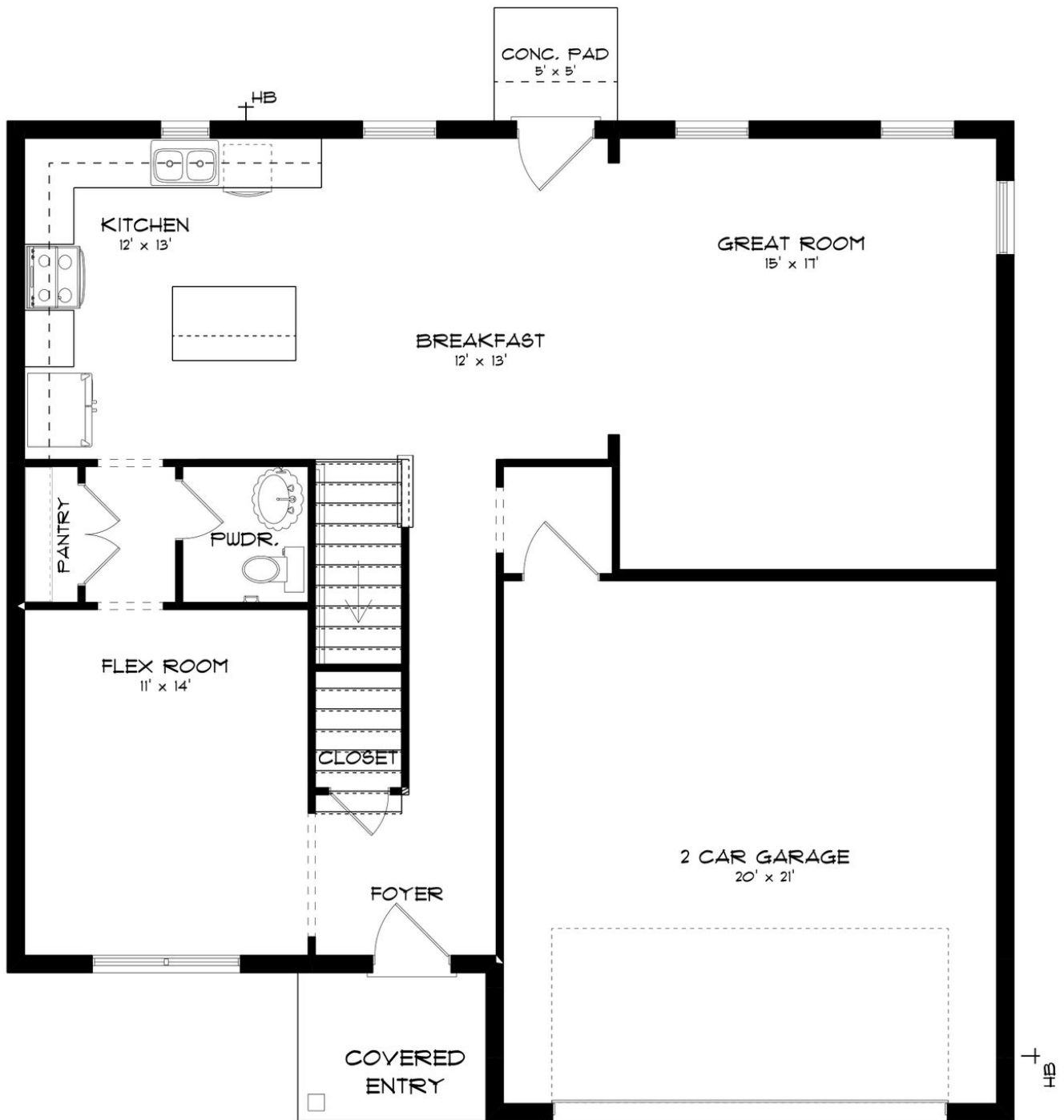
Luxury living is the name of the game with the "Harrison" plan. The covered entry opens to the large flex room and cozy entry way. Always dreamed of a home office, home gym, or even just a quiet place to relax? The flex room gives you the freedom to make those dreams a reality any way you want! This dream room connects to the open-concept kitchen, breakfast nook, and great room. This all-in-one entertainment space caters to all of your quiet weeknights or friendly weekend gatherings. Upstairs boasts 4 bedrooms and 2 bathrooms. The primary suite is complete with a double vanity and large walk-in closet.

...Read More Online

Prices, plans, dimensions, features, specifications, materials, and availability of homes or communities are subject to change without notice or obligation. Illustrations are artists depictions only and may differ from completed improvements. All prices subject to change without notice. Please contact your sales associate before writing an offer.

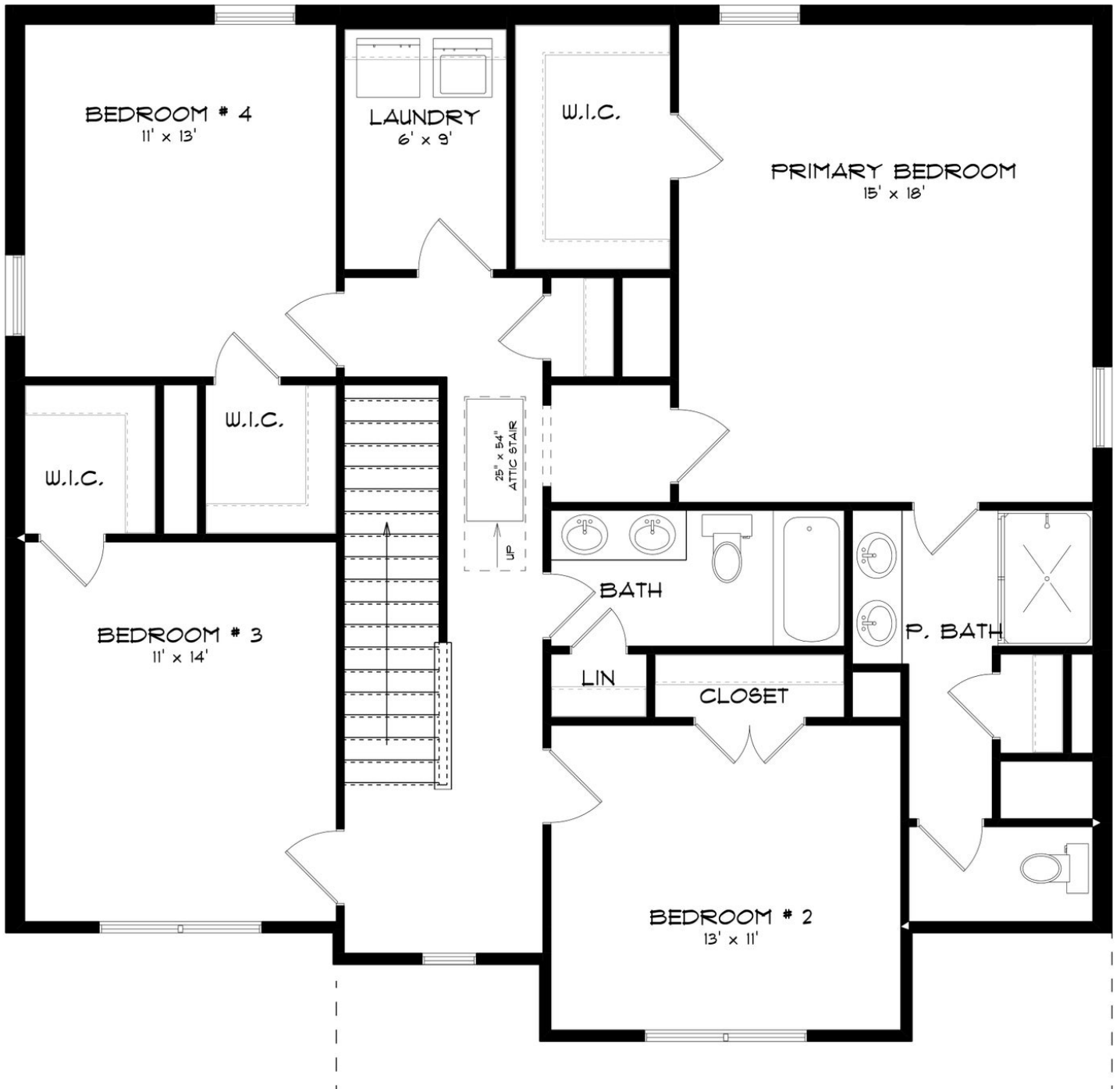


FIRST FLOOR (A)





SECOND FLOOR (A)





**STONE MARTIN
BUILDERS**

PLAN GALLERY



Prices, plans, dimensions, features, specifications, materials, and availability of homes or communities are subject to change without notice or obligation. Illustrations are artists depictions only and may differ from completed improvements. All prices subject to change without notice. Please contact your sales associate before writing an offer.



**STONE MARTIN
BUILDERS**

PLAN GALLERY



Prices, plans, dimensions, features, specifications, materials, and availability of homes or communities are subject to change without notice or obligation. Illustrations are artists depictions only and may differ from completed improvements. All prices subject to change without notice. Please contact your sales associate before writing an offer.