



**STONE MARTIN
BUILDERS**



16658 Hamilton Place

Athens, AL 36511

Swan Woods

\$472,539

Plan: Huddlestone

SQ FT: 2,503

Beds: 4

Baths: 3.5

Garage: 3

ABOUT THIS HOUSE

With 4 bedrooms and 3.5 baths huddled around the spectacular great room, "Huddlestone" offers a great plan with an exceptional use of space. The large great room area with vaulted ceilings is complete with a fireplace and opens into the spacious kitchen finished with granite countertops and a large island. Retreat to the entry or rear covered patios that offer a surplus amount of shade and a serene setting on any given day. Added to the primary bedroom and bath, the 3 additional bedrooms provide plenty of closet space and two bathrooms. This highly desirable plan is perfect for numerous ways of life, but especially for multi-generational families. The plan is rounded out exquisitely with a 3-car garage.

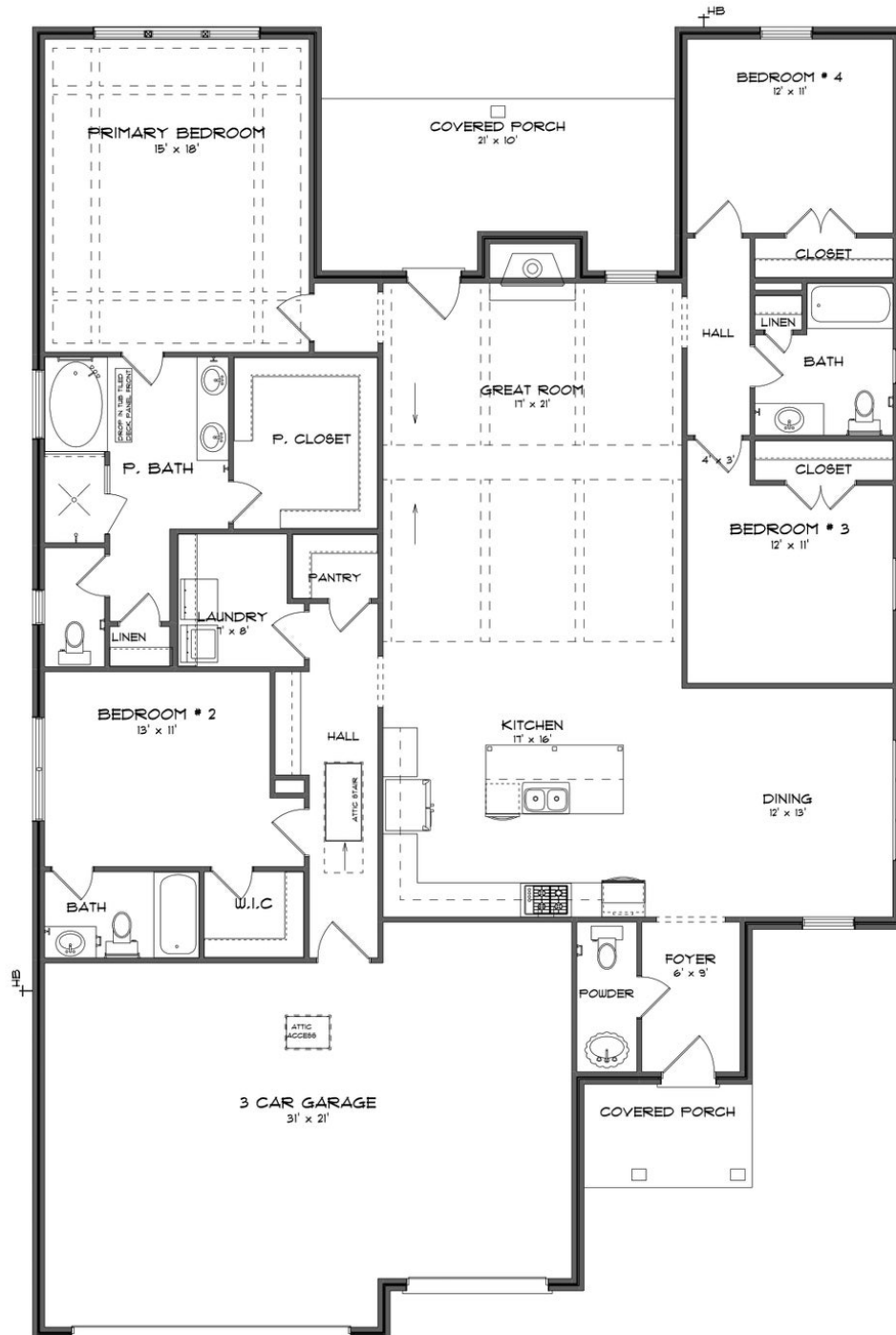
ABOUT SWAN WOODS

Welcome to Swan Woods, a captivating blend of southern charm and modern convenience in Athens, AL. Nestled off E Forrest St between Hwy 31 & Interstate 65, north of Hwy 72, this vibrant new home community by Stone Martin Builders offers convenient access to major highways and nearby amenities, ensuring an effortless lifestyle. Enjoy convenient access to retail and grocery options: Publix, Walgreens, Lowe's Home Improvement, and Walmart are all within reach. For those pining after a shopper's paradise, Huntsville's Bridge Street Town Center is approximately a 30-minute drive away. Experience the great outdoors at nearby parks and recreation areas such as Athens Sportsplex, Swan Creek Park, and Big Spring Park. Historic Downtown Athens offers an array of nightlife, dining, and cultural attractions through Athens Main Street. Discover spacious floorplans and thoughtful design details crafted to enhance your lifestyle. Gourmet kitchens, integrated smart home connectivity, and high-quality construction are hallmarks of Stone Martin Builders. Ready to experience the Stone Martin Builders difference? Schedule a visit to Swan Woods and consult with our knowledgeable Sales Professionals. Explore available homes, envision your future, and embark on the journey to find your ideal home in Limestone County, AL. Welcome home to Swan Woods—where your personalized haven awaits.

Prices, plans, dimensions, features, specifications, materials, and availability of homes or communities are subject to change without notice or obligation. Illustrations are artists depictions only and may differ from completed improvements. All prices subject to change without notice. Please contact your sales associate before writing an offer.



ELEVATION F



Prices, plans, dimensions, features, specifications, materials, and availability of homes or communities are subject to change without notice or obligation. Illustrations are artists depictions only and may differ from completed improvements. All prices subject to change without notice. Please contact your sales associate before writing an offer.