



**STONE MARTIN
BUILDERS**



16632 Hamilton Place

Athens, AL 35611

Swan Woods

\$494,194

Plan: Bellemeade

SQ FT: 2,707

Beds: 4

Baths: 3.5

Garage: 2

ABOUT THIS HOUSE

One of our most unique floorplans, the "Bellemeade" features 4 bedrooms and 3.5 bathrooms with optimized living space. When entering through the covered porch, you are immediately met with an elegant study off the foyer. The foyer leads into the abundant kitchen and great room. The great room boasts vaulted ceilings and a center fireplace for all those cozy family gatherings. The kitchen features a grand island with plenty of sitting space and a large pantry. The primary suite has a roomy design, and the primary bath is equipped with double granite vanities, garden/soaking tub, separate tiled shower with a glass door and a spacious walk-in closet. The home is complete with 3 additional bedrooms and 2 bathrooms.

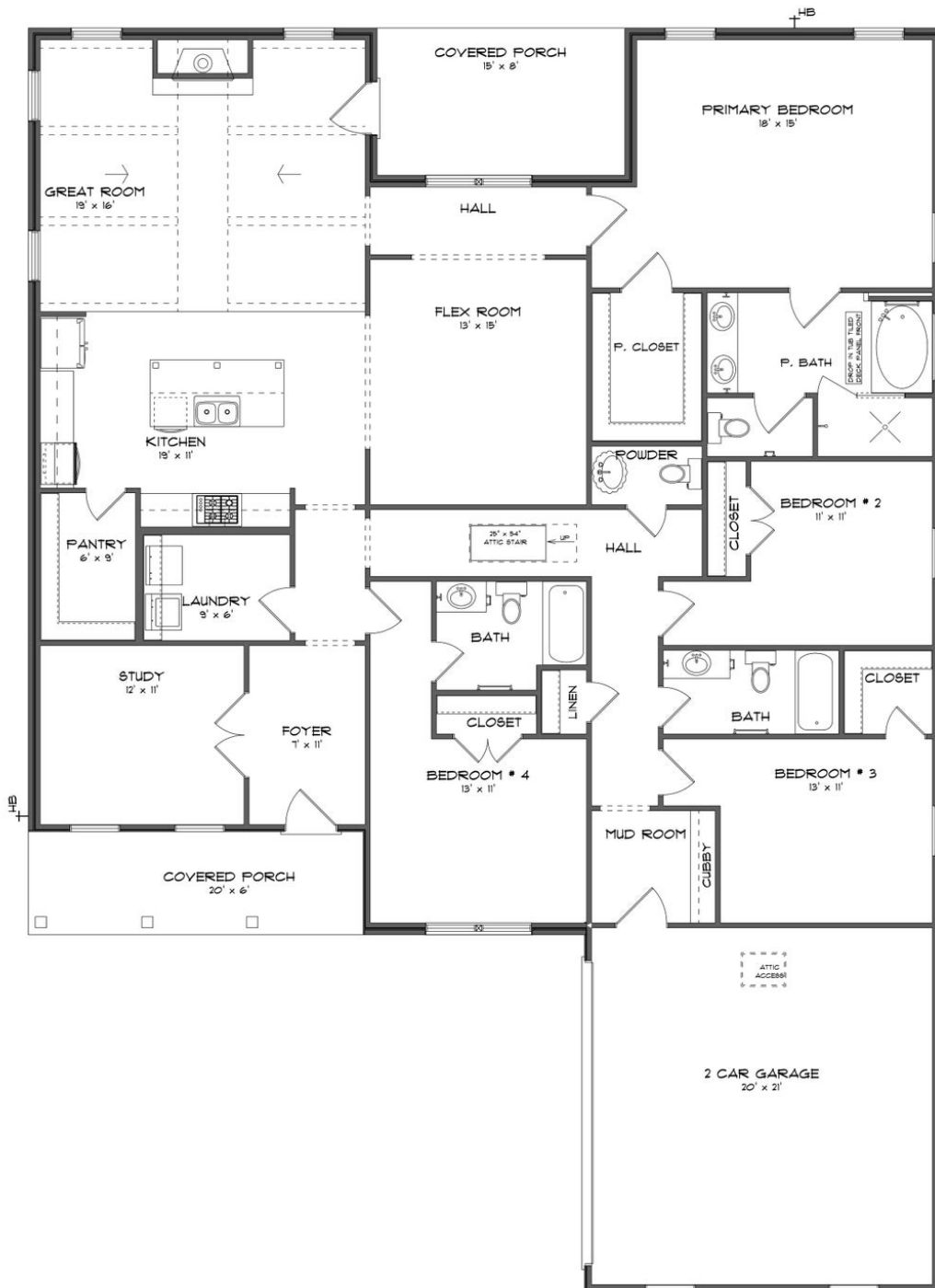
ABOUT SWAN WOODS

Stone Martin Builders wants to help you get into the game of homeownership! Ask a Sales Professional about our special incentives and new home savings! Welcome to Swan Woods, a captivating blend of southern charm and modern convenience in Athens, AL. Nestled off E Forrest St between Hwy 31 & Interstate 65, north of Hwy 72, this vibrant new home community by Stone Martin Builders offers convenient access to major highways and nearby amenities, ensuring an effortless lifestyle. Enjoy convenient access to retail and grocery options: Publix, Walgreens, Lowe's Home Improvement, and Walmart are all within reach. For those pining after a shopper's paradise, Huntsville's Bridge Street Town Center is approximately a 30-minute drive away. Experience the great outdoors at nearby parks and recreation areas such as Athens Sportsplex, Swan Creek Park, and Big Spring Park. Historic Downtown Athens offers an array of nightlife, dining, and cultural attractions through Athens Main Street. Discover spacious floorplans and thoughtful design details crafted to enhance your lifestyle. Gourmet kitchens, integrated smart home connectivity, and high-quality construction are hallmarks of Stone Martin Builders. Ready to experience the Stone Martin Builders difference? Schedule a visit to Swan Woods and consult with our knowledgeable Sales Professionals. Explore available homes, envision your future, and embark on the journey to find your ideal home in Limestone County, AL. Welcome home to Swan Woods...

Prices, plans, dimensions, features, specifications, materials, and availability of homes or communities are subject to change without notice or obligation. Illustrations are artists depictions only and may differ from completed improvements. All prices subject to change without notice. Please contact your sales associate before writing an offer.



ELEVATION G



Prices, plans, dimensions, features, specifications, materials, and availability of homes or communities are subject to change without notice or obligation. Illustrations are artists depictions only and may differ from completed improvements. All prices subject to change without notice. Please contact your sales associate before writing an offer.